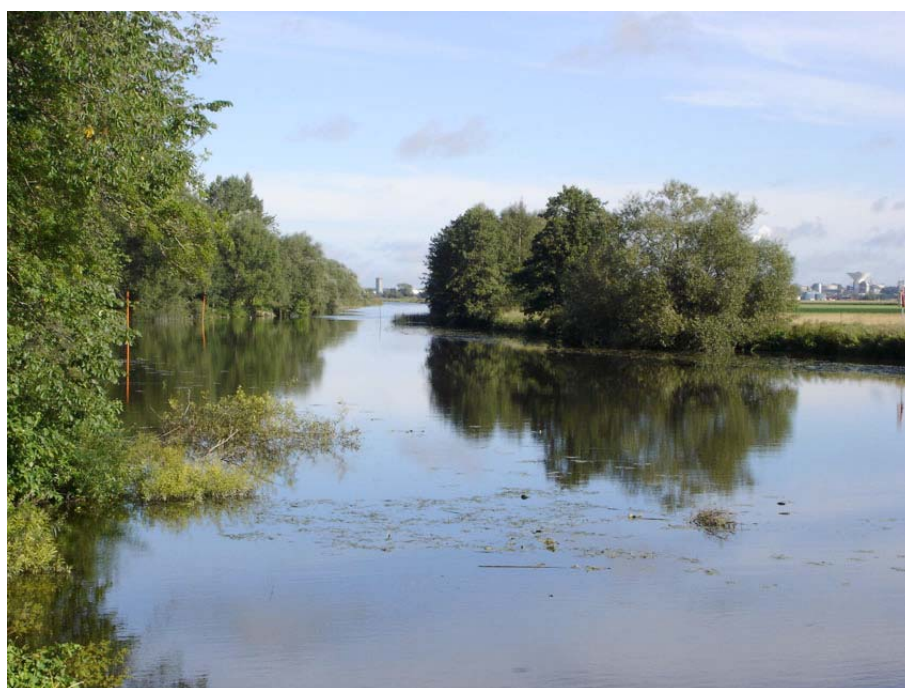


## The FYRIS model Version 2.0

– A tool for catchment-scale modelling of source apportioned gross and net transport of nitrogen and phosphorus

### A user's manual



by

Klas Hansson, Mats Wallin & Georg Lindgren

Department of Environmental Assessment  
Swedish University of Agricultural Sciences  
Box 7050 SE 750 07 Uppsala

---



# The FYRIS model Version 2.0

– A tool for catchment-scale modelling of source apportioned  
gross and net transport of nitrogen and phosphorus

## A user's manual

by

Klas Hansson, Mats Wallin and Georg Lindgren

ISSN 1403-977X

# Contents

<b>1</b>	<b>MODEL HISTORY</b>	<b>3</b>
<b>2</b>	<b>MODEL DESCRIPTION</b>	<b>3</b>
<b>3</b>	<b>USE OF OTHER MODELS TO CALCULATE INPUT DATA</b>	<b>4</b>
<b>4</b>	<b>INPUT DATA FILE</b>	<b>4</b>
4.1	CATCHMENT	4
4.2	MAJOR POINT SOURCES	6
4.3	MINOR POINT SOURCES	6
4.4	TYPE SPEC CONC	7
4.5	TEMPERATURE	7
4.6	COBS	8
4.7	SPECIFIC RUNOFF	8
4.8	STORAGE	9
<b>5</b>	<b>OUTPUT DATA</b>	<b>9</b>
5.1	RESULTS.XML	9
5.2	MONTECARLO.OUT	9
<b>6</b>	<b>INTRODUCTION TO THE VARIOUS WINDOWS OF THE MODEL</b>	<b>10</b>
6.1	THE PROJECT MANAGER	10
6.2	WORKSPACE PANEL	10
6.3	PROJECTS PANEL	10
6.4	THE GENERAL TAB	11
6.5	THE DATA TAB	12
6.6	THE Q-DATA TAB	12
6.7	THE CALIBRATION TAB	13
6.8	THE SCENARIO TAB	14
6.9	THE RESULT TAB	14
6.9.1	<i>Internal load</i>	15
6.9.2	<i>Sources</i>	15
6.9.3	<i>Apportionment</i>	15
6.9.4	<i>Catch contr</i>	15
6.9.5	<i>The Catchment listbox</i>	15
6.9.6	<i>Other features</i>	15
<b>7</b>	<b>SPECIAL FEATURES</b>	<b>16</b>
7.1	REMOVAL OF EMPTY ROWS IN THE INPUT DATA TABLES	16
7.2	COLUMN MODE SWITCH	16
<b>8</b>	<b>HOW TO START USING THE FYRIS MODEL</b>	<b>16</b>
8.1	SYSTEM REQUIREMENTS	16
8.2	INSTALLING THE PROGRAM ON YOUR COMPUTER	17
8.3	IMPORT DATA	17
8.4	CALIBRATION	17
8.5	SCENARIOS	17
<b>9</b>	<b>REFERENCES</b>	<b>18</b>

# 1 Model history

The dynamic Fyris model was originally developed by Hans Kvarnäs at the Dept. of Environmental Assessment at SLU<sup>1</sup> for calculating source apportioned nitrogen and phosphorus transport in the River Fyris catchment in central Sweden (Kvarnäs 1996). After this first application the model has been further developed in applications for the Lake Vättern catchment (Kvarnäs 1997), the Lake Storsjön catchment (Johansson & Kvarnäs 1998), catchments of coastal areas in Lake Vänern (Wallin et al. 2000) and the River Göta catchment (Sonesten et al. 2004). During 2005-2006 the platform for the Fyris model has been changed from LabView (<http://www.ni.com/labview>) to Visual Studio and .Net Framework (<http://msdn.microsoft.com/netframework>). This user manual describes the new version of the model released in September 2006.

# 2 Model description

The dynamic Fyris model calculates source apportioned gross and net transport of nitrogen and phosphorus in rivers and lakes. The main scope of the model is to assess the effects of different nutrient reduction measures on the catchment scale. The time step for the model is one month and the spatial resolution is on the sub-catchment level. Retention, i.e. losses of nutrients in rivers and lakes through sedimentation, up-take by plants and denitrification, is calculated as a function of water temperature, nutrients concentrations, water flow, lake surface area and stream surface area. The model is calibrated against time series of measured nitrogen or phosphorus concentrations by adjusting two parameters.

Data used for calibrating and running the model can be divided into time dependent data, e.g. time-series on observed nitrogen and phosphorus concentration, water temperature, runoff and point source discharges, and time independent data, e.g. land-use information, lake area and stream length and width (see Fig. 1).

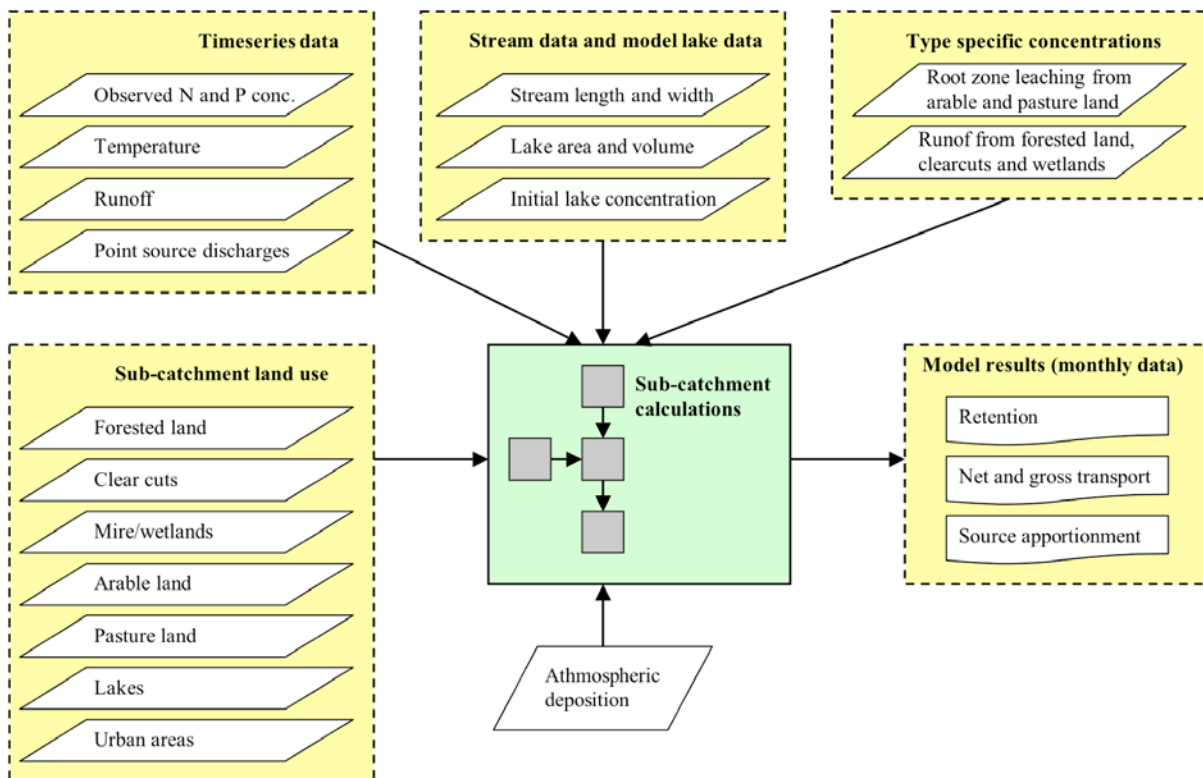


Figure 1. The general structure of inputs and outputs to the Fyris model.

<sup>1</sup> SLU = Swedish University of Agricultural Sciences

### 3 Use of other models to calculate input data

The dynamic SOILNDB model (Johnsson 2002) is used for calculating type-specific concentration of nitrogen in leaching from agricultural land. For calculating the type-specific concentration of phosphorus in run off from agricultural land a regression model has been used until now (Ulén et al. 2001). This model will, however, be replaced by the dynamic ICECREAM model (Larsson et al. 2003). Type-specific concentration of a given nutrient (N,P) is an annual average concentration normalized for climatic conditions and typical for a combination of crop and soil type. For calculating the type-specific concentration of nitrogen and phosphorus in run off from forested areas a regression model is used (Löfgren & Westling 2002). For calculating runoff and water discharge the HBV model (Bergström 1995) or the Q model (Kvarnäs 2000) is used.

### 4 Input data file

In order to perform simulations with the Fyris model, one Excel-file containing all input data is required. Any suitable name may be chosen for the Excel file and it must have the .xls extension. The Excel data file contains eight different worksheets (Fig. 2). Worksheets that are not needed in your project (eg. Storage if no model lakes with storage are included) can be left blank. They may, however, not be deleted. The order of the worksheets in the workbook is of no importance, however, the names and content of each worksheet must obey the guidelines in this manual. **Make sure the name of the worksheet is spelled according to Fig. 2, and that the upper/lower case is correct!**

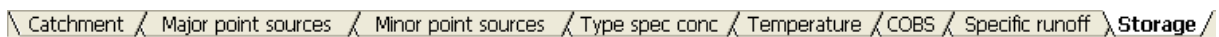


Figure 2. The worksheets required in the Excel workbook.

An example of the excel input data file is provided with the program (Demo\_Input\_Nitrogen.xls).

#### 4.1 Catchment

This worksheet contains time independent data on the different sub-catchments that is needed for the quantification of the nutrient transport. This includes information on hydrological network of sub-catchments and sub-catchment specific data on land-use, deposition, type-specific concentration in runoff from arable land and pasture and data on included model lakes.

	A	B	C	D	E	F
1	CatchmentID	StationID	DownstreamID	Area (km2)	LakeArea (km2)	StreamLength (m)
2	1348	108004	1360	46.507	0	16892
3	1360	108004	1367	24.185	0.007	16783
4	1364	108004	1360	20.853	0	8506
5	1367	108004	1397	125.419	20.933	26148
6	1377	108003	1391	46.887	0.844	16529
7	1383	108003	1389	69.316	1.084	34153
8	1386	108005	1412	69.856	1.086	35019
9	1389	108003	1391	4.672	0	3392
10	1391	108003	1386	10.473	0	4136
11	1393	108003	1383	37.246	0	9436
12	1394	108003	1389	48.064	0.253	21290
13	1397	108004	1407	15.453	0.923	5535
14	1402	108005	1412	5.55	0.812	3043
15	1403	108003	1383	7.229	0	5001

Figure 3. The first rows and columns of an example Catchment worksheet. **Given that the Fyris model uses decimal point and not decimal comma, make sure that your input data is provided using decimal point!**

The position for each column must not be changed. The variable name in the header row can, however, be changed (possible to include translation of variable and more detailed description). The variable names, units and description of the variables are given in Table 1.

Table 1. The variables included in the Catchment worksheet.

Variable name	Unit	Description
Catchment ID	-	Sub-catchment ID
Station ID	-	The ID-number of the nearest downstream flow measuring station.
Downstream ID	-	Downstream sub-catchment
Area	km <sup>2</sup>	Total area of sub-catchment
Lake Area	km <sup>2</sup>	Lake area
Stream Length	m	Stream length
Stream Area	km <sup>2</sup>	Stream area
Mountain	km <sup>2</sup>	Mountain area – above tree line
Forest	km <sup>2</sup>	Forested area
Clearcuts	km <sup>2</sup>	Clear cuts (not older than 5 years)
Mire	km <sup>2</sup>	Mire/Wetland
Arable	km <sup>2</sup>	Arable land
Pasture	km <sup>2</sup>	Pasture
Open	km <sup>2</sup>	Other open land
Settlements	km <sup>2</sup>	Settlements
Urban	km <sup>2</sup>	Urban areas.
cArable	mg/l	Type specific concentration from arable land
cPasture	mg/l	Type specific concentration from pasture
Altitude*	m	Altitude above sea level
Lake Model	-	1 = Yes, 0 = No
Dep Lake	kg/month/km <sup>2</sup>	Nitrogen deposition on lakes (zero for P)
Dep Clearcut	kg/month/km <sup>2</sup>	Nitrogen deposition on clearcuts (zero for P)
Model Lake Name*	-	
Model Lake Area	km <sup>2</sup>	Model lake area
Model Lake Depth*	m	Model lake mean depth
Model Lake Volume	m <sup>3</sup> ·10 <sup>6</sup>	Model lake volume
Initial Lake Concentration	kg/m <sup>3</sup>	Initial concentration for model lakes

\* Parameter currently not in use in the model.

The outflow ID in the *Catchment* worksheet contains information on how the sub-catchments are connected to each other. If, for instance, sub-catchment 1360 is immediately downstream of sub-catchment 1348, 1360 should be typed into column C (Downstream ID column) on the row containing the sub-catchment 1348 information (see example in Fig. 5). **The outlet area for the whole model catchment should have the downstream ID -1.**

Large lakes with water turnover time significantly higher than the time step of the model (1 month) may be included as “Model lakes” in the *Catchment* worksheet (Tab. 1). For these lakes additional information is needed (area, volume and initial concentration). The “Model lakes” are assumed to be situated close to the outlet of the sub-catchment and, hence, receive the total load from sources in the sub-catchment. Furthermore, there can only be one “Model lake” per sub-catchment. Information on water storage in “Model lakes” is inserted in a separate worksheet (see section 4.8).

## 4.2 Major point sources

This worksheet contains data from large point sources such as wastewater treatment plants. The data should be organized according to Fig. 4, i.e. the first row should contain headings for every column. It is of no importance what is actually written, just make sure to write something on line one, and start providing data on row two. Column A should contain the catchment ID, column B the name of the facility, column C the year for which the data applies, column D the month during which the measurement was taken, and column E the average load per month ( $\text{kg month}^{-1}$ ). There can be more than one facility in a certain catchment area. The data for the different facilities are inserted below each other. Catchments that have no major point sources do not need to be included.

	A	B	C	D	E
1	Catchment ID	Facility	Year	Month	Load ( $\text{kg/month}$ )
2	1345	Odensberg WWTP	1985	1	85.0
3	1345	Odensberg WWTP	1985	2	85.0
4	1345	Odensberg WWTP	1985	3	85.0
5	1345	Odensberg WWTP	1985	4	85.0
6	1345	Odensberg WWTP	1985	5	85.0
7	1345	Odensberg WWTP	1985	6	85.0
8	1345	Odensberg WWTP	1985	7	85.0
9	1345	Odensberg WWTP	1985	8	85.0
10	1345	Odensberg WWTP	1985	9	85.0
11	1345	Odensberg WWTP	1985	10	85.0
12	1345	Odensberg WWTP	1985	11	85.0

Figure 4. The first rows and columns of the Major point sources-worksheet.

## 4.3 Minor point sources

This worksheet contain data from small point sources such as scattered households with autonomous sewage treatment system. The data should be organized according to Fig 5, i.e. the first row should contain headings for every column. It is of no importance what is actually written, just make sure to write something on line one, and start providing data on row two. Column A should contain the catchment ID, column B the average load per month ( $\text{kg month}^{-1}$ ) from households. In column C and D you have the possibility to insert data on other minor point sources that should be included in the source apportionment calculations. Catchments that have no minor point sources do not need to be included.

	A	B	C	D
1	Catchment ID	Households ( $\text{kg/month}$ )	Minor 1 ( $\text{kg/month}$ )	Minor 2 ( $\text{kg/month}$ )
2	1294	110,3867737	0,046204246	0
3	1296	252,2667719	0,723877917	0
4	1345	73,67992739	0,748590018	0
5	1349	124,5599456	0,7269034	0
6	1350	106,9086241	1,666461214	0
7	1353	2,7119232	0,006597705	0
8	1355	61,99391992	0,52961518	0
9	1356	38,97840651	0,694976892	0
10	1366	257,0452852	4,199935315	0
11	1369	14,78409219	0,058121182	0
12	1374	52,56162332	0,716168934	0
13	1378	44,58014247	0,690591901	0
14	1381	56,9270021	1,065043942	0
15	1388	104,3359858	1,122093914	0
16	1406	76,9488372	0,902165702	0

Figure 5. The first rows and columns of the Minor point sources-worksheet.



#### 4.4 Type spec conc

This worksheet includes type-specific concentrations (mg/l) in runoff from different land use. Type-specific concentrations in runoff from arable land and pasture are, however, given in the *Catchment* worksheet thus allowing different concentrations to be used for different sub-catchments. The values in the *Type spec conc* worksheet depend on the season so there should be one value for each month of the year (12 rows). The land use classes are from left: mountain areas (above tree line), forests, clear cuts, mire/wetlands, open land, settlements and urban areas (Fig. 6). The default values are values used for the most recent model applications in the southern part of Sweden. **Make sure to include a header row since data is imported from the second row down.**

	A	B	C	D	E	F
1	Mountain	Forest	Clear cuts	Mires	Other	Urban
2	0.19	0.6	1.26	1.2	0.41	1.18
3	0.32	0.6	1.26	1.2	0.41	1.18
4	0.32	0.6	1.3	1.2	0.43	1.18
5	0.32	0.6	1.3	1.2	0.43	1.18
6	0.22	0.6	1.3	1.2	0.43	1.18
7	0.22	0.6	1.4	1.2	0.47	1.18
8	0.22	0.6	1.4	1.2	0.47	1.18
9	0.18	0.6	1.4	1.2	0.47	1.18
10	0.18	0.6	1.38	1.2	0.47	1.18
11	0.18	0.6	1.38	1.2	0.47	1.18
12	0.19	0.6	1.38	1.2	0.47	1.18
13	0.19	0.6	1.26	1.2	0.41	1.18

Figure 6. Type specific nutrient concentrations (mg/l) in the runoff from different land uses.

#### 4.5 Temperature

This worksheet includes data on measured water temperature. If these data are not available from the modelled catchment data on measured air temperature (monthly mean) is an acceptable approximation of water temperature. The columns from left in the temperature worksheet are: Year; Month (1-12); Number of days per month (28-31); and Temperature (°C) (Fig. 7). These data are used for all sub-catchments in the model and you have to fill in a row for each time step of the model. This means that if the model includes data for 5 years (60 months) you have to fill in 60 rows. **Make sure to include a header row since data is imported from the second row down.**

	A	B	C	D
1	Year	Month	Days of month	Temperature
2	1985	1	31	0.3
3	1985	2	28	1.2
4	1985	3	31	0.5
5	1985	4	30	1.6
6	1985	5	31	13.3
7	1985	6	30	15.4

Figure 7. A snapshot from a typical Temperature worksheet.

#### 4.6 COBS

The worksheet named COBS contains data on measured nutrient (total nitrogen and total phosphorous) concentrations. Note that only one nutrient at the time can be calculated for in the model. Data is provided once a month in mg l<sup>-1</sup>, and the model only allows for one measurement site per sub-catchment. The first row in this worksheet should contain headings (Fig. 8). From column C, and further to the right, the sub-catchment ID corresponding to the measurement station should be provided. Only include the sub-catchments for which there are measured values. If values are missing for a certain month, type -99 in the cell. This informs the model that there is a missing value for that month and sub-catchment. **Note that missing data may only be assigned the value -99 in this worksheet! In the other worksheets, -99 will be interpreted as data with value -99.**

	A	B	C	D	E	F	G
1	Year	Month	1367	1377	1386	1389	1394
2	1985	1	-99	-99	-99	-99	-99
3	1985	2	-99	-99	-99	-99	-99
4	1985	3	-99	-99	-99	-99	-99
5	1985	4	-99	1.16	1.71	3.09	1.71
6	1985	5	-99	-99	-99	-99	-99
7	1985	6	-99	-99	-99	-99	-99
8	1985	7	-99	1.32	0.93	0.85	0.89
9	1985	8	-99	-99	-99	-99	-99
10	1985	9	-99	-99	-99	-99	-99
11	1985	10	-99	2.04	1.02	0.94	1.04
12	1985	11	-99	-99	-99	-99	-99
13	1985	12	-99	-99	-99	-99	-99

Figure 8. A typical COBS worksheet containing measured (and missing) concentration values of the studied nutrient.

#### 4.7 Specific runoff

This worksheet contains information on the area-specific runoff in each sub-catchment (mm/month). The first row contains headings, and Q-station numbers (ID), while the following rows contain the actual data (Fig. 9).

	A	B	C	D	E	F	G
1	Year	Month	Days of month	108003	108004	108005	108007
2	1985	1	31	16.25	15.88	16.94	17.44
3	1985	2	28	8.3	10.2	10.7	15.34
4	1985	3	31	37.9	55.61	51.96	61.17
5	1985	4	30	131.85	108.3	105.06	101.96
6	1985	5	31	33.11	23.78	25.84	23.83
7	1985	6	30	19.85	15.4	16.84	15.96
8	1985	7	31	16.86	11.94	14.19	13.51
9	1985	8	31	21.98	18.95	19.59	29.2
10	1985	9	30	40.66	41.78	41.17	70.27
11	1985	10	31	37.57	35.53	36.15	44.8
12	1985	11	30	39.43	37.69	37.87	41.01
13	1985	12	31	128.99	129.99	127.87	149.02
14	1986	1	31	46.06	49.17	53.14	61.39
15	1986	2	28	17.43	17.62	18.97	19.82
16	1986	3	31	109.41	111.77	109.01	124.17

Figure 9. The Specific runoff worksheet.

## 4.8 Storage

This worksheet contains changes in water storage ( $\text{m}^3 \cdot 10^6$ ) in lakes and dams included as “Model lakes” in the model (see *Catchment* worksheet in section 4.1). If a modelled lake is judged not to have any significant changes in storage you fill in zeros (0) for this lake. The number of columns equals the number of lakes and dams in the model and the number of rows equals the number of months. Include a header row, where the column headers are the catchment IDs of the sub-catchment the model lake belongs to. The catchment IDs should increase from left to right. In the example in Fig. 10, there are two model lakes – one in sub-catchment 1367 and one in 1407. Only the lake in 1407 have significant changes in storage over the year (Fig. 10). Every row represents one month. If there are no “Model lakes” included in the model you can leave the worksheet blank.

	A	B
1	1367	1407
2	0	-23.37
3	0	-10.97
4	0	26.13
5	0	29.33
6	0	-33.97
7	0	-9.27
8	0	-5.87
9	0	2.83
10	0	10.53

Figure 10. The Storage worksheet.

## 5 Output data

The program produces two major output files: *montecarlo.out*, and *results.xml*. *montecarlo.out* contains information regarding the Monte Carlo simulation of the project, provided such a simulation has been performed, while *results.xml* contain all other results.

### 5.1 Results.xml

The content of this file can be viewed in the graphical user interface of the Fyris model (see chapter 6 of this manual), but may also be opened in external programs for data analysis. It is recommended that the user saves the file using the save file button in the Results tab window to obtain an ASCII file named *Results.out*. This file can be opened in Excel and contains the information included in the Result tab described in section 6.3

### 5.2 montecarlo.out

The content of the *montecarlo.out* ASCII file is organized in columns:

Column 1	2	3	4	5
$c_0$ empirical calibration parameter for temperature dependency	$c_T (= 20 \text{ }^\circ\text{C})$ upper limit in $^\circ\text{C}$ for temperature dependency	$kvs$ empirical calibration parameter for sedimentation loss rate	$E$ model efficiency according to Nash & Sutcliffe (1970)	$r$ the correlation coefficient

A more detailed description of the parameters above is given in the technical description of the Fyris model (Hansson et al. 2006).

## 6 Introduction to the various windows of the model

### 6.1 The project manager

The project manager is where you organize the work you carry out using the Fyris model. The project manager comprises two parts, the workspace panel and the projects panel (Fig. 11). The workspace is essentially a directory on your computer (found under the Fyris model directory) that contains a number of projects. A possible way of organizing your work is to give the workspace the same name as the catchment you currently study, and then store all simulations related to that catchment as projects in that workspace. If you click any workspace in the list, the projects belonging to it will show up.

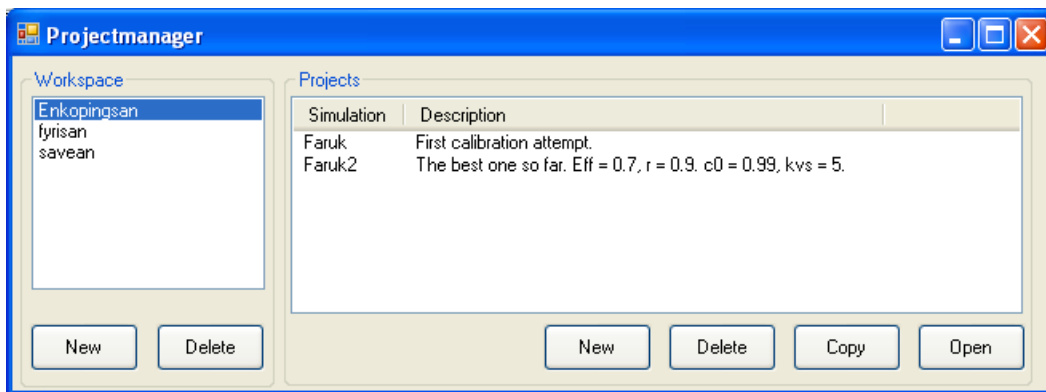


Figure 11. The project manager.

### 6.2 Workspace panel

The “New” button allows the user to create a new workspace, and the delete button allows the user to delete a workspace – but ONLY if it is empty. Thus, the user must delete all projects within the workspace first and then delete the workspace itself. This is to reduce the risk of unwanted deletions of work.

### 6.3 Projects panel

- The *New* button creates a new project by prompting the user to import an input data file (see chapter 4). The user should browse to the desired Excel file and open it. The data in the Excel file will now be imported if the contents fulfil the requirements on it.
- The *Delete* button is used to delete a project. Only one project at a time can be deleted.
- The *Copy* button is used to copy an entire project to a new project to which the user will be prompted to provide a name. All settings and results of the old project will be copied to the new one.
- The *Open* button opens the selected project. The same action will be taken by double-clicking a project in the list.

## 6.4 The General tab

The general tab provides the user with some significant numbers concerning the project at hand (Fig. 12). These numbers can be used for a quick check that data was loaded properly. You can also store comments about your project in the large textbox. The first lines of information contained herein will be visible in the project manager.

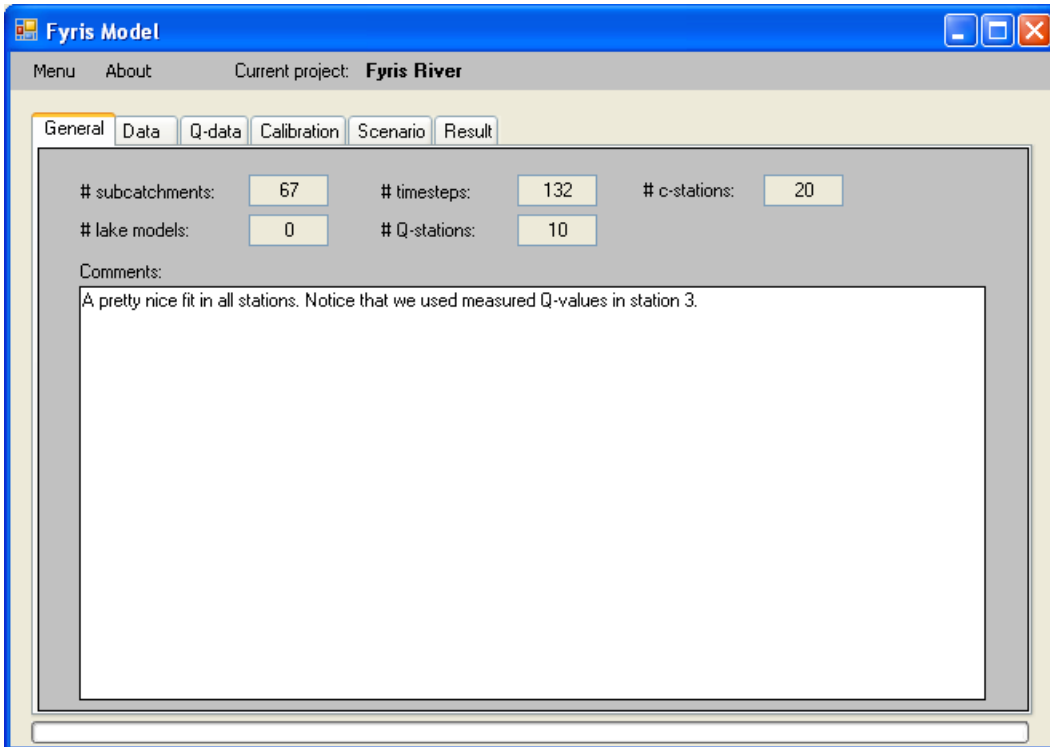


Figure 12. The “General tab” is the first thing the user sees of the actual model. It contains general information of the projects such as number of sub-catchments and number of measurement stations.

## 6.5 The Data tab

Under the data tab one can find data tables corresponding to the worksheets of the input data Excel file (Fig. 13) by clicking corresponding button on the left. These data tables are useful for checking that the import of data worked well.

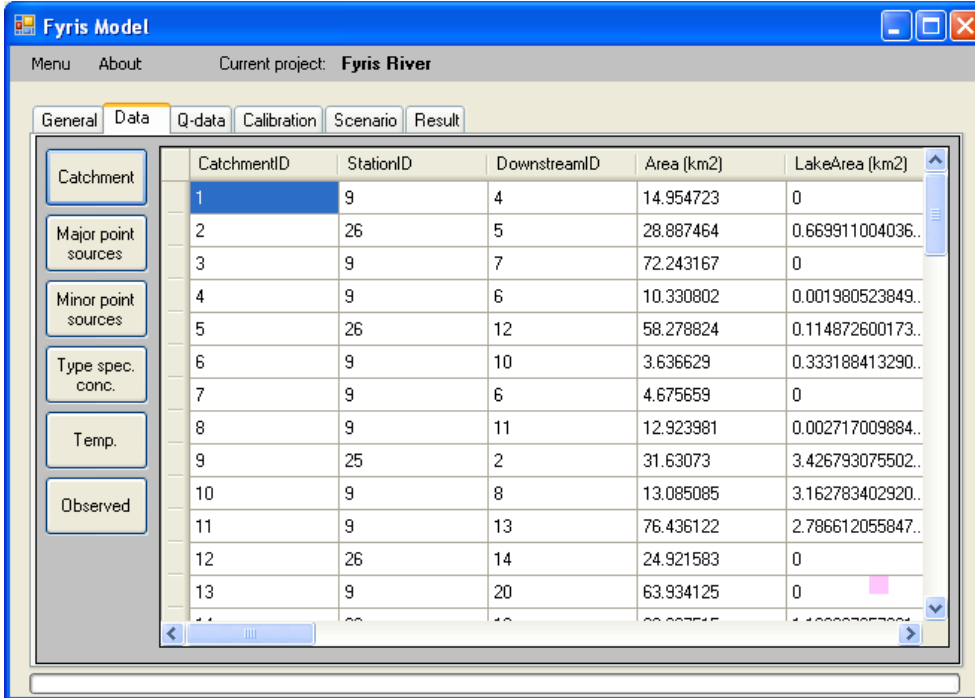


Figure 13. The “Data tab” is useful for browsing the input data tables making sure that all information was imported correctly.

## 6.6 The Q-data tab

The data under the Q-data tab shows the area specific runoff and storage from the input data Excel file (Fig. 14).

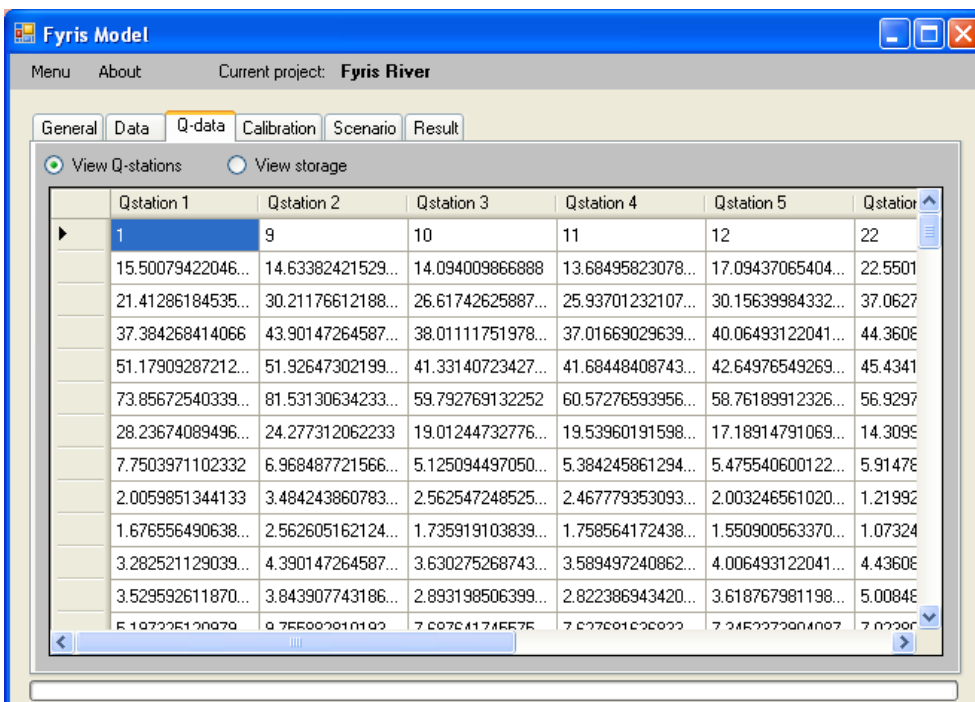


Figure 14. The Q-data tab contains input data regarding runoff and storage.

## 6.7 The Calibration tab

This is where you will probably spend most of your time. The basic idea of this tab window is to provide means of calibrating your model, and evaluate how sensitive a goodness-of-fit value is to changes in parameter values (see section 8.2). Both manual calibration and Monte Carlo simulations may be used to find out the optimum set of parameter values.

Calibration may be carried out by means of manual calibration, where the user manually changes the value of the calibration parameters  $c_0$  and  $kvs$  between simulations. The first step is to chose *Manual calibration* from the list in the upper right corner. Then insert values on  $c_0$  and  $kvs$  and click on the *Settings* button to chose time period (months) for the calibration. All stations included in the *COBS* worksheet will be included in the calibration. If you want to use some of the stations for calibration and some for validation you must use two different *COBS* worksheets – one containing the selected calibration stations and one containing the selected validation stations. To run the calibration you click on the *Run* button in the lower right corner.

The agreement between the modelled and measured data is evaluated using the model efficiency ( $Eff$ ) (Nash and Sutcliffe, 1970), and the correlation coefficient ( $r$ ). After a manual simulation, the user can look at time series plots on modelled data (solid line) and measured data (dots) for every sub-catchment where measured data exist (Fig. 15). First click on the *Plot* button. Then change station by using the  $<$  or  $>$  button. It is also possible to make a plot of simulated values versus measured values.

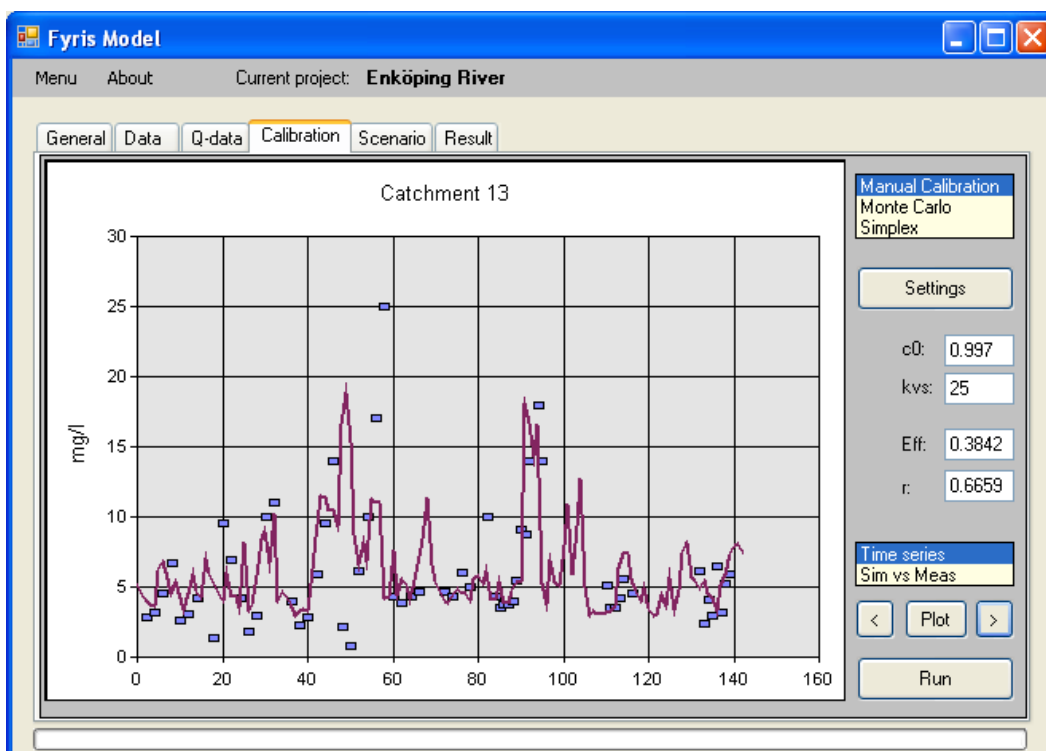


Figure 15. The plot shows a time series simulation of nitrogen concentration in catchment 13. Parameter values are displayed to the right, as well as the statistical measures used in the Fyris model.

Parameter influence can be analysed by means of Monte Carlo simulations where parameter values are generated randomly according to a user specified uniform distribution. The results can then be visualised through scatter plots (Fig. 16). The scatter plots reveal if any parameter is redundant, and will also give information about what parameter values will give the best fit to the measured data. The parameter values ( $c_0$  and  $kvs$ ) giving the best fit to measured data generated with Monte Carlo simulations are in the next step used to run the model using manual calibration.

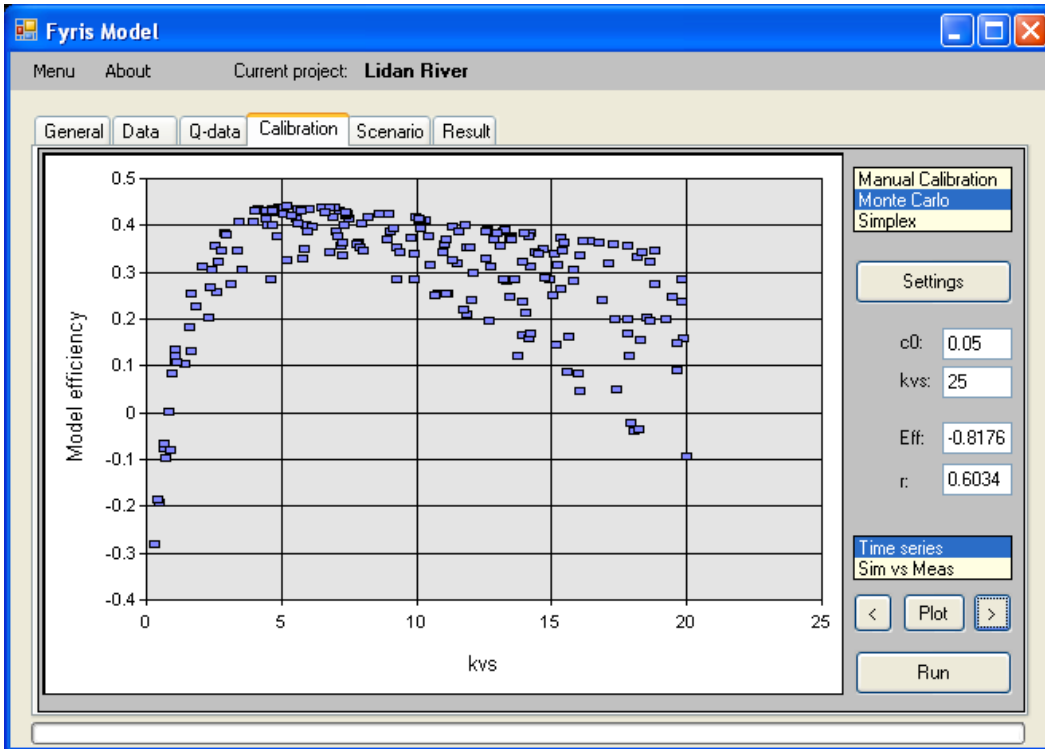


Figure 16. The plot shows an example Monte Carlo simulation consisting of 200 individual simulations. Every single simulation is plotted as a dot where the model efficiency is a function of the value of the calibration parameter  $kvs$ .

## 6.8 The Scenario tab

This tab is currently not in use.

## 6.9 The Result tab

Catchment ID	Mean retention parameter	Contribution at source (kg)	Final contribution (kg)	Fraction
14	0.217612693060584	92460.2825260734	72339.75144443...	0.782387306939...
13	0.279204974643416	1321589.43607142	745298.30791699	0.563940878744...
12	0.056571726357719	43877.4573214976	23344.46453211...	0.532037769669...
7	0.0588741886814108	137472.427222555	68834.43458563...	0.500714477632...
11	0.10380540667998	23150.5339983313	11038.39159156...	0.476809372620...
3	0.140567160493797	121875.471702157	52446.72844547...	0.430330465293...
4	0.236992218932174	55705.7508716527	21282.32878376...	0.382049042527...
6	0.0745117500558099	178602.566022595	82765.38740943...	0.463405365625...
10	0.0871374876105672	135812.096044532	59113.76330857...	0.435261401820...
1	0.330790050601708	2268.21764603333	653.2045587693...	0.287981428903...
2	0.66424116940349	747.749607216107	108.0402872744...	0.144487253797...
5	0.247959349401749	38307.965386294	13350.31339724...	0.348499672656...
9	0.167354816779799	81124.3301549923	29400.94260770...	0.362418309667...

Figure 17. The "Result tab" provides the means to display output data as well as ways to e.g. perform source apportionment.



The Result tab lets you look at the entire results file in itself, sorted according to sub-catchment. In addition, it provides the user with the possibility to automatically perform various computations by pressing the following buttons (Fig 17):

### 6.9.1 Internal load

Pressing this button presents in the tabular area (here referred to as the data grid view) of the *Results tab* the internal gross load (before retention) in each sub-catchment, and the net contribution (after retention) of each sub-catchment to the downstream sub-catchment summed over the entire simulation period

### 6.9.2 Sources

After the computation, the data grid view will contain the gross contribution (before retention) of the different sources in each sub-catchment summed over the entire simulation period

### 6.9.3 Apportionment

Clicking this button will start the computation of the source apportionment of the total upstream net load (after retention) calculated for the outlet of the sub-catchment that is chosen by inserting its catchment ID in the textbox labelled *Out* in the left margin of the *Result tab* (Fig. 17). I.e. it is possible to make a source apportionment for every sub-catchment in the system if wanted. The upper row of the presented data contains the actual load in kilograms per month that each source contributed with at the chosen outlet point. The lower row comprises the corresponding fractions.

### 6.9.4 Catch contr

Clicking this button will start the calculation of the nutrient mass contribution in kilograms per month from each sub-catchment to the chosen outlet. As mentioned in paragraph 6.9.3, the outlet catchment is selected by inserting its ID number in the textbox labelled *Out* (Fig. 17). The column labelled "Gross contribution" contains values that are identical to the values presented as gross contribution when pressing the internal load button. The column labelled "Contribution at outlet" contains the load from this sub-catchment at the chosen outlet point, i.e. after retention in all downstream sub-catchments in the flow path to the outlet.

### 6.9.5 The Catchment listbox

Clicking any of the catchment ID numbers in this listbox in the left margin of the *Result tab* will present the part of the complete results file relating to the chosen ID.

### 6.9.6 Other features

Other features of the *Result tab* are:

- open a plot window by clicking the *Plot* button to view the data in graphical form (Fig. 18).
- copy the present contents of the data table to the clipboard by clicking the *Copy* button.
- save the entire results file (consisting of all catchment ID data tables) to a semi-colon separated text file called results.out by clicking the *Write file* button.

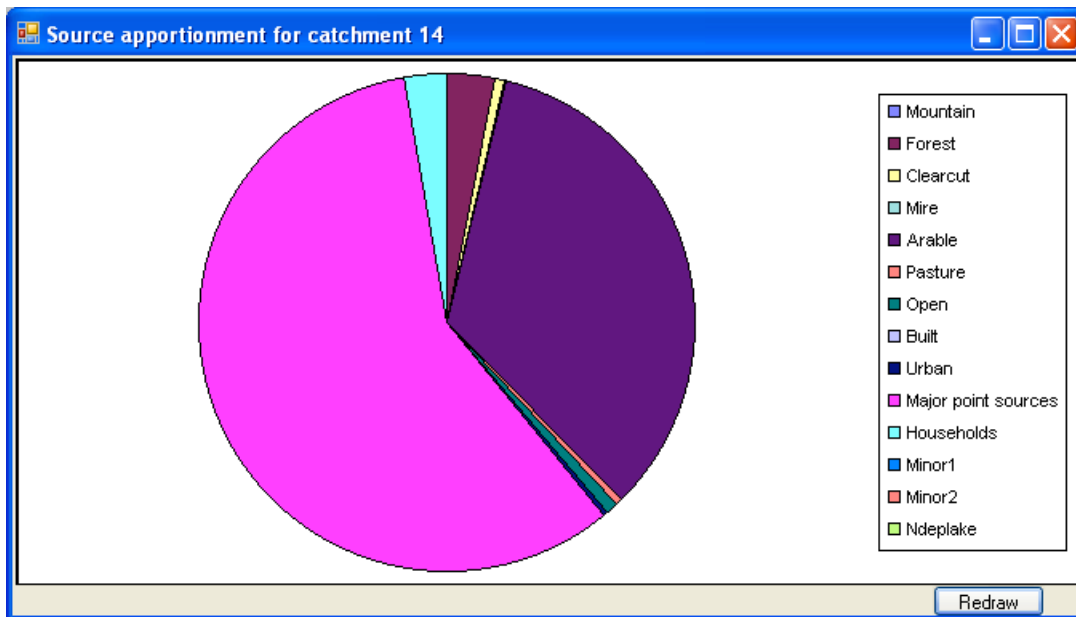


Figure 18. The source apportionment presented graphically by means of a pie chart for sub-catchment 14.

## 7 Special features

### 7.1 Removal of empty rows in the input data tables

If the program imported more rows from the Excel worksheet than are filled with data, you can double-click on a row header in any data table shown under the data tab to remove all rows where the first cell is empty. The model will not run if there is more than one empty row after the last data filled row.

### 7.2 Column mode switch

Under the data tab, you can change column mode by clicking the salmon coloured little square in the bottom right corner.

## 8 How to start using the Fyris model

### 8.1 System requirements

In order for the Fyris model to run properly on your computer, it is required that you have Windows XP including .NET framework installed. The .NET-framework should be provided with Windows Service Pack 2, but can otherwise be installed separately from Windows homepage. Furthermore, Office 2003 is required since the input data is imported using an Excel workbook.

Notice as well that the Fyris model utilises point (.) and not comma (,) to define non-integer numbers (e.g. 5.3 and not 5,3). Thus, make sure that your input data have the correct format! Depending on your computers national settings, you may want to change this using your computers Control Panel -> National settings -> Numbers.

## **8.2 Installing the program on your computer**

A standard set up program comprising two files (setup.exe and Setup Fyris model.msi) is provided for installation of the Fyris model on your computer. The program will check your computer to make sure that the .Net-framework is previously installed, and will encourage you to download it if it is missing. During the installation you have the possibility to decide in what folder you want the program installed, and the set up program will create a desktop shortcut as well as a start menu shortcut. If your computer is connected to a network, it is likely that administrator rights are needed for the installation.

## **8.3 Import data**

The first thing do to when you want to start working with the Fyris model is to import the data needed to run the model. The requirements on the input data have been mentioned in chapter 4 of this document. A short walkthrough is provided here:

- Open the project manager using the Menu.
- If needed, create a new workspace which will contain your projects by clicking the new button in the workspace panel.
- Start a new project by clicking the new button in the projects panel. A dialog will emerge and show Excel files in the directory last used on your computer. Browse to the Excel file you want to use as data source, and open it.
- Even if no error messages appeared during the opening of the Excel file, it might be a good idea to look through the imported data to make sure it was imported as expected. This can be done by browsing the data tables in the data grid view under the Data and Q-data tabs respectively.
- If there is more than one empty line beneath your imported data, remove it (paragraph 7.1).

## **8.4 Calibration**

Good modelling practice requires the user to calibrate the model such that the computed output compares well to the measured output. This is done by means of adjusting the model parameters,  $c_0$  and  $kvs$ . The Fyris model provides the user with two alternatives: manual or Monte Carlo simulations. The manual calibration is useful in getting acquainted with the model behaviour, and provides graphical means of comparing the modelled times series to the measured data values. In addition to the visual, subjective comparison, the model also computes two statistical goodness-of-fit values. Monte Carlo simulations are useful when assessing the model response to simultaneous changes in all parameter values. This differs from sensitivity analysis where only one parameter is altered while fixing all others. However, by plotting goodness-of-fit measures as a function of individual parameter values, a scatter plot is obtained which provides information about sensitivity to single parameters. When you feel confident with the results, it is time to start with scenario modelling as described below.

## **8.5 Scenarios**

The scenarios need to be created by the user by means of altering the input data, and then re-importing the data to the model to see the changes in output. Remember to keep the same parameter values as was found during the calibration process.

## 9 References

- Hansson, K., Wallin, M & Lindgren, G. The Fyris model Version 2.0. Technical description. – Swedish University of Agricultural Sciences, Dept. of Environmental Assessment, Report 2006:17, ISSN 1403-977X.
- Johansson, J-Å. & H. Kvarnäs, 1998. *Modellering av näringsämnen i Storsjön och dess tillrinningsområde (in Swedish)*. Länsstyrelsen i Gävleborgs län. Rapport 19998:13. ISSN 0204-5954. [Modelling nutrients in Lake Storsjön and its catchment. County Administration of Gävleborg. Report 1998:13].
- Johnsson, H., Larsson, M.H., Mårtensson, K. and M. Hoffmann 2002. *SOILNDB: a decision support tool for assessing nitrogen leaching losses from arable land*. Pages 505-517. *Environmental Modelling & Software* 17:505-517.
- Kvarnäs, H., 1996. *Modellering av näringsämnen I Fyrisåns avrinningsområde. Källfördelning och retention (in Swedish)*. Rapport från Fyrisåns vattenförbund 1996, 31 sid. [Modelling nutrient transport in the Fyris River catchment. Source apportionment and retention (in Swedish). – Report from River Fyris Society for Water Conservation, Uppsala, Sweden].
- Kvarnäs, H., 1997. *Modellering av näringsämnen i Vätterns tillrinningsområde. Källfördelning och retention (in Swedish)*. Vätternvårdsförbundet, rapport nr 46. ISSN 1102-3791. [Modelling nutrient transport in the catchment of Lake Vättern. Source apportionment and retention. – Lake Vättern Society for Water Conservation, Report no 46].
- Löfgren, S. & O Westling, 2002. *Modell för att beräkna kväveförluster från växande skog och hyggen i Sydsverige (in Swedish with English summary)*. Institutionen för miljöanalys, SLU, rapport 2002:1. [Model for estimating nitrogen losses from growing forests and clear-felled areas in southern Sweden. Dept. of Environmental Assessment, SLU, Report 2002:1. 23 pp.]
- Nash, J. E. and J. V. Sutcliffe , 1970. River flow forecasting through conceptual models part I — A discussion of principles, *Journal of Hydrology*, 10 (3), 282–290.
- Sonesten, L., Wallin, M. & H. Kvarnäs, 2004. *Kväve och fosfor till Vänern och Västerhavet. Transporter, retention och åtgärdsscenerierna inom Göta älvs avrinningsområde (in Swedish)*. Länsstyrelsen i Västra Götalands län, rapport nr 2004:33.ISSN 1403-168X. [Nitrogen and phosphorus loading on Lake Vänern and Västerhavet Sea. Transport, retention and nutrient reduction measures within the River Göta catchment. County Administration of Västra Götaland, report no 2004:33.ISSN 1403-168X].
- Ulén, B., Johansson, G. and K. Kyllmar 2001. *Model predictions and long-term trends in phosphorus transport from arable lands in Sweden*. *Agricultural Water Management* 49, 197-210.
- Wallin, M., Östlund, M. & H. Kvarnäs 2000. *Näringsbelastning på Vänerns vikar inom Karlstad kommun. Källfördelning, retention, mål och åtgärder (in Swedish)*. Institutionen för miljöanalys, SLU, rapport 2000:6. ISSN 1403-977X. [Nutrient loading in coastal areas of Lake Vänern within Karlstad Township. Source apportionment, retention, environmental objectives and measures. - Swedish University of Agricultural Sciences (SLU), Dept. of Environmental Assessment. Report 2000:6, ISSN 1403-977X, 113 p].

