



# Unraveling the genetic architecture of stripe rust resistance in ICARDA spring wheat

Elias Shewabez<sup>a,b</sup>, Laura Mugnai<sup>a</sup>, Wuletaw Tadesse<sup>c</sup>, Admas Alemu<sup>d,\*</sup>

<sup>a</sup> Department of Agriculture, Food, Environment and Forestry, University of Florence, Piazzale delle Cascine 18, 50144 Firenze, (FI), Italy

<sup>b</sup> Council for Agricultural Research and Economics Centre for Viticulture and Enology (CREA-VE), Via Casoni, 13, 31058 Susegana TV, Italy

<sup>c</sup> International Center for Agricultural Research in the Dry Areas (ICARDA), P.O. Box 6299, Rabat, Morocco

<sup>d</sup> Department of Plant Breeding, Swedish University of Agricultural Sciences, Alnarp, Sweden

## ARTICLE INFO

### Keywords:

Genome-Wide Association Study (GWAS)

*Puccinia striiformis* f. sp. *tritici* (*Pst*)

Quantitative Trait Loci (QTL)

Single-Nucleotide Polymorphism (SNP)

Wheat Stripe Rust Resistance

## ABSTRACT

Stripe rust, also known as yellow rust, caused by *Puccinia striiformis* f. sp. *tritici* (*Pst*), is among the most destructive fungal diseases affecting global wheat productivity. Identifying genetic loci associated with *Pst* resistance is crucial for developing durable *Pst*-resistant wheat varieties. This study aimed to discover genetic markers linked to *Pst*-resistance in wheat using a 15 K single-nucleotide polymorphism (SNP) array. Field screenings were conducted over two years (2018 and 2019) on a panel of 245 wheat breeding lines developed by the International Center for Agricultural Research in the Dry Areas (ICARDA) at the Kulumsa Agricultural Research Center in Ethiopia. Importantly, 36 breeding lines exhibited consistent immunity or resistance across both growing seasons. Genome-wide association studies (GWAS) identified 34 marker-trait associations (MTAs) across 10 loci that surpassed the significance threshold. Half of these SNP markers were located on chromosome 7B, while the remaining were distributed across chromosomes 1B, 2B, 4B, 5 A, and 6B. Many identified quantitative trait loci (QTLs) were in close proximity to known *Pst* resistance genes/QTLs, suggesting they correspond to the same genetic regions. Additionally, three QTLs—*EWYY5A.2*, *EWYY6B.1*, and *EWYY7B.3*—were notably distant from any of previously identified *Pst* resistance genes, emerging as potential novel loci from this study. These QTLs represent promising candidates for marker-assisted selection, facilitating the development of wheat cultivars with enhanced resistance to *Pst*. Additionally, this study recommends incorporating the 36 consistently resistant lines into national and international wheat breeding programs to enhance *Pst* disease management efforts.

## 1. Introduction

Wheat stripe/yellow rust, caused by *Puccinia striiformis* Westend. f. sp. *tritici* (*Pst*), is one of the major constraints limiting wheat productivity and quality around the world (Chen et al., 2014; Tadesse et al., 2017; Khanfri et al., 2018; Bhavani et al., 2021; Bhavani et al., 2022). In recent years, wheat production has faced a growing challenge with the emergence of new and virulent strains of the *Pst* pathogen (Afzal et al., 2024). Climate change worsens the spread of disease by altering pathogen dynamics and host susceptibility conditions (Bouvet et al., 2022;

Zhang et al., 2022; Shahin et al., 2024; Župunski et al., 2024). Furthermore, this challenge is compounded by the narrow genetic base of current cultivars (Muleta et al., 2017a), which limits genetic diversity and increases susceptibility to pathogen adaptation. Many cultivars share similar resistance genes, which makes them susceptible to rapidly evolving pathogens. Consequently, the breakdown of resistance genes poses a significant threat to wheat production. To date, disease has been reported in more than 60 countries, including North and East Africa (Muleta et al., 2017a; Meyer et al., 2021), Asia (Sharma et al., 2016; Wu et al., 2021), South America (El Solh, 2012), Australia (Wellings, 2007;

**Abbreviations:** ANOVA, Analysis of variance; BLUP, Best linear unbiased prediction; CI, Coefficient of infection; DS, Disease severity; GWAS, Genome-wide association study; ICARDA, International Center for Agricultural Research in the Dry Areas; KARC, Kulumsa Agricultural Research Center; IR, Infection response; LD, Linkage disequilibrium; MAF, Minor allele frequency; MAS, Marker-assisted selection; MCMC, Markov chain Monte Carlo; MLM, Mixed Linear Model; MTA, Marker-trait association; PC, Principal of components; PCA, Principal component analysis; *Pst*, Wheat stem rust fungus *Puccinia striiformis* Westend. f. sp. *tritici*, Eriks; PIC, Polymorphism information content; PV, Phenotypic variance; QQ, Quantile-quantile; QTL, Quantitative trait locus; SNP, Single nucleotide polymorphism.

\* Corresponding author.

E-mail address: [admasalemu.abebe@slu.se](mailto:admasalemu.abebe@slu.se) (A. Alemu).

<https://doi.org/10.1016/j.plgene.2024.100478>

Received 16 July 2024; Received in revised form 13 November 2024; Accepted 17 November 2024

Available online 21 November 2024

2352-4073/© 2024 The Authors. Published by Elsevier B.V. This is an open access article under the CC BY license (<http://creativecommons.org/licenses/by/4.0/>).

Milus et al., 2009), North America (Markell and Milus, 2008; Wan, 2010), Europe (Bhattacharya, 2017), and other parts of the world (Savary et al., 2019; Mapuranga et al., 2022).

This issue is especially evident in Ethiopia, where *Pst* epidemics have significantly impacted crop yields (Dawana et al., 2024; Mekonnen et al., 2024), resulting in more than a 10 % decline and approximately \$94 million in annual losses (Aslake and Sintayehu, 2022). The recurrent outbreaks have led to the collapse of many well-known and widely cultivated wheat varieties. For example, Laketch, the semi-dwarf wheat variety, in 1977 (Gebre-Mariam et al., 1991) and Dashen, a popular high-yielding variety with the *Yr9* gene, in 1988 were damaged by the newly emerged *Pst* races (Badebo and Bayu, 1991). In 2010, a major *Pst* epidemic affecting nearly 600,000 ha of wheat (Patpour et al., 2016; Tolemariam et al., 2018) led to a significant loss in total wheat production in Ethiopia (Meyer et al., 2021). The epidemic was caused primarily by the race *PstS6*, leading to the breakdown of dominant wheat varieties such as Galema (HAR 604) and Kubsa (HAR 1685) with the *Yr27* gene (Tadesse et al., 2017; Meyer et al., 2021). Another notable *Pst* epidemic occurred in 2016, primarily caused by the *PstS11* race. This epidemic resulted in an estimated loss of 65 million USD, damaging two widely cultivated wheat varieties, Ogolcho and Dandaa (Meyer et al., 2021).

Genomic-assisted breeding has emerged as a powerful approach to enhance breeding and selection efforts in crop plants (Alemu et al., 2024). Genome-wide association study (GWAS) is one of the genomic-assisted breeding methods used to discover genomic regions associated with various traits of interest in wheat and other crop plants. Over the past two decades, GWAS has successfully identified genomic regions linked to important agronomic traits in wheat, including resistance to pests and diseases, tolerance to abiotic stresses and for improving grain yield and quality (Muleta et al., 2017a; Ogbonnaya et al., 2017; Mathew et al., 2019; Ward et al., 2019; Chaurasia et al., 2021; Saini et al., 2022; Shewabez et al., 2022). GWAS aimed at identifying genetic loci related to *Pst* resistance began in 2007 with the pioneering work of Crossa et al. 2007 (Crossa et al., 2007). Since then, several GWAS studies have been conducted using diverse genetic resources to uncover additional genomic regions associated with *Pst* resistance (Zegeye et al., 2014a; Maccaferri et al., 2015; Muleta et al., 2017a; Kumar et al., 2020; Li et al., 2020a; El Messoadi et al., 2022). Wheat is particularly suitable for GWAS study due to the abundant availability of high-quality genome-wide DNA markers (Jamil et al., 2020; Rahman et al., 2020) that exhibits significant levels of linkage disequilibrium (LD) with causative QTLs/genes (Chao et al., 2010). To date, researchers have identified over 83 resistance genes/alleles (*Yr1–Yr83*) that confer resistance to *Pst* (Mcintosh et al., 2013; Li et al., 2020a, 2020b; Baranwal, 2022). However, achieving long-term and durable resistance against evolving pathogen strains remains a significant challenge. This highlights the necessity for ongoing research and breeding efforts in this field.

To address this issue, it is essential to identify and incorporate diverse genetic markers in wheat to confer durable resistance against this evolving threat. In this study, a diverse collection of wheat breeding lines from around the world underwent evaluation for their resistance to *Pst* in Ethiopia. The research employed GWAS to identify markers associated with resistance against *Pst* disease.

## 2. Materials and methods

### 2.1. Plant material and disease evaluation

In this study, a panel of 245 bread wheat (*Triticum aestivum*) breeding lines developed by ICARDA were evaluated. Their origin, pedigree, and experimental design are provided in Table S1. The field experiment was conducted at Kulumsa agricultural research centre in South-Eastern Ethiopia (8°2' N, 39°10' E, 2200 m.a.s.l.) during the main cropping seasons of 2018 and 2019. The mean maximum and minimum temperatures were 23.2 °C and 10 °C, respectively, and the mean annual precipitation

was 823.1 mm. This region has a favourable condition for *Pst* infection and is recognized as a centre of excellence to screen resistant wheat genotypes in the East African region.

Field evaluation was conducted with an augmented experimental design along with five known varieties used as checks (Digelu, Kubssa, Hidasse, Honqolo, and Ogolcho). These checks were replicated across five blocks, while the 245 wheat genotypes were evaluated without replication. Disease evaluation was conducted assessing the disease severity (DS) and infection response (IR) of genotypes. Each line was evaluated three times per year, and the score with highest susceptibility—typically the third score—were used for the current study. Disease severity was measured using the modified Cobb scale which quantifies the percentage of the flag leaf affected by rust pustules with the values of 0 %, 5 %, 10 %, 20 %, 40 %, 60 %, 80 %, and 100 % (Peterson et al., 2011). The infection response (IR) of genotypes against *Pst* was categorized into six different classifications. Immune (I) genotypes exhibited no yellow rust infection. Resistant (R) genotypes showed no yellow rust pustules or necrosis on the leaf. Moderately Resistant (MR) genotypes displayed small and tiny pustules with minimal necrosis on the leaf. Intermediate (M) genotypes were characterized by an intermediate level of pustules. Moderately Susceptible (MS) genotypes had a moderate level of pustules with no necrosis but displayed observable chlorosis on the leaf. Finally, Susceptible (S) genotypes were identified by fresh, bulky pustules accompanied by necrosis and chlorotic areas on the leaf surface. Coefficient of infection was calculated by multiplying the DS by a constant value of each IR; immune = 0.0, R = 0.2, RMR = 0.3, MR = 0.4, MRMS = 0.6, MS = 0.8, MSS = 0.9, and S = 1.0.

### 2.2. Statistical analysis of phenotypic data

Analysis of variance (ANOVA) was performed on DS (disease severity), IR (infection response), and CI (coefficient of infection) performed using the *nlme* package (version 3.1.0) <https://github.com/cran/nlme> in R environment. The analysis was conducted considering the variables for DS, IR, and CI in relation to wheat line, year, and lines by year interactions (Morales et al., 2021; Shewabez et al., 2022). The adjusted mean values as best linear unbiased predictions (BLUPs) and correlations between phenotypic parameters over two years was calculated using a mixed linear model in the *lme4* package in R environment (<https://github.com/cran/lme4>) (Shewabez et al., 2022). Broad-sense heritability ( $H^2$ ) across years was calculated using the formula:

$$H^2 = \sigma^2 G / [\sigma^2 G + ((\sigma^2 E)/y) + (\sigma^2 G \times (\sigma^2 E)/y) + ((\sigma^2 \text{error})/y)]$$

where  $\sigma^2 G$  is the genotypic variance,  $\sigma^2 E$  is the environmental (year-location combination) variance,  $\sigma^2 G \times E$  is the genotype by environment (GxE) interaction variance,  $\sigma^2 \text{error}$  is the residual error variance and  $y$  is the number of years.

### 2.3. Genotyping

DNA was extracted from the leaf samples of one-week seedlings following the protocol described by Allen et al. (2006). Single nucleotide polymorphism (SNP) genotyping was performed using the Illumina's iSelect 15 K SNP wheat array by TraitGenetics in Gatersleben, Germany. The array produced a total of 13,006 SNP markers. Markers were further screened with a minor allele frequency (MAF) > 5 % and < 10 % missing values per individual genotypes to ensure data quality. After screening, a total of 9523 quality SNP markers and 245 lines were used for all subsequent statistical analyses.

### 2.4. Genome-wide association study

The genome-wide association study (GWAS) was conducted using the mixed linear model (MLM) in TASSEL 5.2 software to identify SNP markers significantly associated with resistance to *Pst* infection. The

MLM is one of the powerful single-locus based GWAS models with a capability to incorporate confounding factors such as population structure and kinship similarities and able to control the false-negative results. The applied MLM GWAS model can be explained with the formula:

$$y = X\alpha + Q\delta + K\mu + e$$

where  $y$  represents the phenotypic values,  $X$  represents SNP marker genotypes,  $\alpha$  is a vector of fixed effects resulting from the genotype,  $Q$  represents the population structure,  $\delta$  is a vector of fixed effects resulting from the population structure,  $K$  represents the relative kinship matrix,  $\mu$  is a vector of random effects from kinship and  $e$  is a vector of residuals. To determine the significance of the GWAS results, a threshold value  $-\log_{10}(P \leq 0.001)$  was applied. An exploratory threshold of  $-\log_{10}p \geq 3$  ( $P \leq 0.001$ ) was employed to identify significantly linked SNP markers in the current GWAS analysis following previous studies (Alemu et al., 2021) (Table S3).

### 3. Results

#### 3.1. Phenotypic evaluation

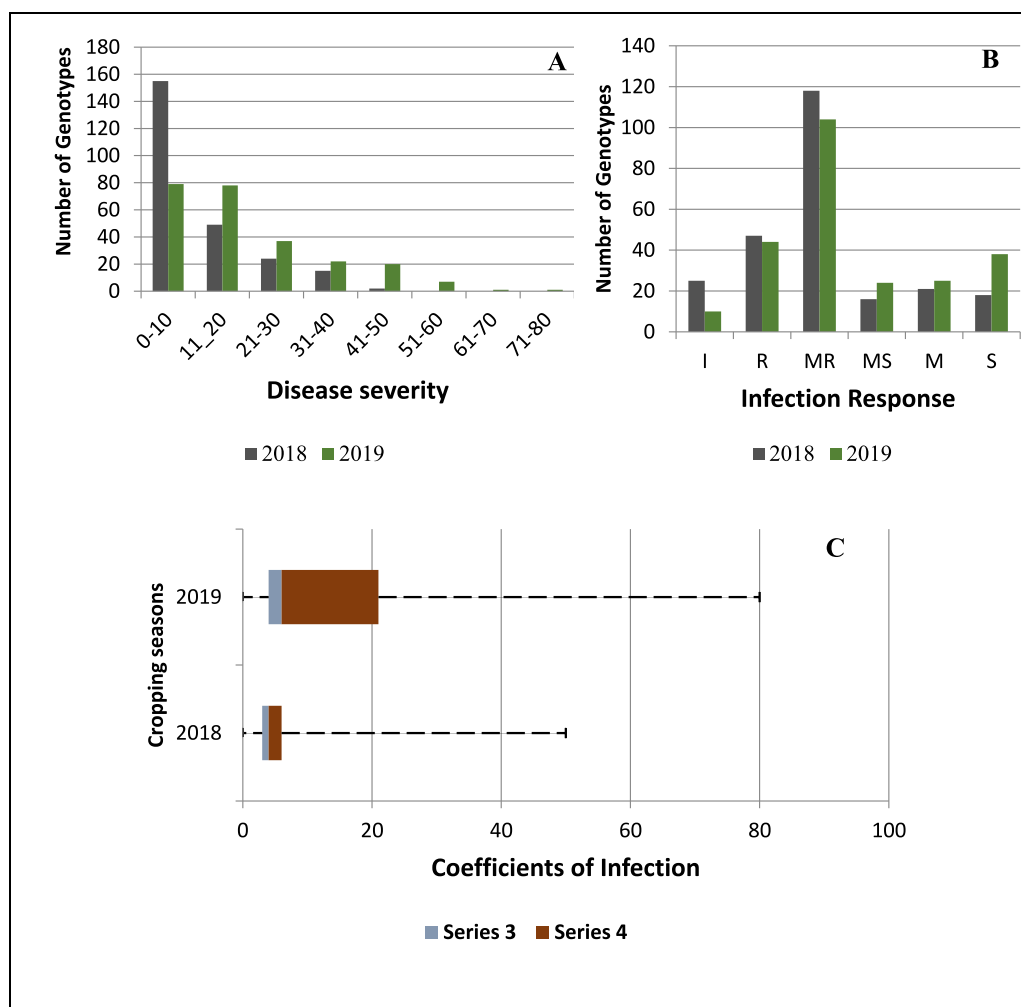
The 245 evaluated wheat lines exhibited significant variation in disease severity (DS) and infection response (IR) across two field trials. In 2018, DS ranged from 0 % to 50 %, averaging 14 %, with 78 % of lines

classified as resistant, 15 % as moderately resistant, and 7 % as susceptible. Most lines (56.7 %) scored IR values between 0.4 and 0.6, indicating moderate resistance, while 29.3 % showed immunity or resistance, and 14 % were moderately susceptible or susceptible. Coefficient of infection (CI) scores were primarily low, with two-thirds of lines scoring  $\leq 5$  and an average CI of 8.

In 2019, wetter conditions led to higher disease reactions, with mean DS, IR, and CI values of 22 %, 0.5, and 19, respectively. Approximately 25 % of lines displayed immunity or resistance, nearly half exhibited moderate resistance, and the remaining 25 % were moderately susceptible or susceptible. Across both seasons, 121 lines (48 %) were classified as resistant based on DS ( $\leq 15$  %), while 151 lines (60 %) were resistant according to CI ( $\leq 15$ ). Notably, 36 lines (14.16 %) showed complete immunity to *Pst* with IR scores of 0 to 2. Despite increased disease severity in 2019, resistance patterns were consistent across years, underscoring the potential of these lines for breeding resistant varieties (Fig. 1 and Table 1).

#### 3.2. Phenotypic analysis and heritability

The analysis of variance (ANOVA) result revealed high significant differences ( $P < 0.0001$ ) among studied genotypes for all three applied parameters including disease severity (DS), infection response (IR), and coefficient of infection (CI) related to *Pst* infection. Pearson's correlation coefficients between DS, IR and CI between the two seasons were 0.72,



**Fig. 1.** Phenotypic distribution of 245 wheat lines against stripe rust under natural disease pressure as infection response (IR), disease severity (DS) and coefficient of infection (CI) in corresponding two environments (2018 and 2019). (A) Frequency of genotypes for DS in percentage; (B) frequency of genotypes for IR; (C) Frequency of genotypes for CI on the scale of 0–100. Each environment is represented with different colours as indicated by the colour legend.

**Table 1**

Mean response, variance component estimates and heritability for infection response (IR), disease severity (DS), and coefficient of infection (CI) variables.

Parameters	DS (%)	IR (1–0)	CI
Range	0–80	0–1	0–80
Mean	18.1	0.46	13.0
$\sigma_G^2$	330.3***	1.6567***	516.22***
$\sigma_E^2$	48.4*	0.10776***	64.12*
$\sigma_{G \times E}^2$	67.5**	0.03463 <sup>ns</sup>	77.68*
$\sigma^2_{\text{error}}$	30.0 <sup>ns</sup>	0.04549	44.23
H	0.82	0.93	0.84
r	0.72	0.84	0.74

where  $\sigma_G^2$  is the genotypic variance,  $\sigma_E^2$  is the environmental (year-location combination).

variance,  $\sigma^2_{G \times E}$  is the genotype by environment (GxE) interaction variance,  $\sigma^2_{\text{error}}$  is the.

residual error variance and  $y$  is the number of years;  $H^2$  is heritability;  $r$ , Pearson's correlation coefficients among between two seasons.

0.84, and 0.74, respectively, all with  $p$ -values less than 0.0001, indicating strong positive relationships and high statistical significance. The broad-sense heritability ( $H^2$ ) estimates from the variance components of DS, IR, and CI across the seasons were 84 %, 71 %, and 86 %, respectively (Table 1). The relatively high  $H^2$  estimate indicate that the current disease evaluation is appropriate for conducting further GWAS analyses to explore more genomic resources for *Pst* resistance.

### 3.3. Genome-wide association analysis

The Genome-Wide Association Study (GWAS) was conducted using (Best Linear Unbiased Prediction (BLUP) values of coefficient of infection along with the SNP markers. To improve the accuracy of the analysis and control false-positives the mixed linear model (MLM) model was employed, integrating the population structure as principal components (PCs) and kinship matrix. The model performance was assessed through a quantile-quantile (Q-Q) plot, which indicated that the  $p$ -values from the MLM functions closely aligned with the expected distribution. This graphical evidence indicates that the MLM model provides an acceptable control for false positives in the GWAS analysis (Fig. 2B). In addition, the marker-trait associations with a threshold of  $-\log_{10}(P\text{-value}) \geq 3$  is reported as identified MTAS (Fig. 2A).

The current study has identified 34 significant MTAS associated with *Pst* resistance grouped into 10 QTLs. These QTLs were further categorized into two groups based on the significance thresholds of MTAS: major QTLs ( $-\log(P) \geq 4$ ) and nominal QTLs ( $-\log(P)$  values of  $\geq 3$ ). Among the 10 identified QTLs, the two adjacent QTLs, *EWYY7B.1* and *EWYY7B.2*, exhibited the highest significance. In the second category, eight QTLs (*EWYY1B.1*, *EWYY2B.1*, *EWYY2B.2*, *EWYY4B.2*, *EWYY5A.2*, *EWYY6B.1*, *EWYY6B.2*, and *EWYY7B.3*) were classified as nominal QTLs (Table 2). Detailed information regarding the explained phenotypic variance, marker positions and references to previously reported *Pst* resistance genes and QTLs is provided in Table 2. Additionally, suggestive QTLs with a relatively low threshold value of  $-\log(P) \geq 2.5$ , encompassing 62 SNPs were identified. The comprehensive information about these suggestive QTLs is provided in Table S2.

The identified MTAS were distributed across six chromosomes including 5 A, 1B, 2B, 4B, 6B, and 7B. Chromosomes 5 A, 1B, and 4B each contained one QTL associated with *Pst* resistance. In contrast, chromosomes 2B and 6B each had two QTLs, while chromosome 7B featured three loci linked to *Pst* resistance (Fig. 3 and Table 2).

On chromosome 5 A, locus *EWYY5A.2* was identified comprising three co-localized SNP markers (*Tdurum\_contig50175\_875*, *BS00041063\_51*, *Tdurum\_contig10843\_745*) at 93.23 centimorgans (cM). This QTL explained 6.62 % of the total of the observed phenotypic variation.

On chromosome 1B, with only a single SNP marker

*Kukri\_c92979\_195* and designated as QTL *EWYY1B.1* (27.62 cM) explained 5.2 % of the total phenotypic variation.

On chromosome 4B, the QTL *EWYY4B.2* comprised four SNP markers including *Excalibur\_c27948\_1073*, *RAC875\_c2456\_849*, *RAC875\_c39226\_131*, *BS00003421\_51*. The SNP markers have the genetic map position in the range of 71.37 cM to 75.65 cM and accounted for 5.4 % to 7.0 % of the total phenotypic variation, with an average of 7.7 %. (Table 2 and Fig. 3).

On chromosome 2B, two loci were associated with *Pst* resistance (Table 2 and Fig. 3). The markers *RAC875\_c26469\_480* and *RAC875\_rep\_c109207\_706* were included in the QTL *EWYY2B.1* and collectively explained 5.7 % of the total phenotypic variation observed in the current population. The other identified QTL on this chromosome, *EWYY2B.2*, comprising the SNP marker *Kukri\_c55909\_1109* at 141.48 cM which accounted for 7.45 % of the total phenotypic variation.

On chromosome 6B, two QTLs (*EWYY6B.1* and *EWYY6B.2*) were identified, each associated with significantly linked SNPs. The QTL *EWYY6B.1* comprised three SNPs located on from 64.08 cM (*wsnp\_Ex\_c17667\_26408733*) to 71.76 cM (*GENE-4183\_1109*). The second QTL *EWYY6B.2* comprised markers *wsnp\_CAP11\_c1432\_806102*, *wsnp\_Ex\_c1276\_2445537* and *Kukri\_c12602\_861*. This QTL is situated at the genetic map position between 73.24 cM (*wsnp\_CAP11\_c1432\_806102*) to 75.35 cM (*Kukri\_c12602\_861*) and accounts an average 5.93 % of the total phenotypic variation (Table 2).

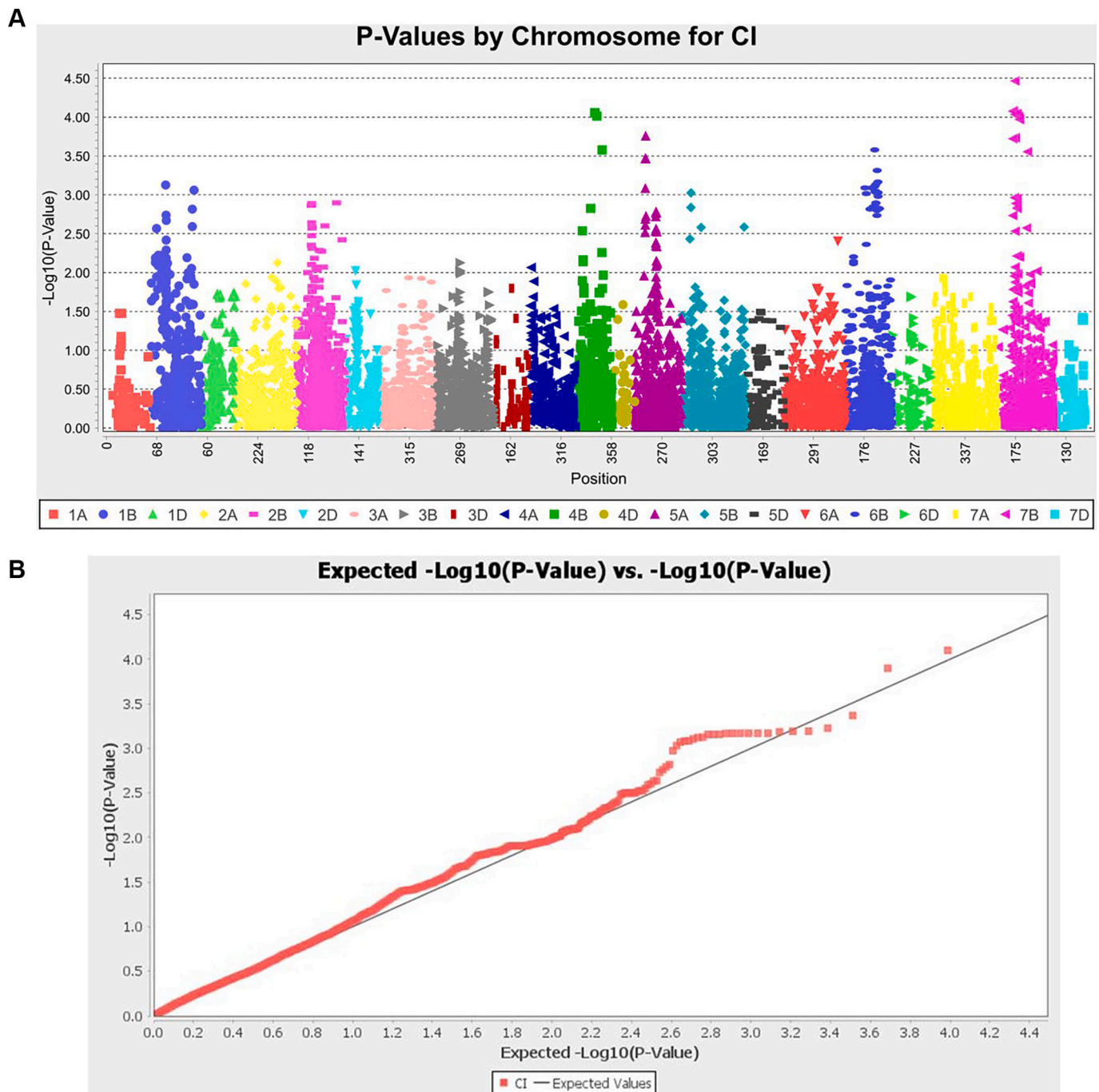
On chromosome 7B, the three QTLs *EWYY7B.1*, *EWYY7B.2* and *EWYY7B.3*, with SNP markers were significantly associated with *Pst* resistance. Notably, *EWYY7B.1* and *EWYY7B.2* were designated as major QTLs with SNPs surpassed the significant threshold of ( $\geq 4$ ) *EWYY7B.1* found in between 63.09 cM (*wsnp\_BF200891B\_Ta\_2\_1*) and 71.33 cM (*wsnp\_Ex\_c10565\_17249813*) accounted for an average phenotypic variation of 7.7 %. Adjacent to this QTL, another QTL *EWYY7B.2* was identified comprising three SNPs.

(*Excalibur\_c17078\_400*, *Tdurum\_contig81318\_116* and *wsnp\_Ku\_c217\_52\_31528824*) and contributed to an average phenotypic variation of 7.1 %. The third QTL identified on the same chromosome was *EWYY7B.3* with marker *BS00022045\_51* at 89.64 cM and accounted for 6.3 % of the total phenotypic variation (Table 2 and Fig. 3).

## 4. Discussion

*Puccinia striiformis* f. sp. *tritici* (*Pst*), the pathogen responsible for wheat stripe rust, is a significant global threat to wheat production (Schwessinger et al., 2019). The emergence of diverse strains complicates disease management, emphasizing the need for innovative approaches in breeding and monitoring (Shahin, 2020; Bouvet et al., 2022; Li et al., 2023). An effective strategy involves exploring new genomic resources through genome-wide association studies (GWAS) to identify and integrate quantitative trait loci (QTL) and genes associated with resistance to *Pst*. Recent studies have identified multiple resistance genes and loci critical for developing resistant wheat cultivars. Key findings include resistance genes identified in Chinese wheat landraces by Qiao et al. (2024), fourteen SNP markers associated with *Pst* resistance by El Messoadi et al. (2022), and a meta-QTL analysis by Kumar et al. (2023) revealed the complexity of resistance mechanisms. These findings provide valuable tools for breeders, yet the problem demands further research and genetic diversity in breeding strategies to ensure sustainable wheat production.

GWAS have been applied to identify novel QTLs associated with *Pst* resistance in Ethiopia wheat panels. For instance, Zegeye et al. (2014a, 2014b) conducted a GWAS on 181 synthetic hexaploid wheats, identifying 27 SNPs linked to seedling resistance and 38 SNPs associated with adult plant resistance to *Pst*. Six genomic regions were consistently associated with resistance, with novel QTLs found on chromosomes 1AS, 3DL, 6DS, and 7AL. Additionally, Atsbeha et al. (2023) conducted a GWAS on a panel of 178 genotypes, identifying significant QTLs for *Pst* resistance, including 12 novel loci. Similarly, Muleta et al. (2017a,



**Fig. 2.** Manhattan plot and Q-Q-plots of genome-wide association scan for stripe rust resistance in a panel of 245 wheat breeding lines using the mixed linear model (MLM) model. Each dot represents a single SNP. 2 A- is Manhattan plots of the  $-\log_{10}$  ( $P$ -value) values versus genomic distances of the SNPs significantly associated with wheat stripe rust resistance in wheat at FDR thresholds with  $P$  values of 0.05 above which the markers were strongly associated with stripe rust resistance. 2B- Q-Q plots of GWAS results using MLM model. The plots show the observed  $p$ -values ( $p$ ) for the association between CI and each tested marker expressed as  $-\log_{10}$  ( $P$ -value) of  $p$  ( $y$ -axis) plotted against  $-\log_{10}$   $P$  of the expected  $p$ -values ( $x$ -axis) under the null hypothesis of no association for the analyses.

2017b) used multi-environment field trials and seedling resistance screening to reveal several marker-trait associations. Despite these significant advancements, fully understanding the genetic basis of wheat resistance to *Pst* remains a critical challenge. In the current study, GWAS was applied to identify SNP markers linked to *Pst* resistance in a set of 245 spring wheat lines. The findings showed that most of the lines displayed resistance or moderate resistance to *Pst*. Additionally, the study revealed several genes/QTLs associated with resistance to *Pst*, which had been previously identified by different researchers. Furthermore, this study identified three potentially novel genomic regions linked to

resistance against *Pst*. This discovery contributes valuable insights into the genetic characteristics of these germplasms and its potential for enhancing the resistance of future wheat varieties against *Pst*.

#### 4.1. Assessing environmental and genetic factors influencing wheat stripe disease severity in Ethiopia

The severity and spread of *Pst* disease are strongly influenced by environmental factors such as temperature, humidity, and rainfall. To enable effective management of wheat stripe rust, it is crucial to assess

**Table 2**

Summary of the marker-trait associations detected in the 245 wheat breeding lines for stripe rust resistance.

Trait	QTL	Marker ID	Marker Name	Alleles	C	Pos <sup>a</sup>	p	R <sup>2</sup>	Yr/QTL	%	Reference
CI									QYr.cau-		
	EWYY1B.1	IWB48324	Kukri_c92979_195	C/T	1B	27.62	3.340569	5.163	IBS_AQ24788-53	15.8	(Lukaszewski, 2000)
CI	EWYY2B.1	IWB55936	RAC875_c26469_480	C/T	2B	76.7	3.280868	6.48	QYr.ucw-2B_UC1110	40.6	El Solh, 2012
CI		IWB61862	RAC875_rep_c109207_706	C/T	2B	78.99	3.176148	4.859		40.6	
CI	EWYY2B.2	IWB46560	Kukri_c55909_1109	T/C	2B	141.48	3.807739	7.457	Yr43, Yr53	74.9	(Xu et al., 2013)
CI	EWYY4B.2	IWB24647	Excalibur_c27948_1073	C/T	4B	71.37	3.929556	7.683	Yr62	58.1	(Lu et al., 2014)
CI		IWB55675	RAC875_c2456_849	G/A	4B	71.46	3.918329	7.66		58.1	
CI		IWB57491	RAC875_c39226_131	A/G	4B	72.14	3.907244	7.638		58.1	
CI		IWB5827	BS00003421_51	C/T	4B	75.65	3.595919	7.019		61.5	
CI					5						
	EWYY5A.2	IWB72051	Tdurum_contig50175_875	A/G	A	93.23	3.461778	6.745		62.7	This study
CI					5						
		IWB8258	BS00041063_51	G/A	A	93.23	3.163018	6.185		62.7	
CI					5						
		IWB66780	Tdurum_contig10843_745	C/T	A	93.23	3.163018	6.185		62.7	
CI	EWYY6B.1	IWA2244	w SNP_Ex_c17667_26408733	A/G	6B	64.08	3	5.811		50.2	This study
CI		IWB31427	Excalibur_rep_c94584_98	C/T	6B	69.94	3.48071	6.776		50.2	
CI		IWB33815	GENE-4183_1109	C/T	6B	71.76	3.065522	5.944		50.2	
CI									QYr.ucw-6B (IWA7257)		(Maccaferri et al., 2015)
	EWYY6B.2	IWA670	w SNP_CAP11_c1432_806102	T/C	6B	73.24	3.03323	5.879		57.4	
CI		IWA1679	w SNP_Ex_c1276_2445537	T/C	6B	73.93	3.118598	6.068		57.4	
CI		IWB40857	Kukri_c12602_861	G/A	6B	75.35	3.084785	5.982		57.4	
CI	EWYY7B.1	IWA418	w SNP_BF200891B_Ta_2_1	T/C	7B	63.09	3.628507	7.088	Yr39	33.4	(Lin, 2007)
CI		IWB3531	BobWhite_c46772_564	G/A	7B	64.59	4.034968	7.929			
CI		IWB54284	RAC875_c1638_165	G/A	7B	65.44	4.028302	7.884			
CI		IWA1543	w SNP_Ex_c11860_19030807	T/C	7B	67.5	4.404724	8.67		12.1	
CI		IWB58816	RAC875_c52266_76	T/C	7B	69.39	3.912787	7.649			
CI		IWB38584	Ku_c17257_926	A/G	7B	69.93	3.921145	7.697			
CI		IWB57902	RAC875_c43108_1021	G/A	7B	69.93	3.912787	7.649			
CI		IWB39827	Ku_c68626_1054	G/A	7B	69.93	3.912609	7.677			
CI		IWB50896	Ra_c11164_740	A/G	7B	71.33	3.916497	7.687			
CI		IWB34834	IAAV4126	G/A	7B	71.33	3.914281	7.681			
CI		IWB52695	Ra_c7974_1192	T/C	7B	71.33	3.913498	7.685			
CI		IWA311	w SNP_BE498662B_Ta_2_1	T/C	7B	71.33	3.912787	7.649			
CI		IWA1352	w SNP_Ex_c10565_17249813	T/C	7B	71.33	3.912787	7.649			
CI	EWYY7B.2	IWB22908	Excalibur_c17078_400	G/A	7B	73.39	3.930591	7.733	Yr39	39.1	(Lin, 2007)
CI		IWB73494	Tdurum_contig81318_116	C/T	7B	73.39	3.909107	7.657			
CI		IWA6717	w SNP_Ku_c21752_31528824	A/G	7B	73.79	4.003423	7.835			
CI	EWYY7B.3	IWB6876	BS00022045_51	T/C	7B	89.64	3.249414	6.311		47.5	This study

QTLs, quantitative trait loci; SNPs, single nucleotide polymorphism; C, chromosome position; Pos, marker's genetic position mapped in the wheat 90KSNP consensus map scale: centimorgan; %, percentage of the total length of the chromosomes in the consensus map (Wang et al., 2014); R<sup>2</sup>, phenotypic variance explained by the markers.

natural disease pressure in regions where the disease is prevalent. In line with this, this study focuses on southeastern Ethiopia, recognized as a hotspot for *Pst* infection (Tilahun Hadis, 2019), making it an ideal location for evaluating disease dynamics and management strategies.

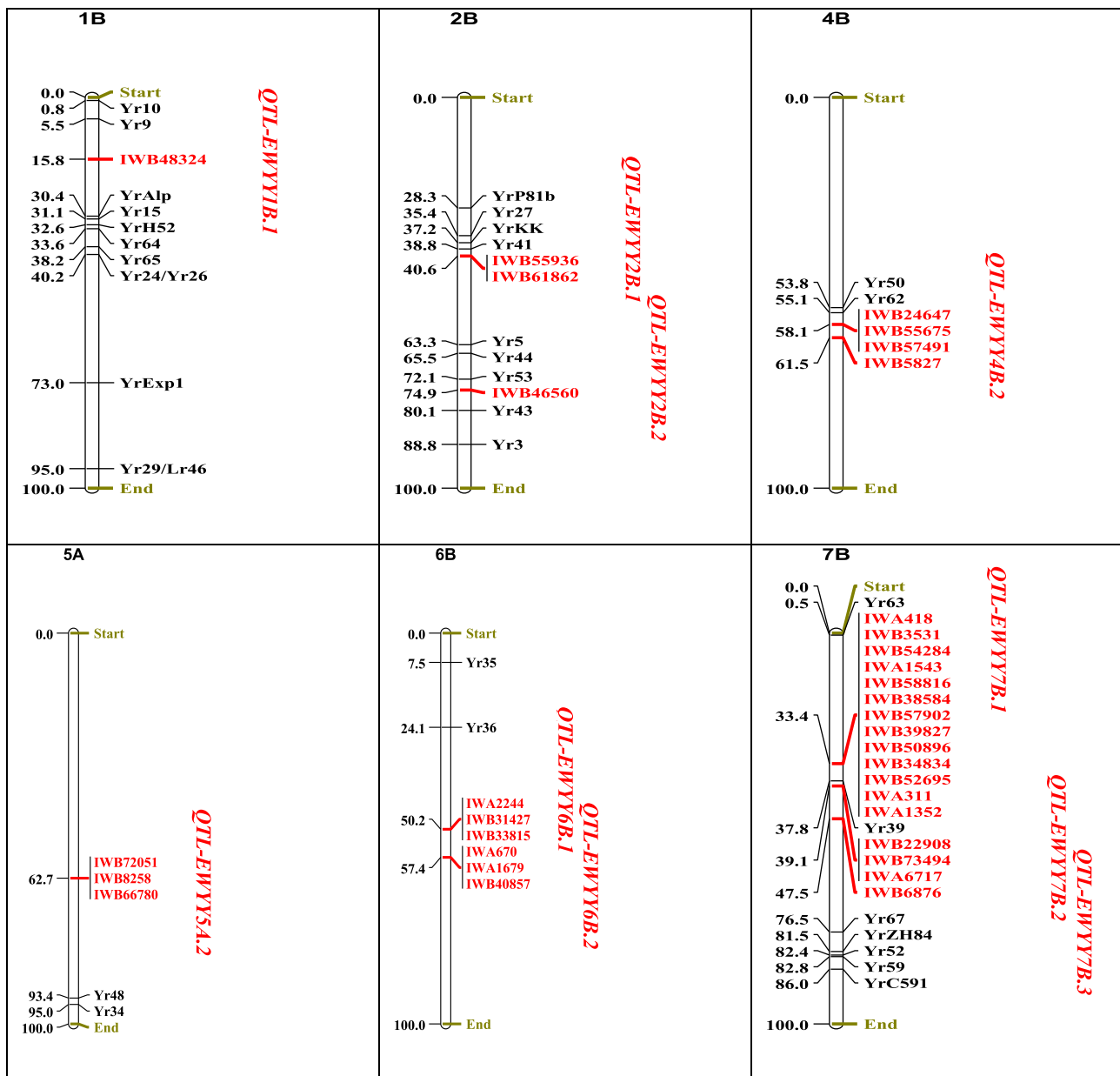
The study's phenotypic analysis reveals significant variation and high heritability in disease severity (DS), infection response (IR), and coefficient of infection (CI), indicating a strong genetic basis that supports the effectiveness of GWAS. High broad-sense heritability confirms that much of the observed variation is genetically driven. Similar to these findings, research on *Pst* indicates that genetic factors largely influence disease resistance, allowing GWAS to identify robust resistance loci (Li et al., 2020a; Mu et al., 2020). ANOVA results indicate that genetic factors significantly impact DS, IR, and CI, while genotype-by-environment interactions for DS and CI underscore the need for multi-environment trials, as environmental variability can affect resistance traits. In contrast, IR's high stability across the two years aligns with findings in wheat, where certain infection-related parameters demonstrate consistency across environments, enhancing their reliability for selection. Furthermore, the study's identification of resistant genotypes with strong correlations across years supports the persistence of resistance traits, which is crucial for effective long-term disease management (Table 1).

#### 4.2. Identification of key QTLs for wheat stripe rust resistance through GWAS

The genome-wide association study (GWAS) method for identifying marker-trait associations (MTAs) is a powerful approach for identifying specific genomic regions linked to a trait of interest. In this study, 10 QTLs associated with *Pst* resistance were identified. These QTLs were classified into three groups based on their statistical significance threshold values following the criteria established by Alemu et al. (2021). These categories included major QTLs ( $-\log(p) \geq 4$ ), nominal QTLs ( $-\log(p) \geq 3$ ), and suggestive QTLs ( $-\log(p) \geq 2.5$ ). Furthermore, these QTLs were categorized based on previously reported genes and QTLs associated with *Pst* resistance (Mcintosh et al., 2016; Maccaferri et al., 2015; Mcintosh et al., 2016; Kumar et al., 2020; Li et al., 2020b). The first category comprised QTLs located near previously identified *Pst* resistance genes. The second group included QTLs located at loci co-located with previously reported QTLs associated with *Pst* resistance. Nevertheless, the precise genes responsible for *Pst* resistance in these regions remain undetermined. The third, and the most importance category comprised genomic regions containing newly discovered QTLs in this study. These loci were distinctly distant from previously identified *Pst* resistance genes and QTLs.

#### 4.3. Comparing QTLs to known genes with *Pst* resistance

Among the ten identified QTLs in this study, the four QTLs



**Fig. 3.** Map of significant MTAs and QTLs showing 245 elite breeding lines of spring wheat and their corresponding resistance genes of stripe rust. The map positions are indicated on the left-hand side as a percentage of the total length of the chromosomes in the re-scaled distances on the 90 K consensus map (Wang et al., 2014) while the single-nucleotide polymorphism (SNP) markers and Quantitative trait loci (QTLs) are shown in line to the right-hand side of each figure. The genetic map was constructed using MapChart 2.32 software (Voorrips, 2002).

*EWYY2B.2*, *EWYY4B.2*, *EWYY7B.1*, and *EWYY7B.2* were located within less than one-tenth of the chromosome length to previously identified *Pst* resistance genes (Fig. 3, Table 2). The close proximity of these genes to specific QTLs suggests the possibility that these QTLs might represent the same gene, which is essential for breeding programs targeting *Pst* control.

Five known *Pst* resistance genes including *Yr3*, *Yr5*, *Yr43*, *Yr44* and *Yr53* have been identified on the long arm of chromosome 2B within a range of 62.1 % to 86.8 % of chromosome length (Xu et al., 2013; McGrann et al., 2014; Mcintosh et al., 2016). The *Yr43/Yr53* and *Yr3* genes are in close proximity to the currently identified *EWYY2B.2* QTL (142.5 cM, 74.9 %, Table 2). This suggests that the wheat germplasms carrying the *EWYY2B.2* QTL likely harbor at least one of these three genes. Similarly, on chromosome 5B, two known *Pst* resistance genes (*Yr19* and *Yr47*) and a candidate gene (*YrExp2*) have been identified (Mcintosh et al., 2013). In the same chromosome QTL *EWYY5B.1*

positioned from 126.3 cM to 129.2 cM (Table 2) was identified in this study. This QTL is in close proximity to the previously designated partial *Pst* resistance gene *YrExp2*. As such, it is highly likely that this region represents the same genetic locus since no other *Pst* resistance genes have been mapped nearby. Furthermore, on the long arm of chromosome 4B, the QTL *EWYY4B.2* was identified in close proximity to the previously known adult plant resistance gene *Yr62* (Liu et al., 2013).

The chromosome 7B region is known to harbor several *Pst* resistance genes, including five permanently registered ones—*Yr63*, *Yr39*, *Yr67*, *Yr52*, and *Yr59*—along with two temporarily registered *Pst* resistance genes—*YrC591* and *YrZH84* (Lin, 2007; Mcintosh et al., 2013, 2016). The current study identified two adjacent QTLs, *EWYY7B.1* and *EWYY7B.2.1* located at 126.3 cM - 129.2 cM (Table 2), which are in close proximity to the known *Yr39* gene, indicating a strong likelihood of these genes being present in associated wheat germplasms.

Notably, QTL *EWYY7B.1* exhibited the highest average phenotypic

Gen	CI	IWB54284	IWA1543	IWB58816	IWB38584	IWB57902	IWB39827	IWB50896	IWB34834	IWB52695	IWA311	IWA1352	IWA418
RP003	0	GG	TT	TT	AA	GG	GG	AA	GG	TT	TT	TT	TT
RP029	0	GG	TT	TT	AA	GG	GG	AA	GG	TT	TT	TT	CC
RP036	0	GG	TT	TT	AA	GG	GG	AA	GG	TT	TT	TT	TT
RP150	0	GG	TT	TT	AA	GG	GG	AA	GG	TT	TT	TT	CC
RP242	0	GG	TT	TT	AA	GG	GG	AA	GG	TT	TT	TT	CC
RP249	0	GG	TT	TT	AA	GG	GG	AA	GG	TT	TT	TT	CC
RP153	2.5	GG	TT	TT	AA	GG	GG	AA	GG	TT	CC	TT	TT
RP186	2.5	GG	CC	TT	AA	GG	GG	AA	GG	TT	CC	TT	CC
RP013	5	GG	TT	TT	AA	GG	GG	AA	GG	TT	TT	TT	CC
RP108	42.5	AA	CC	CC	GG	AA	AA	GG	AA	CC	CC	CC	CC
RP088	45	AA	CC	CC	GG	AA	AA	GG	AA	CC	TT	CC	CC
RP116	45	GG	TT	CC	GG	AA	AA	GG	AA	CC	CC	CC	CC
RP120	45	GG	TT	TT	AA	GG	GG	AA	GG	TT	TT	TT	TT
RP146	45	AA	CC	CC	GG	AA	AA	GG	AA	CC	CC	CC	CC
RP165	45	GG	CC	TT	AA	GG	GG	AA	GG	TT	CC	TT	CC
RP174	45	AA	CC	CC	GG	AA	AA	GG	AA	CC	CC	CC	CC
RP138	50	AA	CC	CC	GG	AA	AA	GG	AA	CC	TT	CC	CC
RP226	50	GG	TT	TT	AA	GG	GG	AA	GG	TT	TT	TT	TT
RP189	52.5	GG	CC	TT	AA	GG	GG	AA	GG	TT	TT	TT	TT
RP144	60	GG	TT	CC	GG	AA	AA	GG	AA	CC	CC	CC	TT

**Fig. 4.** Allelic distribution of QTL *EWYY7B.1* across twelve snps against stripe rust. A quantitative trait locus (QTL) labelled *EWYY7B.1* across twelve significant SNPs associated with *Pst* resistance in top 10 genotype and top susceptible genotype to stripe rust. Green Cells: Represent resistance genotypes. Red Cells: Represent susceptible genotypes. (For interpretation of the references to colour in this figure legend, the reader is referred to the web version of this article.)

variation, accounting for 7.7 % of the total. Consequently, *EWYY7B.1* was selected to show allelic distribution among the top ten resistant and the top ten susceptible genotypes. The figure illustrates distinct allele frequency patterns, with resistant genotypes predominantly exhibiting resistant alleles (GG, TT, AA), while susceptible genotypes primarily display susceptibility alleles (AA, CC, TT) across the selected SNPs within *EWYY7B.1* (Fig. 4).

#### 4.4. Comparing with previously identified QTLs

The majority of the currently identified QTLs were in close proximity to the previously reported QTLs associated with *Pst* resistance. Three of the ten identified QTLs (*EWYY1B.1*, *EWYY2B.1*, and *EWYY6B.2*) were co-located in previously discovered genomic regions with *Pst* resistance. Specifically, the QTLs *EWYY1B.1* and *EWYY1B.2* are co-located with the locus *QYr.cau1BS\_AQ2478853*, reported by (Quan et al., 2013) at the short arm of chromosome 1B. The other *EWYY2B.1* QTL positioned at 40.6 to 42.7 cM is nearby the previously reported QTL *QYr.ucw2-B\_UC1110* (Lowe et al., 2011) located on 39.8 to 49.1 cM.

#### 4.5. Novel QTLs identified on the current study

This study identified three potentially novel QTLs associated with *Pst* resistance in wheat through a comparative analysis of prior research on *Pst* resistance genes/QTLs. These potentially newly identified QTLs include *EWYY5 A.2* on the short arm of chromosome 5 A, *EWYY6B.1* on the long arm of chromosome 6B, and *EWYY7B.3* on the short arm of chromosome 7B (Table 2).

The QTL *EWYY5 A.2*, comprising three SNPs (*Tdurum\_contig50175\_875*, *BS00041063\_51*, and *Tdurum\_contig10843\_745*), is located on chromosome 5 A at 93.23 cM accounting 6.1 % of the overall phenotypic variation (Table 2). So far, the short arm of chromosome 5 A has only been catalogued with a single *Pst* resistance gene *Yr34* (synonym *Yr48*) located within a distal region (Qureshi et al., 2018). Given the substantial distance between these genes and *EWYY5A.2* (62.7 cM), it is highly likely that this QTL represents a new and previously undiscovered association with *Pst* resistance. The *EWYY6B.1* QTL is located on the long arm of chromosome 6B spanning from 64.0 cM to 71.76 cM. Within this region, *Yr36* (Uauy et al., 2005) is found at positions ranging

from 0 to 25.1 cM. Considering the distance between the gene and our identified QTL, it is highly possible that *EWYY6B.1* could potentially be a novel genetic resource. Similarly, no *Pst* resistance genes/QTL was identified so far nearby to *EWYY7B.3* which is on chromosome arm 7BS at 89.64 cM.

## 5. Conclusions

In this study, we identified several known genes and QTLs associated with resistance to wheat stripe rust disease and discovered three potentially novel genomic regions linked to this resistance. Given the significant global impact of wheat stripe rust outbreaks in recent years, integrating these resistance genes and QTLs into elite breeding lines is a critical strategy to combat this disease effectively. These findings offer valuable insights for wheat breeders, providing a robust foundation for implementing marker-assisted selection to develop durable stripe rust-resistant wheat cultivars. To fully realize the potential of these discoveries, further research is recommended to validate the novel QTLs, ensuring their effective application in breeding programs.

### Ethics approval and consent to participate

Not applicable.

### Consent for publication

Not applicable.

### Availability of data and materials

The SNP dataset used in the current study is available in table S3.

### Funding

This research did not receive any specific grant from funding agencies in the public, commercial, or not-for-profit sector.



## Authors contribution

ES, LM, and WT conceived and designed the study. WT designed the study and provided germplasms and the genotypic data. LM guided the project development. ES wrote the draft manuscript. ES and AA performed data analysis. LM and AA edited the manuscript. All authors read and approved of the final manuscript.

## CRedit authorship contribution statement

**Elias Shewabez:** Writing – original draft, Software, Methodology, Investigation, Formal analysis, Data curation, Conceptualization. **Laura Mugnai:** Writing – review & editing, Supervision, Project administration, Funding acquisition, Conceptualization. **Wuletaw Tadesse:** Writing – review & editing, Resources, Project administration, Funding acquisition. **Admas Alemu:** Writing – review & editing, Supervision, Methodology, Formal analysis, Data curation.

## Declaration of competing interest

The authors declare that they have no competing interests.

## Data availability

No data was used for the research described in the article.

## Acknowledgments

This project is part of The International Center for Agricultural Research in the Dry Areas (ICARDA) shuttle breeding program designed for the development of stripe rust-resistant wheat. The authors acknowledge Kulumsa Agricultural Research Center and the University of Florence for facilitating field experiments.

## Appendix A. Supplementary data

Supplementary data to this article can be found online at <https://doi.org/10.1016/j.plgene.2024.100478>.

## References

- Afzal, A., Syed, S., Nawaz, H.H., Mustafa, R., Aziz, M., Khan, M., Khan, A., Javed, U., Rehman, A.U., Altaf, R., Shakil, Q., 2024. Unraveling the genetic and geographic diversity of *Puccinia striiformis* f. sp. *tritici* (*Pst*) populations for effective control of stripe rust in global wheat production. *Pak. J. Agric. Res.* 37, 88–101. <https://doi.org/10.17582/JOURNAL.PJAR/2024/37.2.88.101>.
- Alemu, A., Feyissa, T., Maccaferri, M., Sciara, G., Tuberosa, R., Ammar, K., Badebo, A., Acevedo, M., Letta, T., Abeyo, B., 2021. Genome-wide association analysis unveils novel QTLs for seminal root system architecture traits in Ethiopian durum wheat. *BMC Genomics* 22. <https://doi.org/10.1186/S12864-020-07320-4>.
- Alemu, A., Åstrand, J., Montesinos-Lopez, O.A., Sanchez, J.I., Fernandez-Gonzalez, J., Tadesse, W., Vetukuri, R.R., Carlsson, A.S., Ceplitis, A., Crossa, J., Ortiz, R., 2024. Genomic selection in plant breeding: key factors shaping two decades of progress. *Mol. Plant.* <https://doi.org/10.1016/j.molp.2024.03.007>.
- Allen, G.C., Flores-Vergara, M.A., Krasnyanski, S., Kumar, S., Thompson, W.F., 2006. A modified protocol for rapid DNA isolation from plant tissues using cetyltrimethylammonium bromide. <https://doi.org/10.1038/nprot.2006.384>.
- Aslake, M., Sintayehu, A., 2022. The current threats of wheat stripe rust (*Puccinia striiformis* f.sp.*tritici*) disease and the consequence for food security in Ethiopia. *Agriculture, Forestry and Fisheries* 11, 29. <https://doi.org/10.11648/J.AFF.20221101.15>.
- Atsbeha, G., Mekonnen, T., Kebede, M., Haileselassie, T., Goodwin, S.B., Tesfaye, K., 2023. Genetic architecture of adult-plant resistance to stripe rust in bread wheat (*Triticum aestivum* L.) association panel. *Front. Plant Sci.* 14. <https://doi.org/10.3389/fpls.2023.1256770>.
- Badebo, A., Bayu, W., 1991. The importance of stripe rust in the major bread wheat producing regions of Ethiopia during 1988-90. *Seventh regional wheat workshop for eastern, central and southern Africa*, Nakuru, Kenya, 16-19 September 1991, 1992. CIMMYT, Mexico DF, Mexico, pp. 37–48, 18 ref.
- Baranwal, D., 2022. Genetic and genomic approaches for breeding rust resistance in wheat. *Euphytica* 218 (11), 1–22. <https://doi.org/10.1007/S10681-022-03111-Y>.
- Bhattacharya, S., 2017. Deadly new wheat disease threatens Europe's crops. *Nature* 542, 145–146. <https://doi.org/10.1038/NATURE.2017.21424>.
- Bhavani, S., Singh, P.K., Qureshi, N., He, X., Biswal, A.K., Juliana, P., Dababat, A., Mourad, A.M.I., 2021. Globally important wheat diseases: status, challenges, breeding and genomic tools to enhance resistance durability. *Genomic Designing for Biotic Stress Resistant Cereal Crops* 59–128. [https://doi.org/10.1007/978-3-030-75879-0\\_2](https://doi.org/10.1007/978-3-030-75879-0_2).
- Bhavani, S., Singh, R.P., Hodson, D.P., Huerta-Espino, J., Randhawa, M.S., 2022. Wheat rusts: current status, prospects of genetic control and integrated approaches to enhance resistance durability. *Wheat Improvement: Food Security in a Changing Climate* 125–141. [https://doi.org/10.1007/978-3-030-90673-3\\_8/FIGURES/3](https://doi.org/10.1007/978-3-030-90673-3_8/FIGURES/3).
- Bouvet, L., Holdgate, S., James, L., Thomas, J., Mackay, I.J., Cockram, J., 2022. The evolving battle between yellow rust and wheat: implications for global food security. *Theor. Appl. Genet.* 135, 741–753. <https://doi.org/10.1007/S00122-021-03983-Z>.
- Chao, S., Dubcovsky, J., Dvorak, J., Luo, M.C., Baenziger, S.P., Matnyazov, R., Clark, D. R., Talbert, L.E., Anderson, J.A., Dreisigacker, S., Glover, K., Chen, J., Campbell, K., Bruckner, P.L., Rudd, J.C., Haley, S., Carver, B.F., Perry, S., Sorrells, M.E., Akhunov, E.D., 2010. Population- and genome-specific patterns of linkage disequilibrium and SNP variation in spring and winter wheat (*Triticum aestivum* L.). *BMC Genomics* 11, 727. <https://doi.org/10.1186/1471-2164-11-727>.
- Chaurasia, S., Singh, A.K., Kumar, A., Songachan, L.S., Yadav, M.C., Kumar, S., Kumari, J., Bansal, R., Sharma, P.C., Singh, K., 2021. Genome-wide association mapping reveals key genomic regions for physiological and yield-related traits under salinity stress in wheat (*Triticum aestivum* L.). *Genomics* 113, 3198–3215. <https://doi.org/10.1016/J.YGENO.2021.07.014>.
- Chen, W., Wellings, C., Chen, X., Kang, Z., Liu, T., 2014. Wheat stripe (yellow) rust caused by *Puccinia striiformis* f. sp. *tritici*. *Mol. Plant Pathol.* 15, 433–446. <https://doi.org/10.1111/mpp.12116>.
- Crossa, J., Burguño, J., Dreisigacker, S., Vargas, M., Herrera-Foessel, S.A., Lillemo, M., Singh, R.P., Trethowan, R., Warburton, M., Franco, J., Reynolds, M., Crouch, J.H., Ortiz, R., 2007. Association analysis of historical bread wheat germplasm using additive genetic covariance of relatives and population structure. *Genetics* 177, 1889–1913. <https://doi.org/10.1534/genetics.107.078659>.
- Dawana, D., Dessie, B., Kebede, M., Shimelash, D., 2024. Pathogenicity of *Puccinia striiformis* f. sp. *tritici* and quantitative traits on bread wheat landraces in Ethiopia. *Crop. Sci.* 64, 651–666. <https://doi.org/10.1002/CSC2.21187>.
- El Messoadi, K., El Hanafi, S., El Gataa, Z., Kehel, Z., Bouhouch, Y., Tadesse, W., 2022. Genome wide association study for stripe rust resistance in spring bread wheat (*Triticum aestivum* L.). *J. Plant Pathol.* 104, 1049–1059. <https://doi.org/10.1007/s42161-022-01132-z>.
- El Solh, M., 2012. The growing threat of stripe rust worldwide. <https://bgri.cornell.edu/wp-content/uploads/2022/02/BGRI-2012-plenary-sm.pdf#page=4>.
- Gebre-Mariam, H., Tanner, D.G., Hulluka, M., Gebre-Mariam, H., Beyene, H., Mwangi, W., Habtemariam, G., Belay, G., Haile, A., 1991. *Wheat Research in Ethiopia: A Historical Perspective*.
- Hadis, L.T., 2019. Current status of wheat stem rust (*Puccinia graminis* f. sp. *tritici*) and reactions of genotypes to predominant races in arsi and bale zones of oromia, ethiopia.
- Jamil, S., Shahzad, R., Ahmad, S., Fatima, R., Zahid, R., Anwar, M., Iqbal, M.Z., Wang, X., 2020. Role of genetics, genomics, and breeding approaches to combat stripe rust of wheat. *Front. Nutr.* <https://doi.org/10.3389/fnut.2020.580715>.
- Khanfri, S., Boulif, M., Lahlali, R., 2018. Yellow rust (*Puccinia striiformis*): a serious threat to wheat production worldwide. *Not Sci Biol* 10, 410–423. <https://doi.org/10.15835/NSB10310287>.
- Kumar, P., Kumar, A., Chhokar, V., Gangwar, O.P., Bhardwaj, S.C., Sivasamy, M., Prasad, S.V.S., Prakasha, T.L., Khan, H., Singh, R., Sharma, P., Sheoran, S., Iqbal, M.A., Jaiswal, S., Angadi, U.B., Singh, G., Rai, A., Singh, G.P., Kumar, Dinesh, Tiwari, R., 2020. Genome-wide association studies in diverse spring wheat panel for stripe, stem, and leaf rust resistance. *Front. Plant Sci.* 11, 541017. <https://doi.org/10.3389/FPLS.2020.00748>.
- Kumar, S., Saini, D.K., Jan, F., Jan, S., Tahir, M., Djalovic, I., Latkovic, D., Khan, M.A., Kumar, S., Vikas, V.K., Kumar, U., Sundip, D., Dhankher, O.P., Rustgi, S., Mir, R.R., 2023. Comprehensive meta-QTL analysis for dissecting the genetic architecture of stripe rust resistance in bread wheat. *BMC Genomics* 24, 1–19. <https://doi.org/10.1186/S12864-023-09336-Y/TABLES/2>.
- Li, J., Jiang, Y., Yao, F., Long, L., Wang, Y., Wu, Y., Li, H., Wang, J., Jiang, Q., Kang, H., Li, W., Qi, P., Ma, J., Pu, Z., Dai, S., Wei, Y., Zheng, Y., Chen, G., 2020a. Genome-wide association study reveals the genetic architecture of stripe rust resistance at the adult plant stage in Chinese endemic wheat. *Front. Plant Sci.* 11. <https://doi.org/10.3389/FPLS.2020.00625>.
- Li, J., Jiang, Y., Yao, F., Long, L., Wang, Y., Wu, Y., Li, H., Wang, J., Jiang, Q., Kang, H., Li, W., Qi, P., Ma, J., Pu, Z., Dai, S., Wei, Y., Zheng, Y., Chen, G., 2020b. Genome-wide association study reveals the genetic architecture of stripe rust resistance at the adult plant stage in Chinese endemic wheat. *Front. Plant Sci.* 11. <https://doi.org/10.3389/FPLS.2020.00625>.
- Li, Y., Dai, J., Zhang, T., Wang, B., Zhang, S., Wang, C., Zhang, J., Yao, Q., Li, M., Li, C., Peng, Y., Cao, S., Zhan, G., Tao, F., Gao, H., Huang, W., Feng, X., Bai, Y., Qucuo, Z., Shang, H., Huang, C., Liu, W., Zhan, J., Xu, X., Chen, X., Kang, Z., Hu, X., 2023. Genomic analysis, trajectory tracking, and field surveys reveal sources and long-distance dispersal routes of wheat stripe rust pathogen in China. *Plant Commun* 4. <https://doi.org/10.1016/J.XPLC.2023.100563>.
- Lin, F., Chen, X.M., 2007. Genetics and molecular mapping of genes for race-specific adult-plant resistance and non-race-specific high-temperature adult-plant resistance to stripe rust in spring wheat cultivar Alpowa. *Theor. Appl. Genet.* 114, 1277–1287. <https://doi.org/10.1007/s00122-007-0518-0>.
- Liu, J., Chang, Z., Zhang, X., Yang, Z., Li, X., Jia, J., Zhan, H., Guo, H., Wang, J., 2013. Putative *Thinopyrum* intermedium-derived stripe rust resistance gene Yr50 maps on

- wheat chromosome arm 4BL. *Theor. Appl. Genet.* 126, 265–274. <https://doi.org/10.1007/S00122-012-1979-3>.
- Lu, Y., Wang, M., Chen, X., See, D., Chao, S., Jing, J., 2014. Mapping of Yr62 and a small-effect QTL for high-temperature adult-plant resistance to stripe rust in spring wheat PI 192252. *Theor. Appl. Genet.* 127, 1449–1459. <https://doi.org/10.1007/s00122-014-2312-0>.
- Lukaszewski, A.J., 2000. Manipulation of the 1RS.1BL translocation in wheat by induced homoeologous recombination. *Crop. Sci.* 40, 216–225. <https://doi.org/10.2135/CROPSCI2000.401216X>.
- Maccaferri, M., Zhang, J., Bulli, P., Abate, Z., Chao, S., Cantu, D., Bossolini, E., Chen, X., Pumphrey, M., Dubcovsky, J., 2015. A genome-wide association study of resistance to stripe rust (*Puccinia striiformis* f. sp. *tritici*) in a worldwide collection of hexaploid spring wheat (*Triticum aestivum* L.). *G3: genes, Genomes, Genetics* 5, 449–465. <https://doi.org/10.1534/g3.114.014563>.
- Mapuranga, J., Zhang, N., Zhang, L., Chang, J., Yang, W., 2022. Infection strategies and pathogenicity of biotrophic fungal pathogens. *Front. Microbiol.* 13, 1668. <https://doi.org/10.3389/FMICB.2022.799396>.
- Markell, S.G., Milus, E.A., 2008. Population biology emergence of a novel population of *Puccinia striiformis* f. sp. *tritici* in eastern United States. <https://doi.org/10.1094/PHYTO-98-6-0632>.
- Mathew, I., Shimelis, H., Shayanowako, A.I.T., Laing, M., Chaplot, V., 2019. Genome-wide association study of drought tolerance and biomass allocation in wheat. *PLoS One* 14, e0225383. <https://doi.org/10.1371/JOURNAL.PONE.0225383>.
- McGrann, G., Smith, P., Burt, C., Mateos, G., Chama, T., MacCormack, R., Wessels, E., Agenbag, G., Boyd, L., 2014. Genomic and genetic analysis of the wheat race-specific yellow rust resistance gene Yr5. *Journal of Plant Science & Molecular Breeding* 3, 2. <https://doi.org/10.7243/2050-2389-3-2>.
- McIntosh, R.A., Dubcovsky, J., Rogers, W.J., Morris, C., Appels, R., Xia, X.C., 2013. Catalogue of gene symbols for wheat: 2013-2014 supplement.
- McIntosh, R.A., Dubcovsky, J., Rogers, J., Morris, C., Appels, R., et al., 2016. Catalogue of gene symbols for wheat: 2015-2016 Supplement.
- Mekonnen, M.A., Emirie, G.A., Mekonnen, M.B., Alemayehu, Y., Baye, A., Mihretie, A., Bacha, N., Gutu, K., 2024. Unveiling wheat rust epidemics: a long-term surveillance study in Ethiopia's Northwestern Amhara region. *J. Phytopathol.* 172. <https://doi.org/10.1111/JPH.13360>.
- Meyer, M., Bacha, N., Tesfaye, T., Alemayehu, Y., Abera, E., Hundie, B., Woldeab, G., Girma, B., Gemechu, A., Negash, T., Mideksa, T., Smith, J., Jaleta, M., Hodson, D., Gilligan, C.A., 2021. Wheat rust epidemics damage Ethiopian wheat production: a decade of field disease surveillance reveals national-scale trends in past outbreaks. *PLoS One* 16, e0245697. <https://doi.org/10.1371/JOURNAL.PONE.0245697>.
- Milus, E.A., Kristensen, K., Hovmöller, M.S., 2009. Ecology and Epidemiology Evidence for Increased Aggressiveness in a Recent Widespread Strain of *Puccinia striiformis* f. sp. *tritici* Causing Stripe Rust of Wheat, 99, p. 89. <https://doi.org/10.1094/PHYTO-99-1-0089>.
- Morales, L., Michel, S., Ametz, C., Dallinger, H.G., Löschenberger, F., Neumayer, A., Zimmer, S., Buerstmayr, H., 2021. Genomic signatures of selection for resistance to stripe rust in Austrian winter wheat. *Theor. Appl. Genet.* 134, 3111–3121. <https://doi.org/10.1007/S00122-021-03882-3/FIGURES/3>.
- Mu, J., Liu, L., Liu, Y., Wang, M., See, D.R., Han, D., Chen, X., 2020. Genome-wide association study and gene specific markers identified 51 genes or QTL for resistance to stripe rust in U.S. winter wheat cultivars and breeding lines. *Front. Plant Sci.* 11. <https://doi.org/10.3389/FPLS.2020.00998>.
- Muleta, K.T., Rouse, M.N., Rynearson, S., Chen, X., Buta, B.G., Pumphrey, M.O., 2017a. Characterization of molecular diversity and genome-wide mapping of loci associated with resistance to stripe rust and stem rust in Ethiopian bread wheat accessions. *BMC Plant Biol.* 17, 1–20. <https://doi.org/10.1186/S12870-017-1082-7>.
- Muleta, K.T., Rouse, M.N., Rynearson, S., Chen, X., Buta, B.G., Pumphrey, M.O., 2017b. Characterization of molecular diversity and genome-wide mapping of loci associated with resistance to stripe rust and stem rust in Ethiopian bread wheat accessions. *BMC Plant Biol.* 17, 1–20. <https://doi.org/10.1186/S12870-017-1082-7/FIGURES/7>.
- Ogbonnaya, F.C., Rasheed, A., Okechukwu, E.C., Jighly, A., Makdis, F., Wuletaw, T., Hagra, A., Uguru, M.L., Agbo, C.U., Ogbonnaya Francis Ogbonnaya, F.C., 2017. Genome-wide association study for agronomic and physiological traits in spring wheat evaluated in a range of heat prone environments. *Theor. Appl. Genet.* 130, 1819–1835. <https://doi.org/10.1007/s00122-017-2927-z>.
- Patpour, M., Hovmöller, M.S., Justesen, A.F., Newcomb, M., Olivera, P., Jin, Y., Szabo, L. J., Hodson, D., Shahin, A.A., Wanyera, R., Habarurema, I., Wobibi, S., 2016. Emergence of virulence to *SrTmnp* in the Ug99 race group of wheat stem rust, *Puccinia graminis* f. sp. *tritici*, in Africa. *Plant Dis.* 100, 522. <https://doi.org/10.1094/PDIS-06-15-0668-PDN>.
- Peterson, R.F., Campbell, A.B., Hannah, A.E., 2011. A diagrammatic scale for estimating rust intensity on leaves and stems of cereals, 26c, pp. 496–500. <https://doi.org/10.1139/CJR48C-033>.
- Qiao, L., Luo, J., Wang, H., Kong, Y., Du, T., Qin, P., Yang, B., 2024. Integrated genome-wide association and transcriptomic analysis to identify receptor kinase genes to stripe rust resistance in wheat germplasm from southwestern China. *BMC Plant Biol.* 24. <https://doi.org/10.1186/S12870-024-05020-9>.
- Quan, W., Hou, G., Chen, J., Du, Z., Lin, F., Guo, Y., Liu, S., Zhang, Z., 2013. Mapping of QTL lengthening the latent period of *Puccinia striiformis* in winter wheat at the tillering growth stage. *Eur. J. Plant Pathol.* 136, 715–727. <https://doi.org/10.1007/S10658-013-0201-Z>.
- Qureshi, N., Bariana, H.S., Zhang, P., McIntosh, R., Bansal, U.K., Wong, D., Hayden, M.J., 2018. Genetic Relationship of Stripe Rust Resistance Genes *Yr34* and *Yr48* in Wheat and Identification of Linked KASP Markers. <https://doi.org/10.1094/PDIS-08-17-1144-RE>.
- Rahman, M., Davies, P., Bansal, U., Pasam, R., Hayden, M., Trethowan, R., 2020. Marker-assisted recurrent selection improves the crown rot resistance of bread wheat. *Mol. Breed.* 40. <https://doi.org/10.1007/S11032-020-1105-1>.
- Saini, D.K., Chopra, Y., Singh, J., Sandhu, K.S., Kumar, A., Bazzar, S., Srivastava, P., 2022. Comprehensive evaluation of mapping complex traits in wheat using genome-wide association studies. *Mol. Breed.* 42. <https://doi.org/10.1007/S11032-021-01272-7>.
- Savary, S., Willcoquet, L., Pethybridge, S.J., Esker, P., McRoberts, N., Nelson, A., 2019. The global burden of pathogens and pests on major food crops. *Nature Ecology & Evolution* 3 (3), 430–439. <https://doi.org/10.1038/s41559-018-0793-y>.
- Schwessinger, B., Chen, Y.-J., Tien, R., Vogt, J.K., Sperschneider, J., Nagar, R., McMullan, M., Sicheritz-Ponten, T., Sørensen, C.K., Hovmöller, M.S., Rathjen, J.P., Justesen, A.F., 2019. Distinct life histories impact dikaryotic genome evolution in the rust fungus *Puccinia striiformis* causing stripe rust in wheat. *bioRxiv* 859728. <https://doi.org/10.1101/859728>.
- Shahin, A.A., 2020. Occurrence of new races and virulence changes of the wheat stripe rust pathogen (*Puccinia striiformis* f. sp. *tritici*) in Egypt. *Arch. Phytopathol. Plant Protect.* 53, 552–569. <https://doi.org/10.1080/03235408.2020.1767330> Shahin, A. A.
- Shahin, A.A., Omara, R.I., Omar, H.A., El-Din, H.S., Sehsah, M.D., Essa, T., Zayton, M.A., Omar, H.S., 2024. Evaluation of effectiveness resistance genes in wheat genotypes using marker-assisted selection for stripe rust resistance breeding. *BMC Plant Biol.* 24, 1–24. <https://doi.org/10.1186/S12870-024-05470-1/TABLES/11>.
- Sharma, R.C., Nazari, K., Amanov, A., Ziyaev, Z., Jalilov, A.U., 2016. Reduction of winter wheat yield losses caused by stripe rust through fungicide management. *J. Phytopathol.* 164, 671–677. <https://doi.org/10.1111/JPH.12490>.
- Shewabaz, E., Bekele, E., Alemu, A., Mugnai, L., Tadesse, W., 2022. Genetic characterization and genome-wide association mapping for stem rust resistance in spring bread wheat. *BMC Genom Data* 23, 1–15. <https://doi.org/10.1186/S12863-022-01030-4>.
- Tadesse, W., Halila, H., Jamal, M., El-Hanafi, S., Assefa, S., Oweis, T., Baum, M., 2017. Role of sustainable wheat production to ensure food security in the CWANA region. *Journal of Experimental Biology and Agricultural Sci* 5, 15–32. [10.18006/2017.5\(Spl-1-SAFSAW\).S15.S32](https://doi.org/10.18006/2017.5(Spl-1-SAFSAW).S15.S32).
- Tolemariam, A., Jaleta, M., Hodson, D., Yirga, C., Abeyo, B., 2018. Rust Resistant Wheat Varieties in Ethiopia from 2009/10 to 2013/14.
- Uauy, C., Brevis, J.C., Chen, X., Khan, I., Jackson, L., Chicaiza, O., Distelfeld, A., Fahima, T., Dubcovsky, J., 2005. High-temperature adult-plant (HTAP) stripe rust resistance gene *Yr36* from *Triticum turgidum* ssp. *dicoccoides* is closely linked to the grain protein content locus *Gpc-B1*. *Theor. Appl. Genet.* 112, 97–105. <https://doi.org/10.1007/S00122-005-0109-X>.
- Voorrips, R.E., 2002. MapChart: software for the graphical presentation of linkage maps and QTLs. *J. Hered.* 93, 77–78. <https://doi.org/10.1093/JHERED/93.1.77>.
- Wan, A., 2010. Virulence Characterization of *Puccinia striiformis* f. sp. *tritici* Using a New Set of Yr Single-Gene Line Differentials in the United States in 2010. <https://doi.org/10.1094/PDIS-01-14-0071-RE>.
- Wang, S., Wong, D., Forrest, K., Allen, A., Chao, S., Huang, B.E., Maccaferri, M., Salvi, S., Milner, S.G., Cattivelli, L., Mastrangelo, A.M., Whan, A., Stephen, S., Barker, G., Wieseke, R., Plieske, J., Lillemo, M., Mather, D., Appels, R., Dolferus, R., Brown-Guedira, G., Korol, A., Akhunova, A.R., Feuillet, C., Salse, J., Morgante, M., Pozniak, C., Luo, M.C., Dvorak, J., Morell, M., Dubcovsky, J., Ganai, M., Tuberosa, R., Lawley, C., Mikoulitch, I., Cavanagh, C., Edwards, K.J., Hayden, M., Akhunov, E., 2014. Characterization of polyploid wheat genomic diversity using a high-density 90,000 single nucleotide polymorphism array. *Plant Biotechnol. J.* 12, 787–796. <https://doi.org/10.1111/PBI.12183>.
- Ward, B.P., Brown-Guedira, G., Kolb, F.L., Van Sanford, D.A., Tyagi, P., Sneller, C.H., Griffey, C.A., 2019. Genome-wide association studies for yield-related traits in soft red winter wheat grown in Virginia. *PLoS One* 14, e0208217. <https://doi.org/10.1371/JOURNAL.PONE.0208217>.
- Wellings, C.R., 2007. *Puccinia striiformis* in Australia: a review of the incursion, evolution, and adaptation of stripe rust in the period 1979-2006. *Aust. J. Agr. Res.* 58, 567–575. <https://doi.org/10.1071/AR07130>.
- Wu, J., Yu, R., Wang, H., Zhou, C., Huang, S., Jiao, H., Yu, S., Nie, X., Wang, Q., Liu, S., Weining, S., Singh, R.P., Bhavani, S., Kang, Z., Han, D., Zeng, Q., 2021. A large-scale genomic association analysis identifies the candidate causal genes conferring stripe rust resistance under multiple field environments. *Plant Biotechnol. J.* 19, 177–191. <https://doi.org/10.1111/PBI.13452>.
- Xu, L.S., Wang, M.N., Cheng, P., Kang, Z.S., Hulbert, S.H., Chen, X.M., 2013. Molecular mapping of *Yr53*, a new gene for stripe rust resistance in durum wheat accession PI 480148 and its transfer to common wheat. *Theor. Appl. Genet.* 126, 523–533. <https://doi.org/10.1007/s00122-012-1998-0>.
- Zegeye, H., Rasheed, A., Makdis, F., Badebo, A., Ogbonnaya, F.C., 2014a. Genome-wide association mapping for seedling and adult plant resistance to stripe rust in synthetic Hexaploid wheat. *PLoS One* 9, e105593. <https://doi.org/10.1371/JOURNAL.PONE.0105593>.
- Zegeye, H., Rasheed, A., Makdis, F., Badebo, A., Ogbonnaya, F.C., 2014b. Genome-wide association mapping for seedling and adult plant resistance to stripe rust in synthetic Hexaploid wheat. *PLoS One* 9, e105593. <https://doi.org/10.1371/JOURNAL.PONE.0105593>.
- Zhang, N., Liao, Z., Wu, S., Nobis, M.P., Wang, J., Wu, N., 2022. Impact of climate change on wheat security through an alternate host of stripe rust. *Food Energy Secur* 11, e356. <https://doi.org/10.1002/FES3.356>.
- Župunski, V., Savva, L., Saunders, D.G.O., Jevtić, R., 2024. A recent shift in the *Puccinia striiformis* f. sp. *tritici* population in Serbia coincides with changes in yield losses of commercial winter wheat varieties. *Front. Plant Sci.* 15, 1464454. <https://doi.org/10.3389/FPLS.2024.1464454>.