



Swedish University of Agricultural Sciences
Faculty of Forest Sciences
Umeå, Sweden

A Method for Natural Regeneration of Beech (*Fagus sylvatica* L.) practiced in Southern Sweden

ROLF ÖVERGAARD, ERIC AGESTAM & PER-MAGNUS EKÖ
SLU, Southern Swedish Forest Research Centre, Alnarp

ULF JOHANSSON
SLU, Unit for Field-based Forest Research, Tönnersjöheden and Skarhult
Experimental Forests

Studia Forestalia Suecica
No. 218 • 2009

ISSN 0039-3150
ISBN 978-91-86197-41-4

Abstract

Övergaard, R., Agestam, E., Ekö, P-M. and Johansson, U., 2009. A Method for Natural Regeneration of Beech (*Fagus sylvatica* L.) practiced in Southern Sweden. *Studia Forestalia Suecia* 218. 30 pp. ISSN 0039-3150, ISBN 978-91-86197-41-4.

In Sweden the most common way to regenerate beech forests is intensive natural regeneration combined with site preparation. However, the method has both economic and ecological drawbacks. On a large estate in southern Sweden a more non-intensive regeneration method is practised. Several cautious cuttings regulate the forest floor conditions as well as the development of new seedlings originating from mast years occurring under a longer period. The aim of this study was to document this method and to study its regeneration dynamics. The seedling density recorded in the later phases of the regeneration period is considered to be sufficient for the development of new stands.

Key words: plant dynamics, pre-commercial thinning, regeneration-phase, regeneration quality, sapling, seed-fall, seed-tree, shelter-wood, site conditions, seedling establishment.

Corresponding author: Rolf Övergaard, Southern Swedish Forest Research Centre, Swedish University of Agricultural Sciences (SLU), P.O. Box 49, S-230 53 Alnarp, Sweden.

E-mail: Rolf.Overgaard@ess.slu.se

Telephone : +46 40 41 5189

Fax : +46 40 46 23 25

Contents

Introduction, 3

Materials & methods, 4

Seed-fall, 5

Seedlings, 5

Field vegetation, 7

Pre-commercial thinnings, 7

Potential quality of the new stand, 7

Shelter-wood trees, 7

Analysis, 7

Results, 9

Seed-fall, 9

Seedlings, 9

Seedling/seed ratio, 11

Seedlings of species other than beech, 11

Height and height growth, 13

Influence of shelter-wood density, 13

Quality – potential crop trees and wolf trees, 13

Field vegetation, 13

Shelter, 14

Discussion, 14

Seed-fall, 14

Seed-fall before the study period, 15

Important factors affecting the number of seedlings, 15

Number of seedlings, 15

The early regeneration-phase stands, 15

The intermediate regeneration-phase stands, 16

The late regeneration-phase stands, 16

Seedling distribution, 16

Advance regeneration, 17

A comparison with the traditional approach, 17

Seedling/seed ratio, 17

Height and height growth, 17

Initial stem quality, 18

Length of the regeneration period, 18

Other species, 18

Conclusions, 18

References, 18

Acknowledgements, 19

Photo appendix, 20

Ms. received 7 November 2008

Revised ms. accepted 10 July 2009

Introduction

Traditional natural regeneration of beech is a common method for the regeneration of beech stands in Sweden and Denmark (Almgren et al. 1984, Henriksen 1996, Agestam et al. 2003) and in many European countries. The method can be summarized as follows:

- The forest manager awaits a mast year. On average in Southern Sweden this occurs every second or third year (Övergaard et al. 2007), however intervals are affected by the weather conditions.
- Site preparation is undertaken in late summer or early autumn in the mast year. After the seed fall it is recommended that the beech nuts are covered with mineral soil by superficial soil preparation.
- Heavy cutting is undertaken the following winter, removing c. 50 % of the canopy trees.
- The shelter-wood is gradually removed over a 10-30 year period, involving two or three cuttings.

Variations in the programme occur; a preparatory cutting is sometimes undertaken to stimulate seed production (Dengler 1972), especially in unmanaged stands. Some managers also prefer to wait for new seedlings to establish before significantly reducing the density of shelter trees. However, this may be a risk especially on poor sites where the competition from the shelter-trees is high.

The type and intensity of site preparation varies. The purpose is to facilitate the conditions for germination, establishment and early growth. Bare mineral soil mostly gives the best results (Madsen 1995). Field vegetation, competing for water, nutrients and light, is removed, the capillary force of the mineral soil brings water, soil temperature is increased and attacks of fungus are reduced. The disadvantage is that the seeds are easily found by different predators, but covering the seeds with soil will decrease the damage. Also the ectomycorrhizae composition is negatively influenced by removing the humus layer (Lazaruk et al. 2008). In areas where seed-eating and/or browsing animals are present, or the field-layer is thick and abundant, or the forest manager of other reasons expect low germination rate or high mortality in the new generation, big areas of bare mineral soil is needed. An intense site preparation method has to be chosen and the purpose is to get as many seedlings as possible.

When these big amounts of seedlings are not needed a disc-trencher or patch-scarifier is often used. This machinery creates rows or patches of bare mineral soil and in these often big quantities of seedlings appear while the number is much lower in the undisturbed parts of the regeneration area (Agestam et al. 2003). After seed-fall the beechnuts should be covered with mineral soil to enhance the overwintering and germination of the seeds and to protect them from predation (Watt 1923, Huss and Burschel 1972). A less intense method is to use a rotary cultivator before the seed-fall, mixing the organic layer and the mineral soil to a depth of 5-10 cm. A second cultivation should be done after the seed-fall, but not deeper than 5 cm. A third way is to use the rotary cultivator only after the seed-fall and lightly mix the surface not deeper than 5 cm. Olesen and Madsen (2008) have in a study showed results in fenced areas of 160 germinates m⁻² in bare mineral soil, 100 germinates m⁻² in the intensively cultivated seedbed, and 40 germinates m⁻² in the lightly cultivated seedbed, compared to 5 germinates m⁻² in the untreated plots.

The intensive method is widely implemented by foresters and in most cases yields good results, although failures do occur. Nielsen (1977) found the pre-dispersal predation of seeds due to the beech seed moth *Cydia fagiglandana* varies from 7 to 55 % of the seed crop. A winter without the protection of snow cover provides opportunities for seed predators, including mammals and birds, to consume large quantities of seed (Harmer 1994). Big flocks of brambling (*Fringilla montifringilla*) can consume huge amounts of beechnuts during winter (Lithner 2002). Linnard (1987) found 40 % of the seeds disappeared within one month after seed fall, and by March less than 3 % of the original seeds remained. During the years after germination, the number of seedlings is often reduced by voles, field mice and other mammals (Harmer 1994, Ravn et al. 2001) and in areas of high roe deer population fencing may be a way to regeneration success. Olesen and Madsen (2008) reported roe deer (*Capreolus capreolus*) browsing significantly decrease the number of newly germinated beech seedlings in bare mineral soil and also height growth was negatively influenced. In a German investigation about 60% of the germinates disappeared during the two first weeks after germination (Bressemer 1998). Drought during spring and early summer will adversely affect germination and kill many seedlings. This is especially common

on poor and acid sites, with a thick humus layer (Brown 1960). Acid soil also has a direct negative impact on germination. (Röhrig et al. 1978).

The main drawbacks discussed with the intensive method are:

- Intensive site preparation is often believed to have a negative impact on biodiversity, recreation potential, and historical and cultural remains. Site preparation may also be difficult to carry out on sites with steep slopes or sites with abundant boulders.
- A drop in timber prices can be expected if too large amounts of timber are harvested during most years.
- Long-term planning is difficult due to the irregularity of most years.
- If a regeneration attempt ends in failure, a second attempt will be more difficult due to competition from grasses and herbs on the site. There may be a lack of seed due to an uneven seed-tree distribution.
- A rising water table and sun exposure often cause damage to shelter-wood trees. There is also a risk of epicormic branches developing on high quality trees.
- The possibilities for maximizing the value of the old stand are limited since not all trees will reach the target diameters.
- Site preparation involves an additional cost.

Sometimes abundant beech regeneration appears in gaps without any silvicultural measures (Bjerregaard and Carbonnier 1979). It is often questioned if advance growth can be used and whether the regeneration result is depending on site conditions (Collet et al. 2002). However, on some estates in Southern Sweden a regeneration method is employed, where the establishment of the new generation is less controlled than in the traditional method.

In the studied method the regeneration is not related to a special mast year but could be started at any time of the period. The regeneration will originate from several mast years and from limited seed-falls during intermediate years. When a well-managed mature stand has reached an age of 80-100 years, depending on site fertility, the stand is subjected to a preparatory cutting in order to achieve better soil conditions and to stimulate seed production. This is

made without any consideration to advance regeneration. The change in light conditions should provide enough light for the establishment of new seedlings but should still inhibit the growth of competing field vegetation. By successive light-regulating cuttings, the most valuable trees close to their target diameters can be favoured. Other measures to stimulate the regeneration are undertaken only in exceptional cases e.g. site preparation could be carried out if a thick grass cover has established. At least 10-15 years will often be needed for the new generation to establish and to dominate the field vegetation. On poor sites particularly, the time span may be longer since factors such as a thick, inactive organic layer, a low nutrient content or a low pH often inhibit seedling establishment. The spatial distribution of seedlings will be heterogeneous, with a considerable variation in height. An early pre-commercial thinning operation is, therefore, often needed. Similar non-intensive methods are used in Denmark (Bornebuch 1947, Henriksen and Bryndum 1996) and northern France (Evans 1982).

The studied method is associated with fewer of the disadvantages of the intensive method, listed above. However, regeneration is expected to be more uncertain. In Denmark the method has produced good results on high fertility sites (Henriksen and Bryndum 1996).

The aim of this study was to document the beech regeneration method and to study the dynamics of the seedling establishment. The hypotheses were:

- The method results in generally good regeneration.
- The abundance of seedlings in the new generation is dependant on the site fertility.
- The seedlings in the new generation will originate from several mast years.

Materials & methods

The study started in 1992 on a forest estate in Southern Sweden (56° 09'2 N; 14° 32'2 E), (Figure 1), where the method has been practised for many years. The climate conditions were favourable for growing beech, with an annual mean precipitation of 578 mm, precipitation during the growing season (April-Sept.) 300 mm, an average temperature of 7.1° C, a lowest average for a month in January of -1.1° C and highest in July of 16.2° C. The temperature sum (threshold value 5° C)

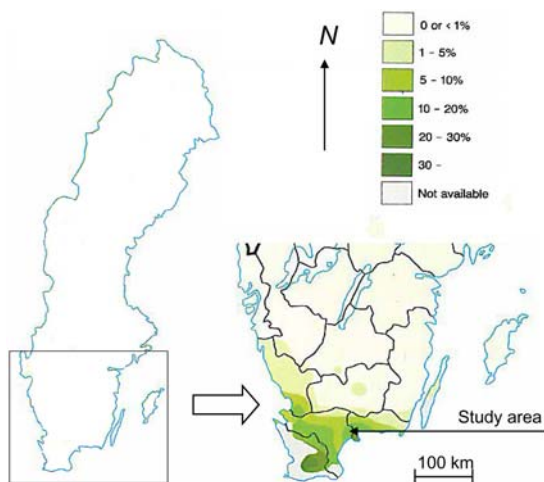


Figure 1. Location of the study area in southern Sweden and the percent in beech of all tree species (Kempe and von Segebaden, 1990).

was 1 650 day degrees (SMHI). The highest altitude in the area was 150 m a. s. l., with small parts of the area located above the highest sea level during the latest glacial period.

Seven stands in different site index classes and regeneration phases were selected for the study. Three stands were chosen from the early regeneration phase (E-stands), two from the intermediate phase (I-stands) and two from the late phase (L-stands). According to the site's forest management plan, site indices, i.e. the top height at a total stand age of 100 years (Kallstenius,

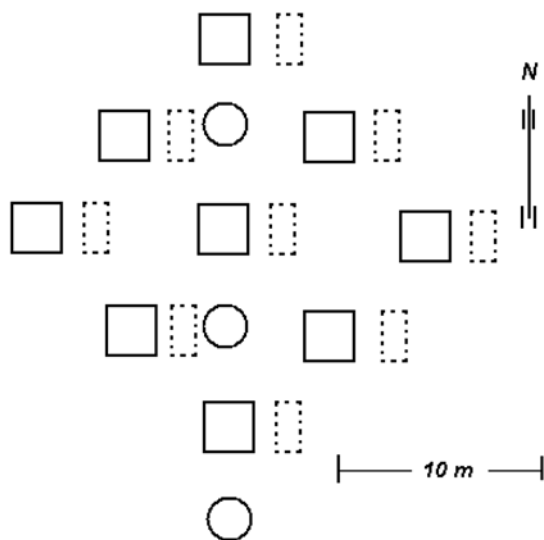


Figure 2. Sample area. Circle: seed-trap. Square: subplot for seedling measurements. Rectangle (dotted line): example of subplots for vegetation harvest. The shelter-wood was measured in a circle of 25 m radius with its centre in the middle seed trap.

1971), varied between 22 and 30 m (Table 1). The stands were grouped into three site index classes; L (low), M (medium) and H (high), (Table 1). Silvicultural treatments, i.e. pre-commercial thinning and cuttings in the shelter-wood, were selected and carried out by the local forester. The two late regeneration-phase stands (LL and LH), had an acceptable level of regeneration in 2002 and 2000 respectively when the last shelter trees were cut. In stand EH and IH the last shelter-wood trees were cut in 2006.

Four sample areas were randomly selected in each stand. Within a radius of 25 meter different measurement were done in systematic design and with different plot sizes (Figure 2). Seed-fall, seed germination, seedling establishment and growth, field vegetation biomass and shelter-wood stand growth and cuttings were studied.

Seed fall

Three circular nylon seed traps (size 0.25 m²) were systematically placed in each sample area (Figure 2), giving a total of 12 traps in every stand. Every year, the traps were emptied at the end of December. Seed data from damaged traps were not used when compiling the results. Years with a seed fall of more than 50 seeds m⁻², which according to Henriksen (1988) is considered the lowest number of seeds required to establish a new stand of good quality, were defined here as mast years.

Seedlings

Seedlings of all tree species were measured every year, after the growing season, in nine 1 m² subplots arranged around the centre of each sample area (Figure 2), giving a total of 36 subplots in every stand. A frame divided into 16 subsections (25 × 25 cm) was used for seedling measurement. The frame was fixed to the ground by two plastic sticks through holes in the frame and into two metallic pipes driven down into the ground. When the study started, all existing beech seedlings, i.e. the advance regeneration established before the investigation started, in the frame were labeled, and the one situated in the most northerly position in each subsection was numbered and its height measured every year. In the same way, new seedlings were numbered and measured every year and every new cohort was marked with a label of a new colour. If possible, the cause of mortality or injury was noted as well as the vitality of the seedlings. Seedlings of other tree species were measured in the same way, but not labeled.

Table 1. *Site Index and regeneration phase of the seven stands studied. Stand parameters of the initial stands, stands before and after cuttings, and stands at the end of the investigation period together with mean annual volume growth for the study period. Diameter corresponding to mean basal area*

Stand	Regeneration phase	Site index	Year	Initial stands and before cuttings			Cuttings			Stands after cuttings and in the end of the study period ²			1993-2005 Volume growth m ³ ha ⁻¹
				Stems ha ⁻¹	Mean diam., cm	Volume m ³ ha ⁻¹	Stems ha ⁻¹	Mean diam., cm	Volume m ³ ha ⁻¹	Stems ha ⁻¹	Mean diam., cm	Volume m ³ ha ⁻¹	
EL	Early	Low < F 24	1993	190	36.0	201							
			2000	190	38.3	236	25	34.4	26	164	38.9	210	
			2005							164	41.6	254	6.6
EM	Early	Medium ~ F 24	1993	152	41.9	246							
			1998	152	43.2	267	36	43.2	66	113	43.2	201	
			2005							113	48.8	267	7.3
EH	Early	High > F 26	1993	92	50.5	248							
			1996	91	52.1	264	24	53.8	74	67	51.3	190	
			2005							65	57.7	240	6.4
IL	Intermediate	Low < F 24	1993	117	42.8	176	23	41.5	33	94	43.0	144	
			2000	94	44.9	159	47	44.6	76	47	45.1	83	
			2005							47	49.0	98	2.5
IH	Intermediate	High > F 26	1992	110	47.5	239	20	48.1	45	90	47.2	193	
			2002	90	50.8	234	43	52.1	116	47	50.4	118	
			2005							47	53.3	139	5.3
LL	Late	Low < F 24	1993	90	42.8	135	43	44.8	72	47	40.9	63	
			2000	47	45.1	73	47	45.1	73	-	-	-	1.3 ¹
LH	Late	High > F 26	1992	82	55.4	282	29	56.9	106	53	54.4	176	
			1997	53	55.6	182	27	57.4	107	26	54.2	75	
			2002	26	56.8	84	26	56.8	84	-	-	-	1.7 ¹

¹Stand LL the period 1993-2000, stand LH 1993-2002

²Stand LL 2000, stand LH 2002

Field vegetation

All field vegetation was cut every fourth year from nine sample areas, each was rectangular and measured 0.5 m²; these subplots located systematically in different directions from the seedling measurement subplots (Figure 2). The vegetation was sorted according to species, dried at 70° C for 48 hours then weighed.

Pre-commercial thinnings

As a part of normal silvicultural practice, pre-commercial thinnings were conducted at the same time as the shelter-wood thinnings. The regeneration was tended mainly by cutting wolf-trees (low-quality trees, mainly with forks, spike-knots and thick branches, dominating and suppressing adjacent trees) and undesired species, such as hornbeam (*Carpinus betulus*) and birch (*Betula* spp.).

Potential quality of the new stand

In autumn 2006 the quality of all beech trees taller than 3 m was recorded in 12 circular plots (radius 4 m) in each of the two late regeneration stands cut in 2002 (LL and LH). For the dominant and co-dominant beech trees, stems were classified as potential final

crop trees (undamaged trees with good growth and without thick branches, spike-knots or forks), wolf-trees and others. Mean height, suppressed beech stems, other species and the total number of stems were also recorded.

Shelter-wood trees

The diameter at breast height of the shelter trees was measured in 1993, 1996 and 2005, in four circular plots (radius 25 m) in each stand. The plots had the same centre as the sample areas where the new generation was observed. The tree height and height to the first living branch of selected sample trees (15-20 in each plot) were recorded. During cutting operations, the removed shelter trees were measured.

Analysis

The mean seed fall for the most years and stands was calculated and analysed statistically using the Wilcoxon rank test (Wonnacott and Wonnacott 1985). To study differences between the years and stands with respect to the size of the most years, pair-wise comparisons were made and Tukey's test at the 5 % level was used to determine significant differences (Quinn and Keough 2002). Stand

Table 2. Seed fall (seed m⁻²) during the study period. In stands LL and LH the last seed-trees were cut in 2002 and 2000, respectively. Most years are indicated by grey shading. Annual means followed by different letters are significantly different ($P < 0.05$) based on the Wilcoxon rank test

Year	Stand							Mean	
	EL	EM	EH	IL	IH	LL	LH		
1992	327	657	497	285	927	420	578	527	a
1993	410	110	220	60	80	100	80	151	b
1994	0	0.3	0	0	2.4	0	0		
1995	850	900	1150	210	1270	330	740	779	a
1996	0	0	0	0	0	0	0		
1997	0	0	0	0	0	0	0		
1998	126	175	129	38	118	21	46	93	b
1999	0	0	0	0	0	1.5	0		
2000	230	359	488	178	490	75	80	271	ab
2001	0	0	0	0	0.9	0	0		
2002	690	810	440	150	750	-	-	568	a
2003	0	0	0	0	0	-	-		
2004	50	130	130	10	120	-	-	88	b
2005	0.3	0	0	0	1.0	-	-		
2006	1042	923	819	74	860			744	a
Mean	466	508	484	126	577	189	305		

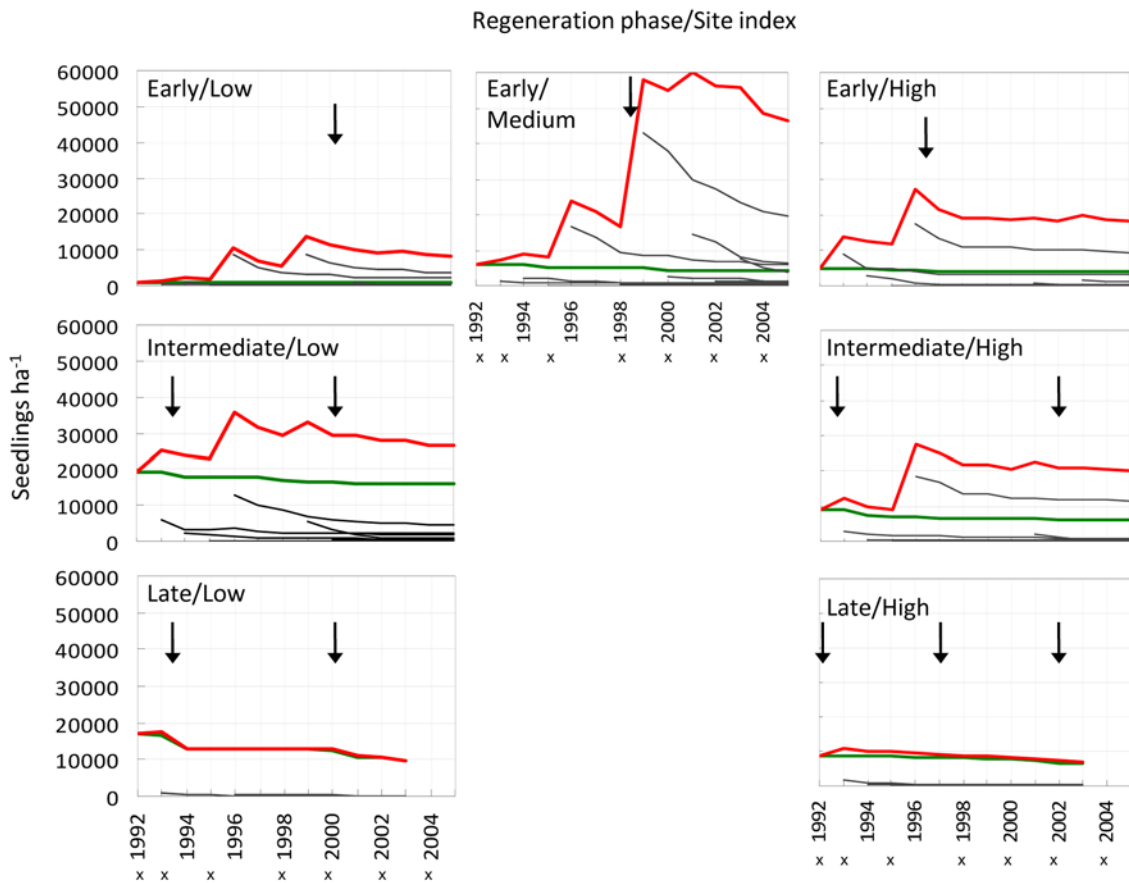


Figure 3. Change in number of seedlings in the early regeneration phase (stand EL, EM and EH), the intermediate regeneration phase (stand IL and IH), and the late regeneration phase (stand LL and LH). Red line shows the total number of seedlings, green line the number of seedlings established before the observation period and black lines the number of seedlings of every new cohort. An “x” indicates a mast year and an arrow a cutting in the shelter.

Table 3. Seedling/seed ratio, i.e. percent of new seedlings ha⁻¹ originating from the previous mast year divided by the number of fallen seeds ha⁻¹. In stands LL and LH the last seed-trees were cut in 2002 and 2000, respectively

Stand	Year						
	1993	1994	1996	1999	2001	2003	2005
EL	0.017	0.020	0.102	0.705	0.036	0.004	0
EM	0.017	0.210	0.186	2.444	0.402	0.103	0.124
EH	0.179	0.126	0.153	0	0.017	0.040	0
IL	0.205	0.377	0.606	1.462	0.125	0.057	0
IH	0.033	0.070	0.147	0	0.045	0.008	0
LL	0.020	0	0.011	0	0		
LH	0.034	0.072	0.004	0	0		
Average	0.07	0.12	0.17	0.66	0.09	0.04	0.02

parameters for the shelter stands were calculated according to the standard routines for long term forest growth and yield experiments in Sweden (Karlsson 1998).

Results

Seed fall

Seven mast years occurred during the 14-years study period. Two consecutive mast years, 1992 and 1993, occurred (Table 2). Smaller quantities of seed were produced between mast years. There were no significant differences in the amount of seed produced between stands, site index classes or regeneration phases, despite the fact that there were fewer seed-trees in the later regeneration phases.

Seedlings

New seedlings were established after mast years in the early and intermediate phases but not in the late phase where a tendency to a slow reduction in number of seedlings could be noticed (Figure 3, Table 3). The number of seedlings observed the first autumn after seedling establishment decreased due

to high mortality during the following years. Only small changes in the numbers of advance seedlings occurred during the observation period (Figure 3).

In stand EH there were an increased number of seedlings following the mast years in 1992 and 1995 (combined with a cutting in the shelter stand). After five years, the number of seedlings stabilised at a frequency of 15 000-20 000 seedlings ha⁻¹ (Figure 4).

Sub-plots without seedlings tended to be colonised more frequently during the early regeneration phase than the later phases (Figure 5 and 6). After five to seven years after the stand was first opened-up, colonisation by new seedlings was low. A similar pattern was observed for stands in the intermediate regeneration phase. Almost no colonisation by new seedlings was observed in the two stands in the late phase.

There was no recorded relationship between site index and colonisation by new seedlings (Figure 5).

Colonisation by new seedlings depends on mast years and conditions for establishment. The ratio between establishment of new seedlings on subplots without and with previous regeneration decreased over the observation period (Figure 6).

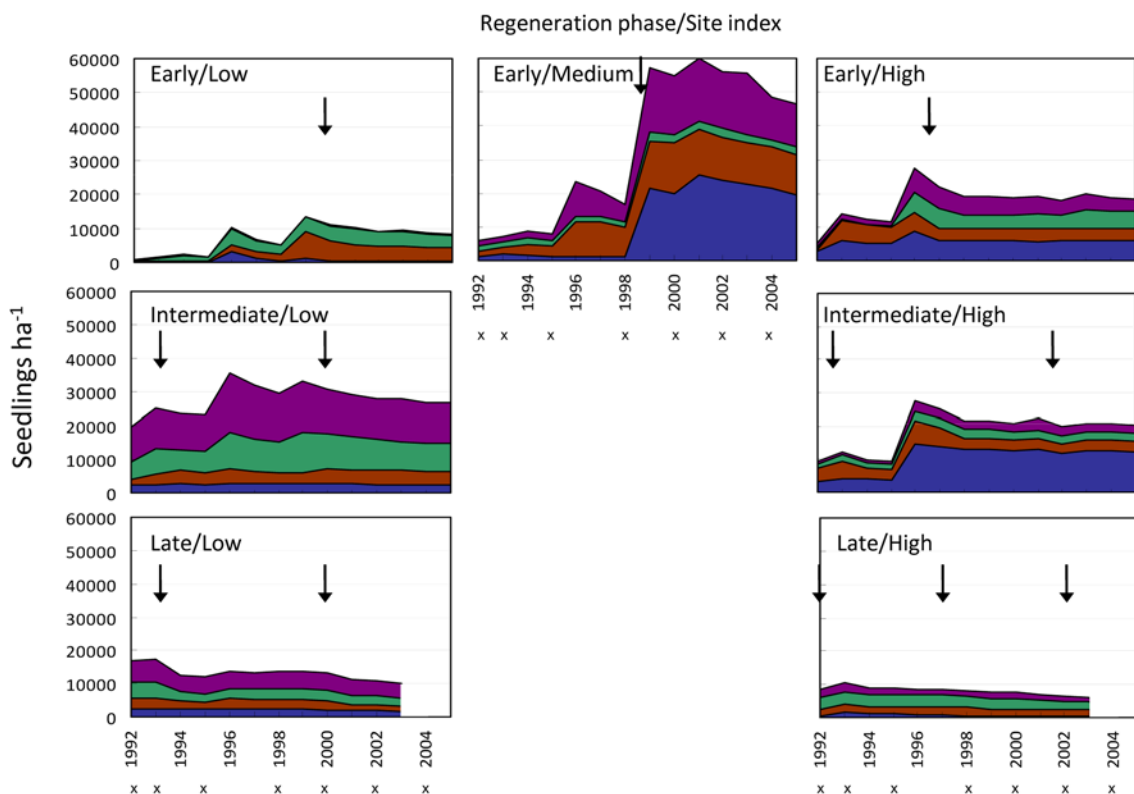


Figure 4. Change in number of seedlings in the seven stands. The diagrams show the total number of seedlings and how these are distributed in the four sample areas. An "x" indicates a mast year and an arrow a cutting in the shelter.

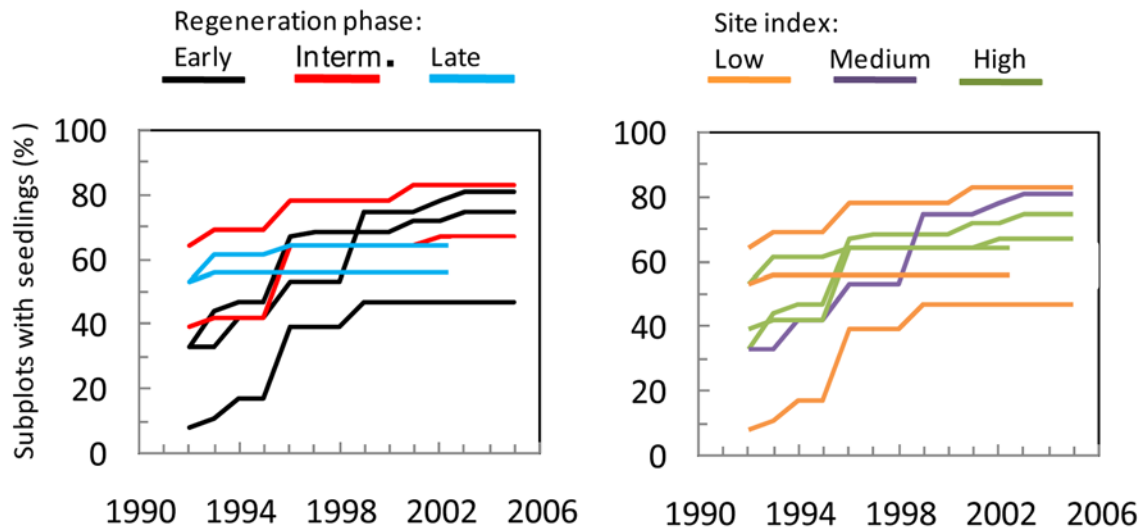


Figure 5. Accumulated frequency of subplots with seedlings established during 1993-2005. On the left graph the colours signify the regeneration phase when the observations started: black – early phase, red – intermediate phase and blue - late phase. On the right graph orange signifies low site index, blue medium site index and green high site index.

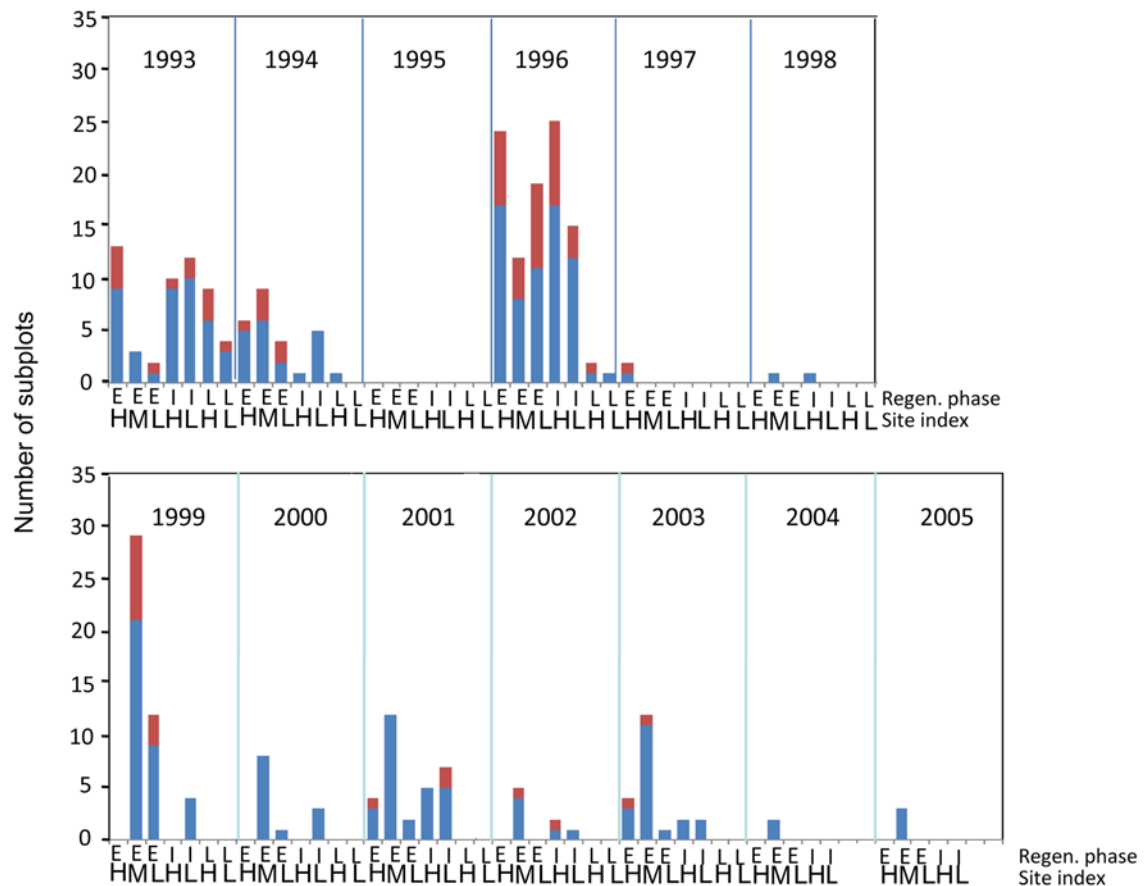


Figure 6. Number of subplots (out of a total of 36) with new seedlings established during the period 1993-2005 for stand EL, EM, EH, IL and IH and during 1993-2003 for stand LL and LH. Blue bars indicate subplots with previous regeneration and red bars indicate subplots without previous regeneration.

Table 4. Seedlings of species other than beech ha⁻¹ in three height classes in autumn 2005 (stands EL, EM, EH, IL and IH) and autumn 2003 (stands LL and LH)

Species	Height m	Stand no						
		EL	EM	EH	IL	IH	LL	LH
Beech (<i>Fagus sylvatica</i>)	<1 m	7 800	41 400	10 800	8 600	13 100	100	600
	1-2 m	600	600	3 600	2 200	1 100	0	0
	>2 m	0	4 400	3 900	15 800	6 100	9 700	6 400
Sum		8 400	46 400	18 300	26 600	20 300	9 80	7 000
Other species								
Alder (<i>Alnus incana</i>)	<1 m		300					
Ash (<i>Fraxinus excelsior</i>)	<1 m							800
	1-2 m							800
	>2 m							600
Birch (<i>Betula sp.</i>)	<1 m				1 400		800	300
	1-2 m				2 200			300
	>2 m							300
Hornbeam (<i>Carpinus betula</i>)	<1 m		800	300				300
	1-2 m					1 400		300
	>2 m					300		
Oak (<i>Quercus sp.</i>)	<1 m		300	300	600	300		
Pine (<i>Pinus sylvestris</i>)	<1 m		300		6 900		2 800	
	1-2 m						1 100	
Rowan (<i>Sorbus aucuparia</i>)	<1 m			300				
Spruce (<i>Picea abies</i>)	<1 m			300			600	
	1-2 m		300					300
	>2 m						600	
Sum		0	2 000	1 200	11 100	2 000	5 900	4 000

The proportion of subplots with no seedling did not appear to be related to regeneration phase or site fertility (Figure 5). Also for subplots with only beech seedlings, subplots with only other species and rate of admixture no relation with regeneration phase or site fertility was found.

Seedling/seed ratio

There was a high variation in the seedling/seed ratio, between both years and stands (Table 3). On average for the stands in the early and intermediate phases the seedling/seed ratio was 0.2 %. The ratio for the late phase stands was only 0.01 %. The highest seedling/seed ratio during the study period was 2.4 %, recorded during the autumn of 1999 in the early regeneration phase stand of medium site index, stand EM. In stand EH no new seedlings were found during this year,

although the seed-fall was 1.3 million seeds ha⁻¹ anterior autumn. When comparing all years, 1999 had the highest seedling/seed ratio with an average for the seven stands of 0.66 %.

Seedlings of species other than beech

The species and numbers of tree saplings and seedlings other than beech in autumn 2005 (stands EL, EM, EH, IL and IH), and autumn 2003 (stands LL and LH), were more frequent on subplots where no or very few beech seedlings were established (Table 4, Figure 7). Seedlings of other tree species were few and small in the early regeneration-phase stands and became more frequent and taller in the intermediate and late phases. The pattern of distribution varied between species and stands: in stands IL, IH and LH all hornbeam, birch and ash were found in one

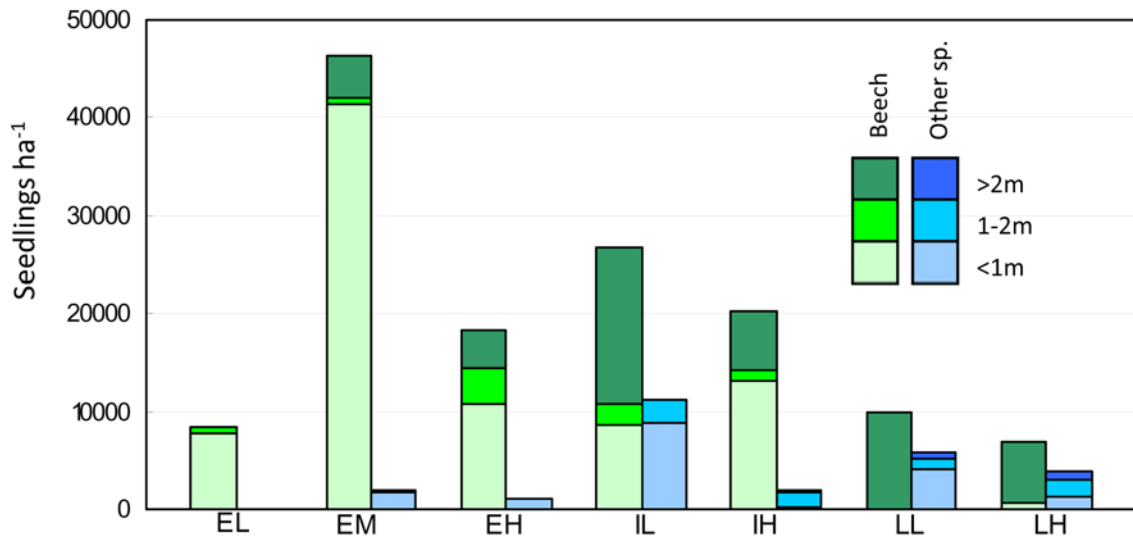


Figure 7. Number of seedlings ha^{-1} in different height classes in 2003 (stands LL and LH) and 2005 (stands EL, EM, EH, IL and IH). Greene bars show the average number of beech seedlings for each stand and blue bars show the number of seedlings of other species in the three height classes.

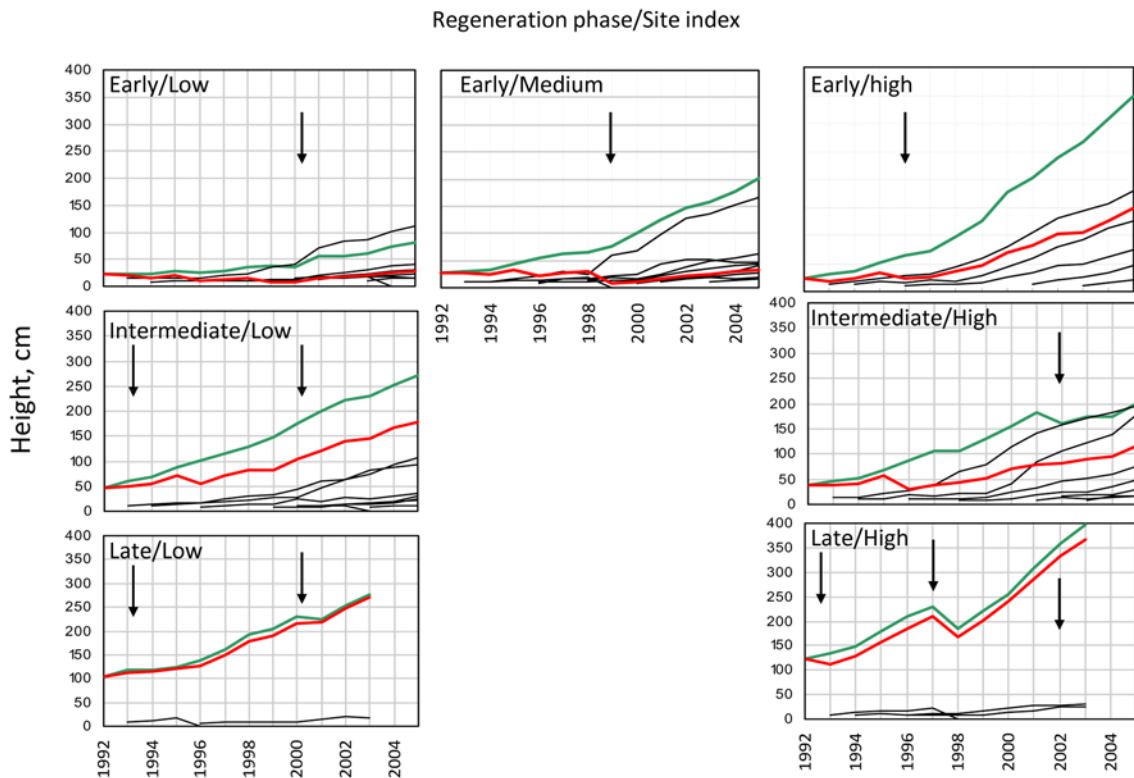


Figure 8. Height development of beech seedlings and saplings in the seven stands. The red lines indicate the mean height, the green lines the height of the seedlings established before 1993, and the black lines the height development of every new cohort. In stand LL and LH no measurements were made after 2003, since the regeneration periods were ended in these stands. An arrow indicates a cutting in the shelter.

Table 5. Numbers, proportion and height of stems of the new generation in stand LL and LH divided into different categories, autumn 2006. All trees above 3 m were examined.

Stand	Dominant and co-dominant beech stems								Suppressed beech stems	Other species	
	Potential final crop trees		Other		“Wolf trees”		Total		Average height	no/ha	no/ha
	no/ha	%	no/ha		no/ha	%	no/ha	%	dm		
LL	398	29	1310	73	66	4	1774	100	75	2437	1409
LH	796	42	995	53	83	4	1873	100	90	2106	381

single sampling area in each stand, while the pine in the intermediate and late regeneration phase stands of low site index, stands IL and LL, were spread across all four sampling areas. Species like ash (*Fraxinus excelsior*), hornbeam (*Carpinus betula*), oak (*Quercus* sp.), Scots pine (*Pinus sylvestris*) and rowan (*Sorbus aucuparia*) were unable to attain their growth potential as a result of browsing and pre-commercial thinning. For both pine and spruce there was abundant germination followed by high mortality.

Height and height growth

Seedlings established before the investigation started grew faster than newly established seedlings. The latter increased their height growth after two years (Figure 8). Mean seedling height for stand EH was 1.5 m in autumn 2005, while seedlings in the two other stands in the early regeneration phase did not attain a height of 50 cm. In the intermediate phase stands, the mean seedling height was between 1 and 2 m, and in the late phase between 2.5 and 4 m at the end of the observation period.

Influence of shelter-wood density

The average height growth of beech seedlings established at the start of the observation period was negatively correlated with the density of shelter expressed as the number of trees per hectare (Figure 9). However, the variation between individual years and stands was high and the correlation was low ($R^2 = 0.18$).

Quality – potential crop trees and wolf trees

The two stands in the late regeneration phase (stands LL and LH) contained 796 and 398 potential final crop trees ha⁻¹ respectively (Table 5). The proportion of wolf trees was low, about 4 % in each stand.

Field vegetation

Stands IL and LL contained a high biomass of field vegetation (measured as dry mass) mainly consisting of *Vaccinium myrtillus* and *Rubus idaeus* (Figure 10). Other common field layer species were *Deschampsia flexuosa* and *Oxalis acetosella*.

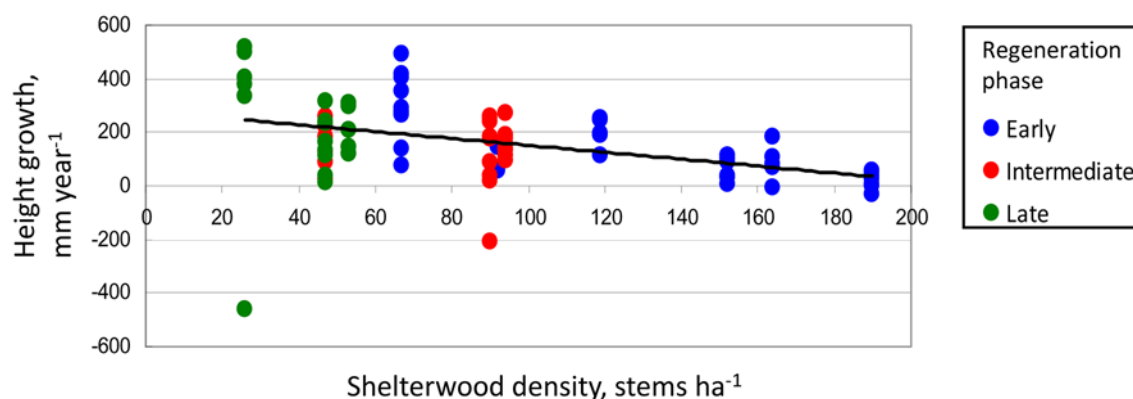


Figure 9. The annual average height growth of beech seedlings established before 1993 in shelter-wood stands of different densities. Negative observations are due to damage or removal of fast growing seedlings during pre-commercial thinning.

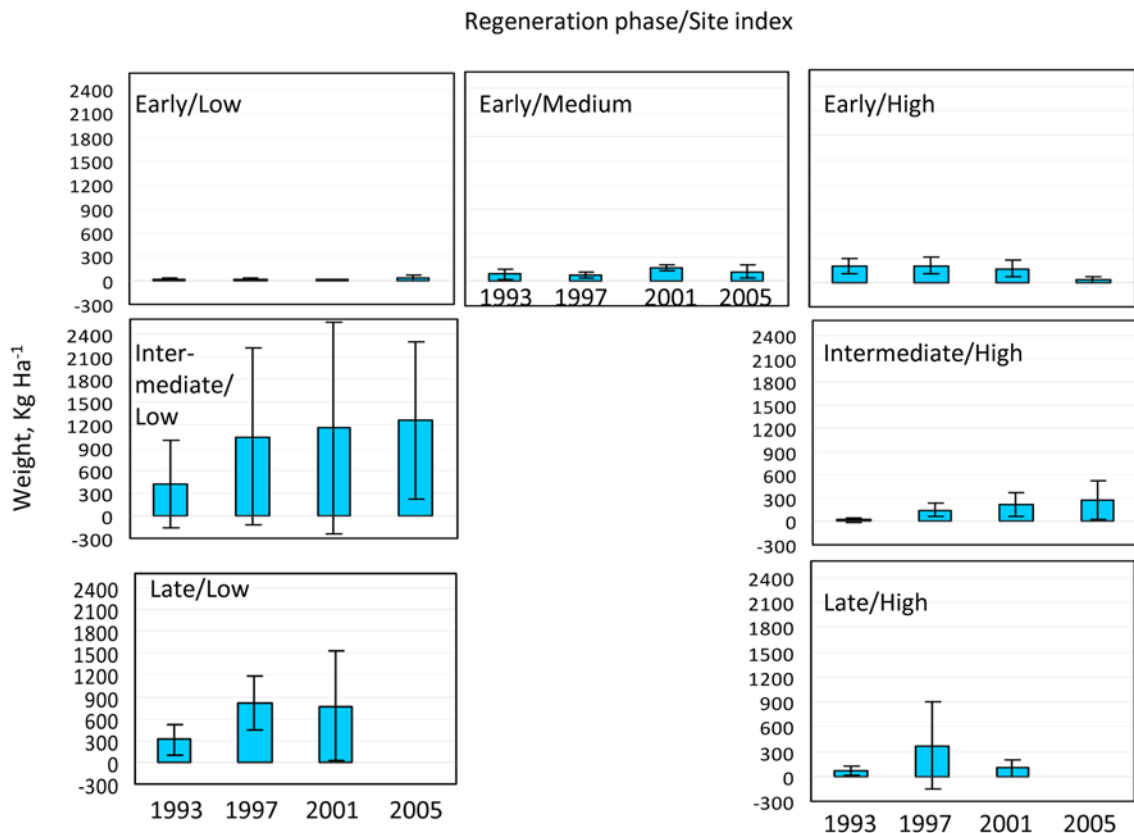


Figure 10. Dry weight of field vegetation in the seven stands harvested every fourth year. In stand LL and LH no harvest was done 2005, since the last shelter-trees were cut in 2000 and 2002 respectively. Standard error indicated by bars.

Shelter

The density of shelter varied between 92 and 190 stems ha⁻¹ at the start of the experiment with no clear differences between stands in different regeneration phases or site index classes (Table 1). Removal of stems and volume during cuttings and final harvest over the course of the experimental period was regulated by the establishment and early growth of the new seedlings, and did not follow any clear pattern related to regeneration phase or site index. Volume growth of the shelter-wood stands was lower in the intermediate and late regeneration phases than in the early phase. Compared to the expected volume growth of beech stands (Carbonnier 1971) of corresponding ages, the volume growth of inter-mediate and late regeneration phases was surprisingly low.

Discussion

Seed-fall

The conditions for natural regeneration were favourable during the period investigated, including

seven mast years. This frequency was higher than recorded previously (Övergaard et al. 2007). Mast years occurred in both 1992 and 1993. This contradicts the widely held opinion that the seed production is very small the year following an abundant mast year. Small amounts of seeds also resulted in new seedlings between the mast years (Figure 3 and 6). The differences in the quantity of seed produced in different mast years were probably due to variations in the weather: a warm summer favours the initiation of flower buds (Schmidt 2006), and spring frost reduces the number of flowers (Matthews 1955).

The number of seed-trees decreased in all stands over the observation period, but this did not seem to influence seed production. After a cutting, the crown size will increase as well as the exposure to solar radiation: this encourages seed production. It has also been shown that seed production is higher in open compared to more closed canopy layers (Dzwonko 1990). The low site index stand in the intermediate regeneration phase, stand IL, produced

relatively few seeds. This may be explained by the high proportion of shelter-trees of other species.

Seed-fall before the study period

Seed-fall was not recorded before the study started. However, since 1974 mast years occurred at intervals of one to three years with the exception of a seven-year interval between 1976 and 1983 (Övergaard et al. 2007). The two late regeneration-phase stands may have been affected by this long interval: fewer seedlings would have been produced and field vegetation would have increased, thus adversely affecting seed germination from later mast years.

Important factors affecting the number of seedlings

Water and light are key requirements for seed germination and early seedling growth. A well-balanced shelter density regulates light, water and nutrients for new seedlings to grow, but adversely affects the growth of competing field vegetation. The shelter also provides protection against frost damage. A reduction in light and nutrients by the sheltering trees is also considered to favour new regeneration of high quality (Bjerregaard and Carbonnier 1979). Decreased incoming solar radiation adversely affects germination (Olesen and Madsen 2008). Low soil temperature reduce the decomposition of litter, and a thick humus layer is unfavorable since the nuts and initial roots will suffer from desiccation and/or frost damage (Watt 1923, Bressen 1998).

The 1995 mast year resulted in abundant establishment of new seedlings in the early and intermediate regeneration-phase stands (Figure 3). One explanation is that 1995, with a mean fall of 7.8 million seeds ha^{-1} (Table 2), was followed by favourable weather conditions the next spring, at the time of germination and establishment. The precipitation in May 1996 was 132 mm, compared with a mean for this month of 45 mm (SMHI, 2006).

During a mast year the number of seeds did not seem to be a limiting factor controlling the number of new seedlings (Table 2). Other important factors could be the site conditions, for example the humus layer and the amount of vegetation, together with the shelter stand density, and the weather during the year of germination.

Number of seedlings

The number of seedlings varied greatly during the

early regeneration-phase, and moderate during the intermediate, but there was almost no variability during the late phase (Figure 3). This was probably because there was little competition early in the regeneration period and after the shelter stands had been cut. With limited competition from other plants and shelter trees, a large number of seedlings were able to establish after the mast years. The E-stands had so far had few new seedlings and possibly a relative high proportion of area easy to regenerate. This may also be the explanation to the fewer seedlings established in the I- and L-phase stands; the best areas for seedling establishment were already occupied.

The germination in 1996 was successful in the early and intermediate regeneration phase stands, stand EL, EM, EH, IL and IH, resulting in many surviving seedlings. The number of seeds was the highest of the entire study period with an average of almost 8 million seeds ha^{-1} , followed by favorable conditions for germination and early growth in spring 1996.

The early regeneration-phase stands

In the early regeneration-phase stand of low site index, stand EL, only a few seedlings established during the study period. This may be explained by the high number of stems left in the shelter stand (Table 1). It is recommended that areas with low site indices should have few shelter trees and a low basal area (about $15 \text{ m}^2 \text{ ha}^{-1}$) (Bjerregaard and Carbonnier 1979). In 2005 the basal area in stand EL was $22 \text{ m}^2 \text{ ha}^{-1}$. A large number of stems is known to decrease seed production (Dzwonko 1990), and EL had the highest number of stems of all the stands investigated. However, seed production was not suppressed (Table 2). Low light levels and a thick leaf-litter layer together with low soil temperatures are possible explanations for the low germination rate (Harley 1939, Bourne 1945, Madsen and Larsen 1997). The establishment of other woody species and field vegetation was also low (Table 4, Figure 10). Opening up the stand in 2000 did not increase the number of new seedlings, but probably benefited the survival of seedlings originating from the 1998 mast year. At the end of the study period, stand EL was still considered to be in the early regeneration-phase.

Both stand EM and EH exhibited a significant increase in the number of seedlings present. When the investigation started, both stands contained fewer shelter trees than stand EL (Figure 3, Table 1). In stand EM almost 43 000 new seedlings ha^{-1} were

established following the cutting after the seed-fall 1998, but by 2005 only 20 000 of these remained. The mast years 1995 and 2000 contributed to increased seedling numbers and by the end of the period the stand contained about 47 000 seedling ha⁻¹. In stand EH a cutting was undertaken after the 1995 mast year, producing favourable conditions for the roughly 18 000 new seedlings ha⁻¹ established. This number was reduced during the following years, but together with earlier cohorts, the total number of seedlings ha⁻¹ remained at the same level. The fact that no new seedlings was found in stand EH after the abundant seed-fall 1999, when stand EM received 43 000 seedlings ha⁻¹, is remarkable (Figure 3). The number of shelter-trees was quite low, 68 stems ha⁻¹ compared to 119 in stand EM. The mean height of the new regeneration was about 50 cm in stand EH compared to about 10 cm in stand EM, but in stand EH about 7 000 seedlings, 4 000 advance regeneration and 3 000 emerged 1993, had a mean height of about 120 cm and 65 cm respectively (Figure 8). The remaining seedlings, originating from the mast year 1995, had a mean height of about 20 cm. The explanation that the competition for light from the 20 000 seedlings ha⁻¹ prevented germination is not satisfying since seedlings were established both in 2001 and 2003, even if those were in small numbers.

At the end of the study period, stand EM was in the intermediate regeneration-phase, while stand EH had reached the late phase.

The intermediate regeneration-phase stands

Cuttings in the intermediate regeneration-phase stands IL and IH in 1993 and 1992 provided good opportunities for new seedlings to establish after the mast year in 1995 (Figure 3). After this, few new seedlings appeared. Cuttings in 2000 and 2002 did not influence the number of new seedlings, but the height growth of earlier established seedlings increased (Figure 3 and 8). The seedlings in stand IL grew relatively slowly as a result of competition with the abundant older seedlings and other field vegetation (Figure 8 and 10).

The late regeneration-phase stands

In the late regeneration-phase stands (LL and LH) almost no new seedlings appeared, probably due to competition from older ones and from established field vegetation. In stand LL a decrease in the number of seedlings was observed after a cutting in 1993; this was the result of both damage caused by

harvesting the trees and the removal of wolf-trees in the new seedling generation.

Seedling distribution

The early regeneration phase stands initially had an uneven seedling distribution, with regeneration in only small areas (Figure 4, 5 and 6). Following mast years and cutting the shelter wood, a higher proportion of the area was colonized. The importance of the 1995 mast year is clear. Site index did not seem to influence seedling establishment. Some of the subplots were never colonized; new seedlings mostly established in subplots that were already colonized (Figure 6).

The seedling distribution seemed to be very variable between the four plots in some stands, e. g. EM and IL (Figure 4), but the numbers of seedlings ha⁻¹ was sufficient in all sampling areas, and the numbers will probably increase in the future. More problematic is the situation in stand LH, which has only 2 200 seedlings ha⁻¹ in one of the sampling areas. No other woody species were recorded in this sampling area (Table 4) but there was a large field vegetation biomass (Figure 10), which consisted mainly of different grasses that probably inhibited the germination and development of new seedlings.

Uneven seedling distribution is one of the disadvantages associated with the natural regeneration of beech (Bornebusch 1947, Huss 1972) and is generally expected to be more obvious as a result of the method described here than the more intensive approach, where site preparation facilitates germination and establishment. At the end of the investigation 38 % of the subplots contained no seedlings. In an experiment at Skarhults experimental forest, situated in the central parts of Scania, natural regeneration of beech by using the traditional method including scarification was studied, the frequency of subplots without beech seedlings was recorded six years after the regeneration event. Under a sparse shelter with 54 stems ha⁻¹ and a basal area of 15 m² ha⁻¹, 35 % of the subplots on scarified ground and 65 % of those on undisturbed ground contained no seedlings. Under a dense shelter with 106 stems ha⁻¹ and a basal area of 23 m² ha⁻¹ the equivalent numbers were 35 % and 75 % respectively (Agestam et al. 2003). This indicates that a more even seedling distribution was achieved using the method described herein; this is the result of good soil conditions produced by carefully controlled cutting of the stands. Using the traditional regeneration

method, seedlings were concentrated in the scarified areas, where they were often abundant, while there was poor regeneration in the unscarified areas.

Advance regeneration

Seedlings established before the study commenced had a mean survival of 76 % over the investigation period. They were well established and had a higher mean height compared to later cohorts, thus suffered less from competition (Figure 3 and 8). Of the seedlings originating from the 1992 mast year, 36 % were still alive in the autumn of 2005. However, these survival rates were also affected by a pre-commercial thinning and by damage caused by felling and the removal of timber from the plots.

A comparison with the traditional approach

Independent of regeneration method the goal is most often to get seedlings enough to establish a new stand of good quality. How many germinates that is needed differ between sites and the conditions of the area. After germination browsing is often the most severe damage and an abundant e.g. roe deer population calls for a high number of seedlings, and if the regeneration area is not fenced a more intense site preparation is needed. In areas where no specific calamities and high survival are expected it may be enough with a slight rotary cultivation. Some authors claim that the minimum acceptable number of seedlings at the end of the first growing season should be 200 000 ha⁻¹. This is considered sufficient to form a stand capable of producing high quality wood (Bonnemann and Burschel 1967, Huss et al. 1972). The high numbers of seedlings are expected to be reduced to about 20 000 ha⁻¹ before they reach a mean height of one meter (Huss and Burschel 1972).

In the study stands, the total number of seedlings never exceeded 60 000 ha⁻¹ (Figure 3), but these were supplemented by new seedlings after every mast year. At a mean height of one meter, the numbers of seedlings ha⁻¹ in stands EH, IL, IH and LL were about 18 000, 30 000, 20 000 and 17 000 (Figure 3 and 8).

In the traditional method, when it is time to regenerate, heavy cuttings are performed at mast years when the timber prices are acceptable. This may give large stocks to the industries, especially if the mast year interval has been long, and cause a fall in timber prices. In the here described method cuttings to promote regeneration and seedling growth can be done at any time when the timber prices are good, independent of mast years.

Seedling/seed ratio

The seedling/seed ratio was higher in the early and intermediate regeneration phase stands (0.2 %) than in the late regeneration phase stands (0.01 %). The variation indicated that competition had an influence on the germination and survival of new seedlings. The highest ratio, 2.4 %, was found for site EM in 1999. This can be explained by the heavy seed-fall in autumn 1998 followed by a cutting in the shelter-wood the following winter. The cutting and logging probably caused a light type of site preparation protecting the seeds and together with increased sun radiation and decreased competition germination was improved. The average ratio for the early and intermediate regeneration-phase stands for all years was 0.2 %. In another study of natural regeneration of beech in southern Sweden, the ratio was estimated to be 0.8 % without and 5.8 % with site preparation (Agestam et al. 2003). Site index class had no effect on this ratio.

Height and height growth

A slower height growth was recorded for beech seedlings in denser shelter wood stands in the early regeneration phase (Figure 8 and 9). Height growth was more rapid in the more widely spaced shelter-wood stands of the intermediate and late regeneration phases. Site index had no effect on beech seedling height growth. For some individual observations, a negative height growth was observed as a result of damage to seedlings and the removal of fast growing seedlings during pre-commercial thinning.

Increasing the shelter-wood density has also been shown to have a negative impact on beech seedling height growth under the traditional regeneration regime (Agestam et al. 2003). Height growth of sheltered seedlings was found to be a complex result of intercepted light, water stress, ground vegetation competition and other growth limiting factors. It was not possible to determine the contribution of the different growth factors in this study. The timing and intensity of cutting and the removal of shelter-wood trees is a complicated problem involving conflicting factors, and requires further experimental investigation.

Height growth of younger seedlings was gradually hampered by older seedlings and saplings as these grew taller. Consequently, the effect was more pronounced at the end of the intermediate phase and during the late regeneration-phase (Figure 8).

Initial stem quality

It is, of course, difficult at this early stage, based on the current regeneration results, to judge the likelihood of creating high quality stands. However, the proportion of wolf trees was low; about 4 % in the two stands with the most advance regeneration. A much higher proportion of the stems were classified as potential crop trees in stand LH compared to stand LL (Table 5). This might be the result of better height development: the average height was about 1.5 m greater in stand LH than in stand LL. Tree quality may also be dependent on site quality.

Length of the regeneration period

There were longer regeneration periods for the stands with low site indices. In stand EL this could, however, be explained by the high numbers of shelter trees resulting in increased competition for light, water and nutrients. The low levels of solar radiation reaching the ground results in low soil temperatures and adversely affect mineralization; in addition, a thick leaf-litter layer impedes the germination and establishment of new seedlings (Watt 1923). The stand remained in the early regeneration phase at the end of the study period. A more open shelter-wood may have improved the regeneration result, but data do not exist to confirm this.

Other species

The abundance of other tree species is dependant on the distance to seed-sources and the dispersal capacity of the seeds (Karlsson 2001). Many of the stands had shelter-trees of other species within or close to the investigated stands.

In stand IL in 2005, 60 % of the shelter-trees were beeches, 35 % Scots pines and 5 % oaks. The high proportion of Scots pine explains the high numbers of pine seedlings in the stand; the large numbers of birch seedlings originated from more distant seed sources (Table 4).

Conclusions

- Seed production was not influenced by site index, regeneration-phase or number of seed trees per hectare.
- The number of seedlings decreased with increasing regeneration time. Following mast years, new seedlings established in early but not in late regeneration phases. There was no

tendency that site index influenced the colonisation of seedlings.

- A larger proportion of seeds produced seedlings in the early regeneration period than in the later phase; site fertility had no effect on this.
- Seedling height growth was negatively affected by increasing shelter-wood stand density, but unaffected by site fertility.
- Cuttings in the shelter-woods were determined when the economic outcome was profitable and were done to promote establishment and early growth of new seedlings, and did not follow any specific pattern related to regeneration phase or site index.
- Without using site preparation, the studied method resulted in adequate new beech regeneration following cautious light-regulating cuttings of the shelter stands, irrespective of site fertility and the timing of mast years.

References

- Agestam, E., Ekö, P.M., Nilsson, U. and Welander, N.T. 2003. The effects of shelterwood density and site preparation on natural regeneration of *Fagus sylvatica* in southern Sweden. *Forest Ecology and management* 176(1/3): 61-73.
- Almgren, G., Ingelög, T., Ehnström, B. and Mörtznäs, A. 1984. Broadleaved forests – ecology and management. Skogsstyrelsens förlag, Jönköping, Sweden, 136 p. (In Swedish).
- Bjerregaard, J. and Carbonnier, C. 1979. Beech silviculture. *Sveriges skogsvårdsförbunds tidskrift*, 3, 67 p. (In Swedish).
- Bonnemann, A. and Burschel, P. 1967. The influence of soil cultivation on the establishment of natural regeneration of Beech. *Forstarchiv* 38(2): 37-44 (In German).
- Bornebuch, C. H. 1947. The management of the beech forests at Boller forest district The Danish Forest Experiment Station. 19:1. pp 1-80 (In Danish with French summary).
- Bourne, R. 1945. Neglect of natural regeneration. *Forestry* 19. 33-40 1945.
- Bressem, U. 1998. Promotion of natural regeneration of beech. *AFZ/Der Wald, Allgemeine Forst Zeitschrift für Waldwirtschaft und Umweltvorsorge* 53(18):933-936. (In German)
- Brown, J. M. B. 1960. Ecological aspects of regeneration in British Beechwoods. *Bull. Inst. Agron. Gembloux (Spec. No.):* 75-92.
- Carbonnier, C. 1971. Yield of Beech in southern Sweden. *Studia Forestalia Suecica*, 91, 89 p. (In Swedish with English summary).
- Collet, C., Lanter, O. and Pardos, M. 2002. Effects of canopy opening on the morphology and anatomy of natural regenerated beech seedlings. *Trees: Structure and Function*

- 16(4/5): 291-298.
- Dengler, A. 1972. Waldbau. Hamburg: Parey, 1971-1972
- Dzwonko, Z. 1990. *Fagus sylvatica*. Nasze drzewa lesne, 10, 1990, p 237-374 (In Polish with English summary).
- Evans, J. 1982. Silviculture of oak and beech in northern France: Observations and current trends. Quarterly Journal of Forestry. LXXVI No 2. 8 p.
- Harley, J. L., 1939. The early growth of beech seedlings under natural and experimental conditions. Journal of ecology 27 1939, p 384-400.
- Harmer, R. 1994. Natural regeneration of broadleaved trees in Britain: Seed production and predation. Forestry (Oxford) 67(4): 275- 286.
- Henriksen, H. A., 1988. The forest and the management. Dansk skovforening. Nyt Nordisk Forlag Arnold Busch. København. 158-159 (In Danish).
- Henriksen, H. A. 1996. Beech regeneration in the forest of Stagsrode. In: Skovgaard, J. P. & Morsing, M. (eds.). Beech regeneration in eastern Jutland. Forskningscentret for skov og landskab. Forskningsserien nr. 13 1996, p 163-210 (In Danish).
- Henriksen, H. A. & Bryndum, H., 1996. Beech regeneration in the forest of Stagsrode. In: Skovgaard, J. P. & Morsing, M. (eds.). Beech regeneration in eastern Jutland. Forskningscentret for skov og landskab. Forskningsserien nr. 13 1996, p 5-162 (In Danish).
- Huss, J. 1972. The development of young growth of Beech from natural regeneration. Der Forst- und Holzwirt 1972 Nr. 27, p 56-58 (In German).
- Huss, J., Kratsch, H. D. and Röhrig, E., 1972. Reports on the results of measures to promote natural regeneration of Beech in 8 forest districts of southern Lower Saxony after the mast year of 1970. Der Forst- und Holzwirt 1972 Nr. 17, p 365-370 (In German).
- Huss, J. and Burschel, P. 1972. Promoting natural regeneration of Beech with various soil cultivation techniques. Results of prolonged observations. Forstarchiv 1972, p 233-239 (In German with English summary).
- Kallstenius, S., 1971. Derivation of height development curves. In: Carbonnier, C. 1971. Yield of Beech in southern Sweden. Studia Forestalia Suecica, 91:69-74 (In Swedish).
- Karlsson, K., 1998. A strategy for reducing the number of sample trees when estimating stand volume on a sample plots. Swedish University of Agricultural Sciences, Department of Forest Yield Research, Report 43, 18 pp.
- Karlsson, M., 2001. Natural regeneration of broadleaved tree species in Southern Sweden - effects of silvicultural treatments and seed dispersal from surrounding stands. Acta Universitatis Agriculturae Sueciae - Silvestria Issue: No.196 Page(s): 44 pp. + Papers I-V Doctoral thesis Published: 2001.
- Kempe, G. and von Segebaden, G., 1990. The Forests. National Atlas of Sweden. LM Maps, Kiruna, Sweden, p 60.
- Lazaruk, L. W., Macdonald, S. E. and Kernaghan, G., 2008. The effect of mechanical site preparation on ectomycorrhizae of planted white spruce seedlings in conifer-dominated boreal mixedwood forest. Can. J. For. Res. 38: 2072-2079.
- Linnard, S., 1987. The fate of beech mast. Quarterly Journal of Forestry 81(1): 37-41.
- Lithner, S. and Jönsson, I., 2002. Abundance of owls and Bramblings *Fringilla montifringilla* in relation to mast seeding in south-eastern Sweden. Ornis Svecica 12:35-45.
- Madsen, P. 1995. Effects of seedbed type on wintering of beech nuts (*Fagus sylvatica*) and deer impact on sprouting seedlings in natural regeneration. Forest Ecology and Management 73 (1995) 37-43.
- Madsen, P. and Larsen, J., 1997. Natural regeneration of beech (*Fagus sylvatica* L.) with respect to canopy density, soil moisture and soil carbon content. Forest Ecology and Management 97 (1997) 95-105.
- Mathews, J.D., 1955. The influence of weather on the frequency of beech mast years in England. *Forestry* 1955 28 (2), (107-16).
- Nielsen, B. O., 1977. Beech seed as an ecosystem compartment. Oikos 29: 268-274.
- Olesen, C. R. and Madsen, P., 2008. The impact of roe deer (*Capreolus capreolus*), seedbed, light and seed fall on natural beech (*Fagus sylvatica*) regeneration. Forest Ecology and Management 255: 3962-3972.
- Quinn, G. P. and Keough, M. J., 2002. Experimental Design and Data Analysis for Biologists. Cambridge University Press, Cambridge, p 199-200.
- Ravn, H. P., Bentsen, N. S. and Theilby F., 2001. Mice gnawing in forest cultures. Skov & Landskab, Skovbrug Videnblade, Kulturpleje 4.12-8 (In Danish).
- Röhrig, E., Bartels, H., Gussone, H.-A. and Ulrich, B., 1978. Investigations on natural regeneration in beech (*Fagus sylvatica*). Forstwissenschaftliches Centralblatt. 97:3, 121-131 (In German with English summary).
- SMHI (Swedish Meteorological and Hydrological Institute). Climatic indications and observations: temperature. <http://www.smhi.se/cmp/jsp/polopoly.jsp?d=10971&l=sv>.
- Schmidt, W., 2006. Temporal variation in beech masting (*Fagus sylvatica* L.) in a limestone beech forest (1981-2004). Allgemeine Forst- und Jagd-Zeitung, 177(1): 9-19 (In German with English summary).
- Watt, A. S. 1923. On the Ecology of British Beechwoods with special Reference to their Regeneration. J. Ecology. 11(1): 1-48 pp.
- Wonnacott, R. and Wonnacott, T. 1985. Introductory statistics, p 472-475. John Wiley & Sons, Inc., New York. ISBN 0-471-82064-4.
- Övergaard, R., Gemmel, P. and Karlsson, M., 2007. Effects of weather conditions on mast year frequency in beech (*Fagus sylvatica* L.) in Sweden. Forestry 2007; 80:555-565.

Acknowledgements

The study was initiated and financially supported by the South Swedish Forest Research Program, SLU. It was also supported by the Royal Swedish Academy of Agriculture and Forestry, and by the Broadleaf Program at SLU. Thanks to N. Å. Gabrielsson for all the help and for contributing to planning the study.

Photo appendix

In all stands photos were taken 1993, 1996, 2002 and 2008 to give an impression of the changes in number, growth and quality of seedlings and saplings, field vegetation and shelter stands. Only five of the stands

are presented here since the late regeneration stands, LH and LL, many times gave an impression of a “green wall”, which made it impossible, on the photos, show some distinctive features that could be recognized all years.

Photo 1-3. Stand EH.





Photo 4-9. Stand EM.







8 Stand EM, July 2002



9 Stand EM, September 2008

Photo 10-12. Stand EL.



10 Stand EL, August 1993



11 Stand EL, October 1996



Photo 13-15. Stand IH.





Photo 16-18. Stand II.





Photo 19. Seed-traps in stand IH (1996).



Photo 20. Inventory frame in stand LH (1993).



Photo 21. Height measurement in stand LL (1993).



Photo by:
E. Agestam photo 1-5, 7, 9-21
P-M Ekö photo 6, 8

Electronic version

© Studia Forestalia Suecica 2009
Edited by J-E. Nylund